

WW-7
8-30-06



West Virginia Department of Environmental Protection
Office of Oil and Gas
WELL LOCATION FORM: GPS

API: 47-039-01825 WELL NO.: 127501 Hardy

FARM NAME: Waller C. Hardy Et al.

RESPONSIBLE PARTY NAME: Alliance Petroleum Corporation, LLC

COUNTY: Kanawha DISTRICT: Loudon

QUADRANGLE: Charleston

SURFACE OWNER: Kanawha State Forest

ROYALTY OWNER: Hardy Oil and Gas LLC

UTM GPS NORTHING: 442,564.78

(878')

UTM GPS EASTING: 4,235,400.94 GPS ELEVATION: 266.86 meters

The Responsible Party named above has chosen to submit GPS coordinates in lieu of preparing a new well location plat for a plugging permit or assigned API number on the above well. The Office of Oil and Gas will not accept GPS coordinates that do not meet the following requirements:

- Datum: NAD 1983, Zone: 17 North, Coordinate Units: meters, Altitude: height above mean sea level (MSL) – meters.
- Accuracy to Datum – 3.05 meters
- Data Collection Method:
Survey grade GPS ____: Post Processed Differential ____

Real-Time Differential ____

Mapping Grade GPS : Post Processed Differential

Real-Time Differential ____

- Letter size copy of the topography map showing the well location.

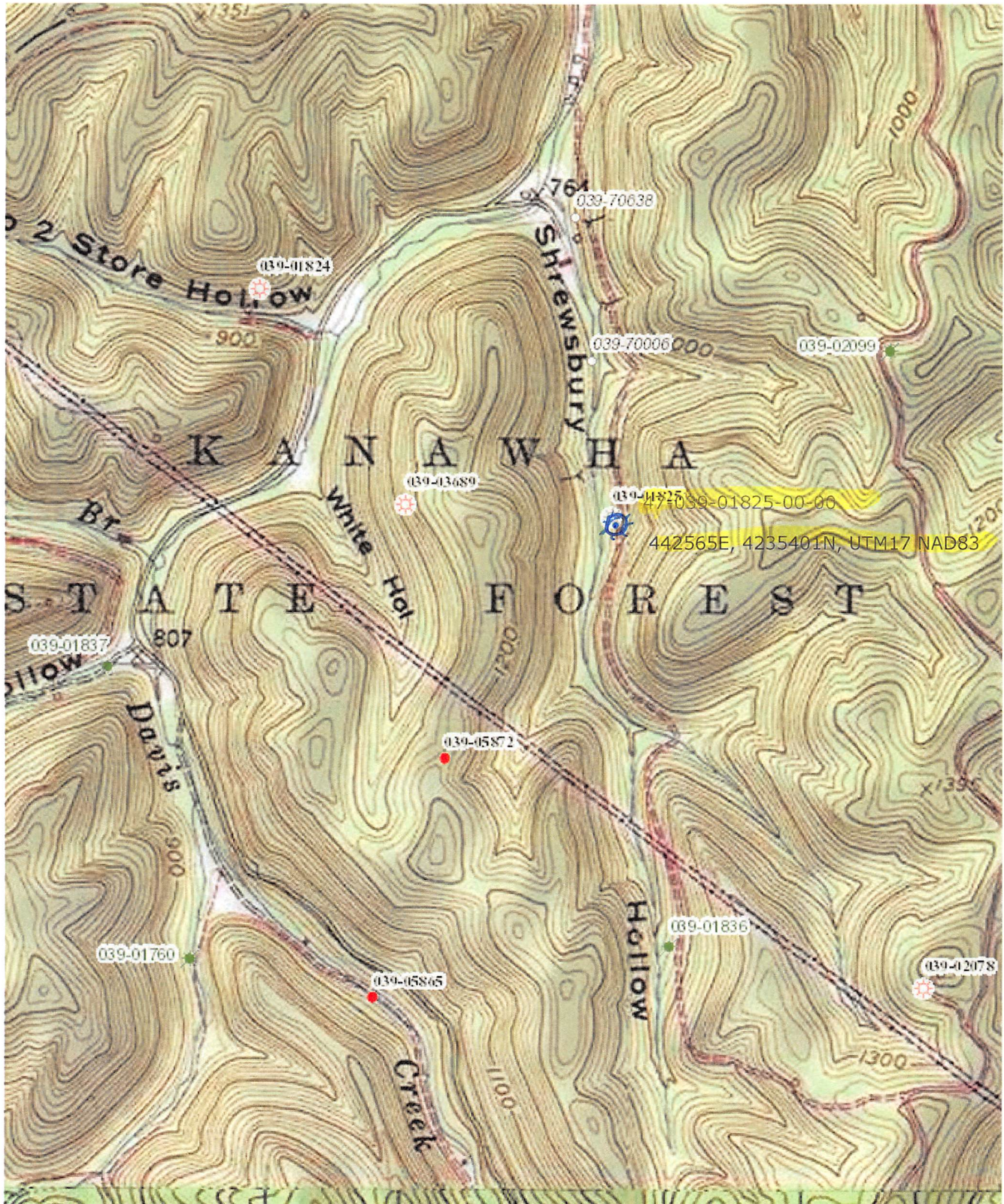
I the undersigned, hereby certify this data is correct to the best of my knowledge and belief and shows all the information required by law and the regulations issued and prescribed by the Office of Oil and Gas.

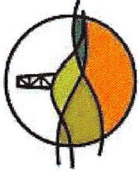
[Signature]
Signature

Engineer III
Title

8-20-19
Date

RECEIVED
Office of Oil and Gas
AUG 27 2019
WV Department of
Environmental Protection





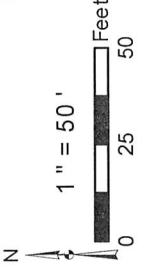
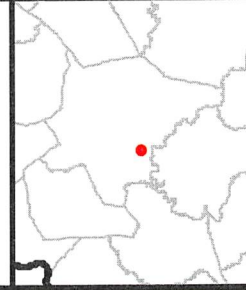
Diversified Gas & Oil Corporation
100 Diversified Way
Pikeville KY, 41051

127501

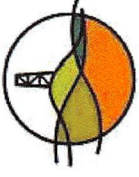
Plugging Map

Legend

- Well
- Sediment Control
- Access Road
- Pits
- Pad



Sources: Esri, DigitalGlobe, GeoEye, Earthstar Geographics, CNES/Airbus DS, USDA, USGS, AeroGRID, IGN, and the GIS User Community



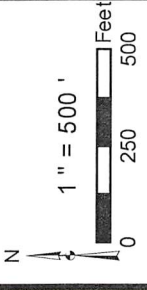
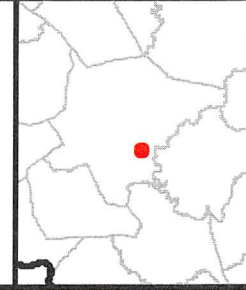
Diversified Gas & Oil Corporation
100 Diversified Way
Pikeville KY, 41051

127501

Plugging Map

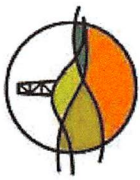
Legend

- Well
- Sediment Control
- Access Road
- Pits
- Pad



Well No.: 127501
 UTM 83-17, Meters
 North: 442564.78
 East: 4235400.94
 Elev.: 266.86

Sources: Esri, DigitalGlobe, GeoEye, Earthstar Geographics, CNES/Airbus DS, USDA, USGS, AeroGRID, IGN, and the GIS User Community





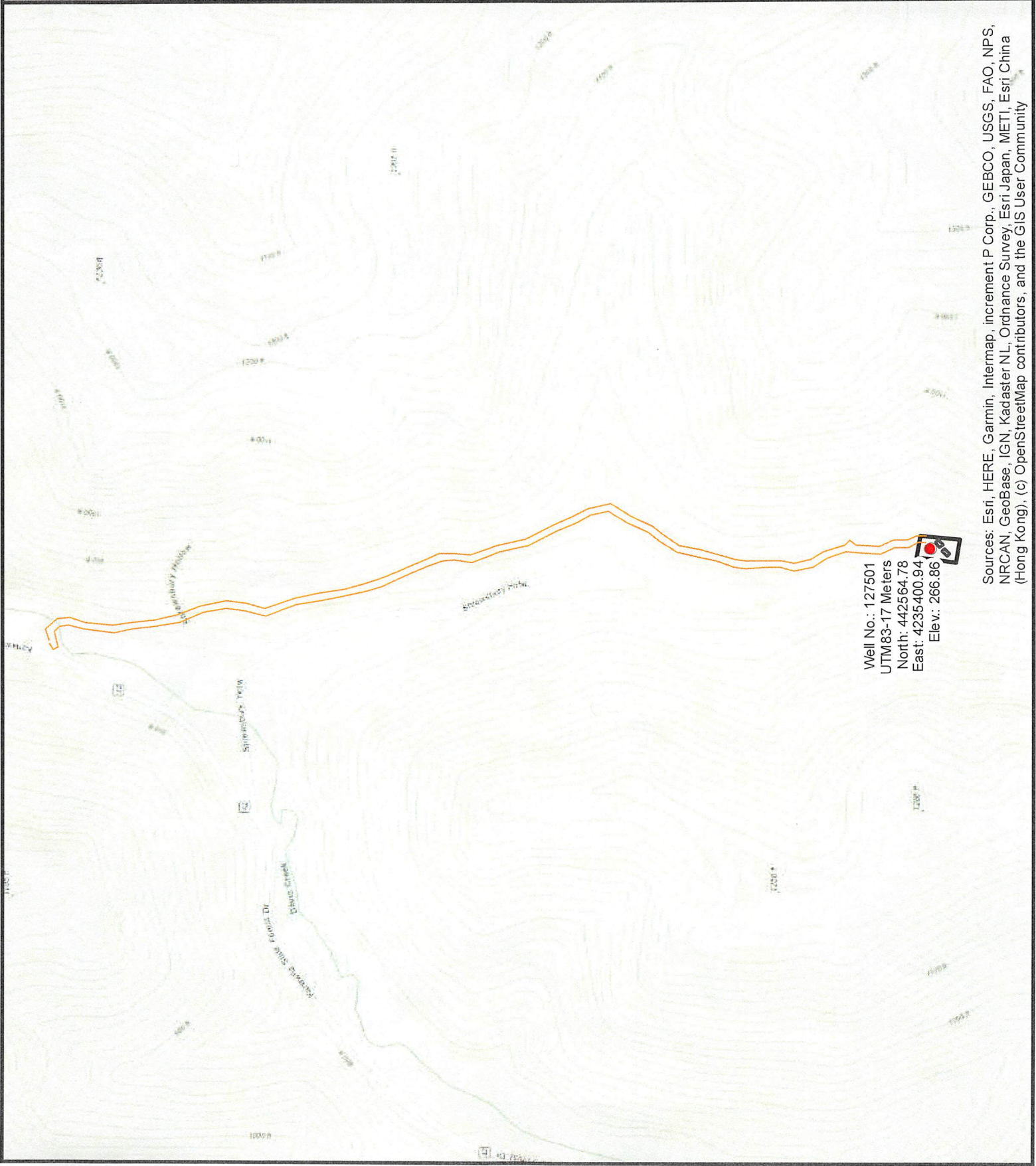
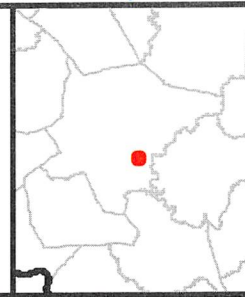
Diversified Gas & Oil Corporation
100 Diversified Way
Pikeville KY, 41051

127501

Plugging Map

Legend

- Well
- ⊗ Sediment Control
- Access Road
-  Pits
-  Pad



Well No.: 127501
 UTM83-17 Meters
 North: 442564.78
 East: 4235400.94
 Elev.: 266.86

Sources: Esri, HERE, Garmin, Intermap, increment P Corp., GEBCO, USGS, FAO, NPS, NRCAN, GeoBase, IGN, Kadaster NL, Ordnance Survey, Esri Japan, METI, Esri China (Hong Kong), (c) OpenStreetMap contributors, and the GIS User Community