

WW-7
8-30-06



West Virginia Department of Environmental Protection
Office of Oil and Gas
WELL LOCATION FORM: GPS

API: 47-039-01940 WELL NO.: WV 127421 (Courtland A-5)

FARM NAME: Courtland

RESPONSIBLE PARTY NAME: EQT Production Company

COUNTY: Kanawha DISTRICT: Loudon

QUADRANGLE: Charleston West 7.5'

SURFACE OWNER: Paul Goff

ROYALTY OWNER: The Courtland Company, et al

UTM GPS NORTHING: 4238939

UTM GPS EASTING: 442441 GPS ELEVATION: 259 m (852 ft)

The Responsible Party named above has chosen to submit GPS coordinates in lieu of preparing a new well location plat for a plugging permit or assigned API number on the above well. The Office of Oil and Gas will not accept GPS coordinates that do not meet the following requirements:

1. Datum: NAD 1983, Zone: 17 North, Coordinate Units: meters, Altitude: height above mean sea level (MSL) – meters.
2. Accuracy to Datum – 3.05 meters
3. Data Collection Method:

Survey grade GPS : Post Processed Differential
Real-Time Differential

Mapping Grade GPS X: Post Processed Differential X
Real-Time Differential

4. Letter size copy of the topography map showing the well location.

I the undersigned, hereby certify this data is correct to the best of my knowledge and belief and shows all the information required by law and the regulations issued and prescribed by the Office of Oil and Gas.

Ben A. Seyler
Signature

P.S. 2092
Title

7-5-13
Date

Received

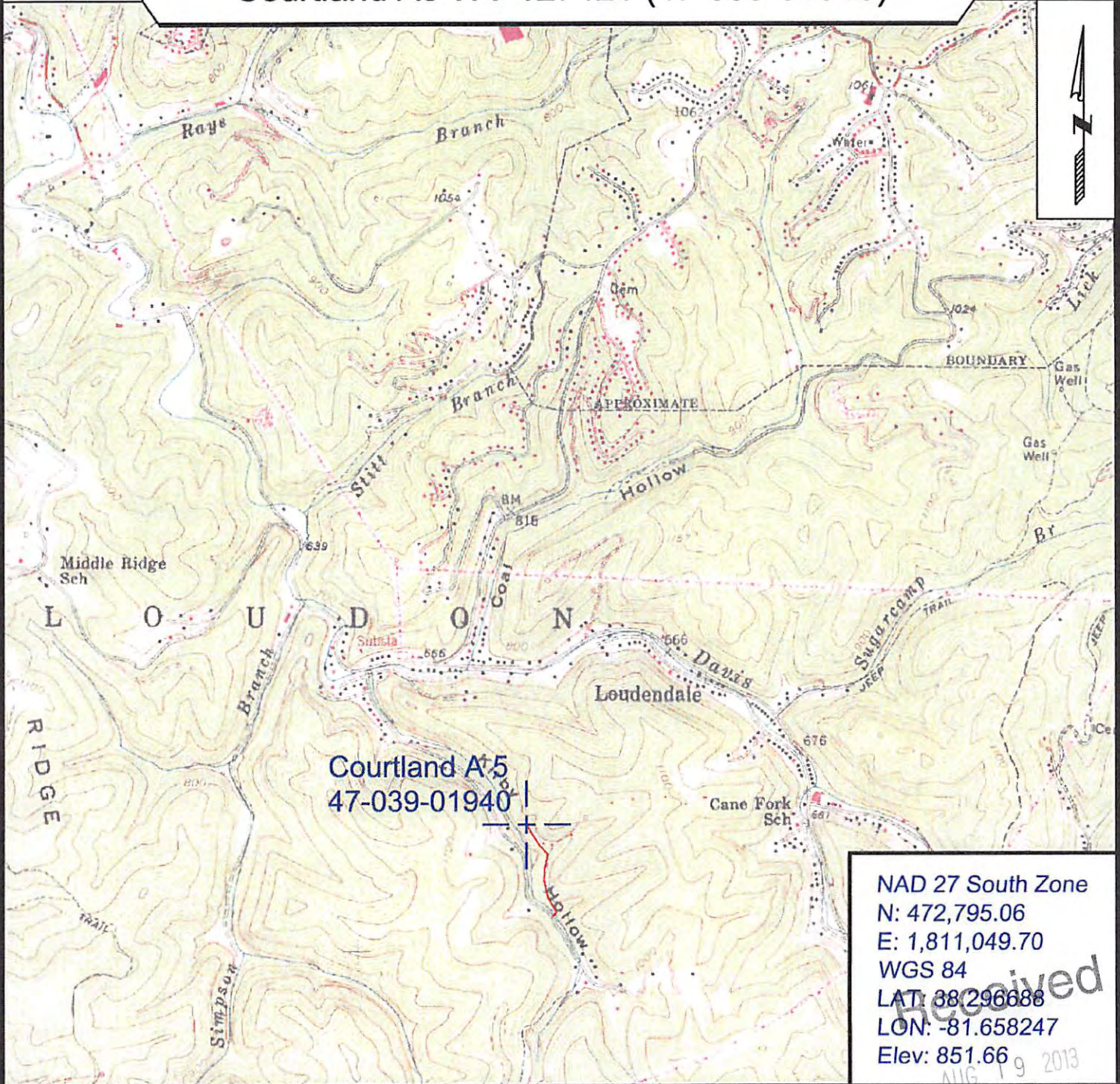
AUG 19 2013

Office of Oil and Gas
WV Dept. of Environmental Protection

Topo Quad: Charleston West 7.5' Scale: 1" = 2000'
 County: Kanawha Date: May 28, 2012
 District: Loudon Project No: 52-14-00-07

Courtland A5 WV 127421 (47-039-01940)

Topo



Courtland A5
 47-039-01940

NAD 27 South Zone
 N: 472,795.06
 E: 1,811,049.70
 WGS 84
 LAT: 38.296688
 LON: -81.658247
 Elev: 851.66

Received
 AUG 19 2013



SURVEYING AND MAPPING SERVICES PERFORMED BY:
ALLEGHENY SURVEYS, INC.

1-800-482-8606
 P.O. BOX 438
 BIRCH RIVER, WV 26610
 PH: (304) 649-8606
 FAX: (304) 649-8608

PREPARED FOR:

EQT Production Company

P.O. Box 280
 Bridgeport, WV 26330

Dept. of Oil and Gas
 Dept. of Environmental Protection