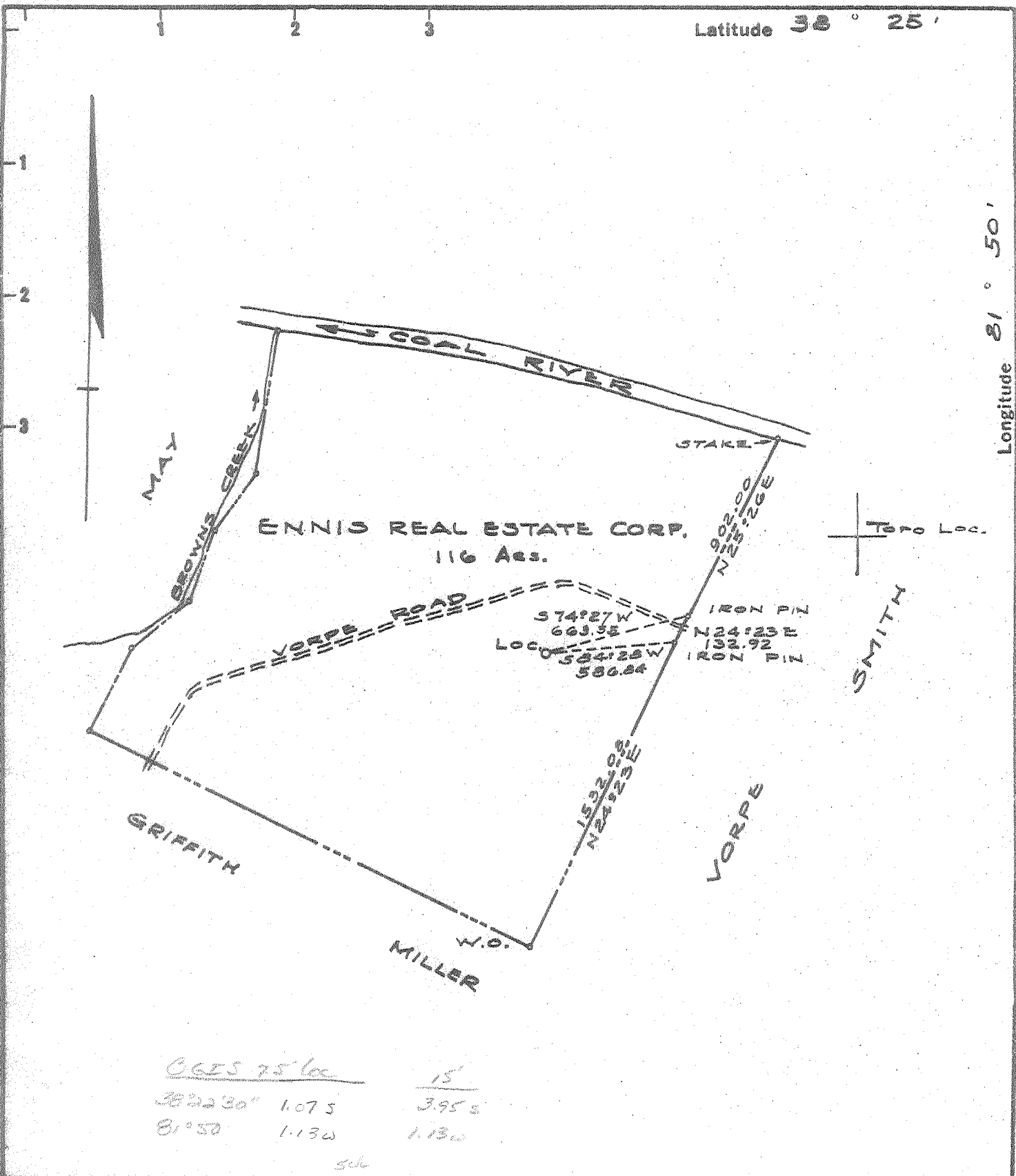


Latitude 38° 25'

Longitude 81° 50'



0625 75' loc 15  
 38° 22' 30" 1.075 3.95 s  
 81° 50' 1.130 1.130  
 sch

- Fracture
- Before 6/5/27
- New Location
- Drill Deeper
- Redrill
- Abandonment

I, the undersigned, hereby certify that this map is correct to the best of my knowledge and belief and shows all the information required by Paragraph 5 of the Rules and Regulations of the Oil and Gas Section of the Mining Laws of West Virginia.  
 The accuracy of this survey is within the limits and as prescribed in paragraph 5 by the Oil and Gas Division of the Department of Mines Regulations.  
 PROVEN ELEVATION U.S.G.S. BM Elev. 612.0

Company TWM PETROLEUM CORP.  
 Address 601 KANAWHA VALLEY BK BLDG CHAS, W.V.  
 Farm ENNIS REAL ESTATE CORP.  
 Tract \_\_\_\_\_ Acres 116 Acs. Lease No. \_\_\_\_\_  
 Well (Farm) No. 4 Serial No. \_\_\_\_\_  
 Elevation (Spirit Level) 621.00  
 Quadrangle ST. ALBANS  
 County KANAWHA District JEFFERSON  
 Engineer J. L. Deaton  
 Engineer's Registration No. 1832  
 File No. \_\_\_\_\_ Drawing No. \_\_\_\_\_  
 Date 7-8-67 Scale 1" = 600'

STATE OF WEST VIRGINIA  
 DEPARTMENT OF MINES  
 OIL AND GAS DIVISION  
 CHARLESTON

WELL LOCATION MAP  
 FILE NO. KAN-2137-P

+ Denotes location of well on United States Topographic Maps, scale 1 to 62,500 latitude and longitude lines being represented by border lines as shown.  
 - Denotes one inch spaces on border line of original tracing.



STATE OF WEST VIRGINIA  
DEPARTMENT OF MINES  
OIL AND GAS DIVISION

- Rotary
- Spudder
- Cable Tools
- Storage

Quadrangle

Permit No. Kan-2137

WELL RECORD

Oil or Gas Well

Company	TWM Petroleum, Inc.	Casing and Tubing	Used in Drilling	Left in Well	Packers
Address	912-A Goff Bldg., Clarksburg, W. Va.				
Farm	Ennis Realty Co.	Size			
Location (waters)	Coal River	16			Kind of Packer
Well No.	1	Elev. 621 G.L.	61	61	
District	Jefferson	County Kanawha	13 3/8	633	Size of
The surface of tract is owned in fee by	Ennis Realty Co.	Address St. Albans, W. Va.	10 9-5/8	1750	Depth set
Mineral rights are owned by	Ennis Realty Co.	Address St. Albans, W. Va.	8 1/4	5070	
Drilling commenced	7-25-67		6 3/4	1147	
Drilling completed	8-4-67		5 3/16		
Date Shot	From To		4 1/2		
With			3		Perf. top
Open Flow	/10ths Water in	Inch	2		Perf. bottom
Volume	dry	Cu. Ft.			Perf. top
Rock Pressure	lbs.	hrs.			Perf. bottom
Oil		bbls., 1st 24 hrs.			

Attach copy of cementing record. OVER

CASING CEMENTED SIZE No. Ft.

Amount of cement used (bags)

Name of Service Co. Dowell

COAL WAS ENCOUNTERED AT FEET

FEET INCHES FEET

FEET INCHES FEET

WELL ACIDIZED (DETAILS)

WELL FRACTURED (DETAILS)

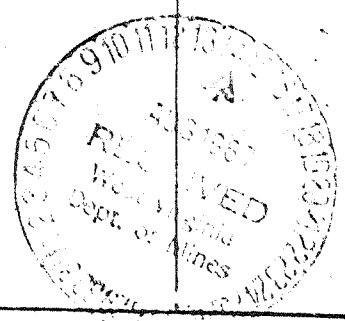
RESULT AFTER TREATMENT (Initial open Flow or bbls.)

ROCK PRESSURE AFTER TREATMENT HOURS

Fresh Water Feet Salt Water Feet

Producing Sand Depth

Formation	Color	Hard or Soft	Top	Bottom	Oil, Gas or Water	Depth	Remarks
Soil			0	10			
Sand & Shale			10	835			
Sand			835	958			
Shale			958	978			
Sand			978	1308	Water	998	
Shale			1308	1372			
Little Lime			1372	1398			
Big Lime			1398	1598			
Injun			1598	1673	Water	1635-50	Incr
Shal			1673	2100			
Berea Sd.			2100	2120			
Lime & Shale			2120	4328			
Carniferous			4328	4417			
Oriskany			4417	4441			
Helderberg			4441	4575			
Lime			4575	5073			
Newburg			5073	5085			
Lime			5085	5109			
T. D.				5109			



DEEP WELL

Formation	Color	Hard or Soft	Top	Bottom	Oil, Gas or Water	Depth Found	Remarks
Casing Record							
7-26-67							Set and cemented 13-3/8 csg. @ 61' with 50 sacks regular cement with 4% calcium chloride
7-28-67							Set and cemented 9-5/8 new casing at 1750 and cemented with 150 sacks of class A cement + 10% salt. R/L nipple @ 1117'
8-1-67							Set and cemented 7" N-80, 23# casing @ 5070' and cemented with 41 sacks of Litepoz #3 + 5% salt and tailed in with 41 sacks of class A cement with cealment. R/L Nipple @ 3923

Date August 14, 1967

APPROVED TWM PETROLEUM, INC., Own

By [Signature]  
(Title)