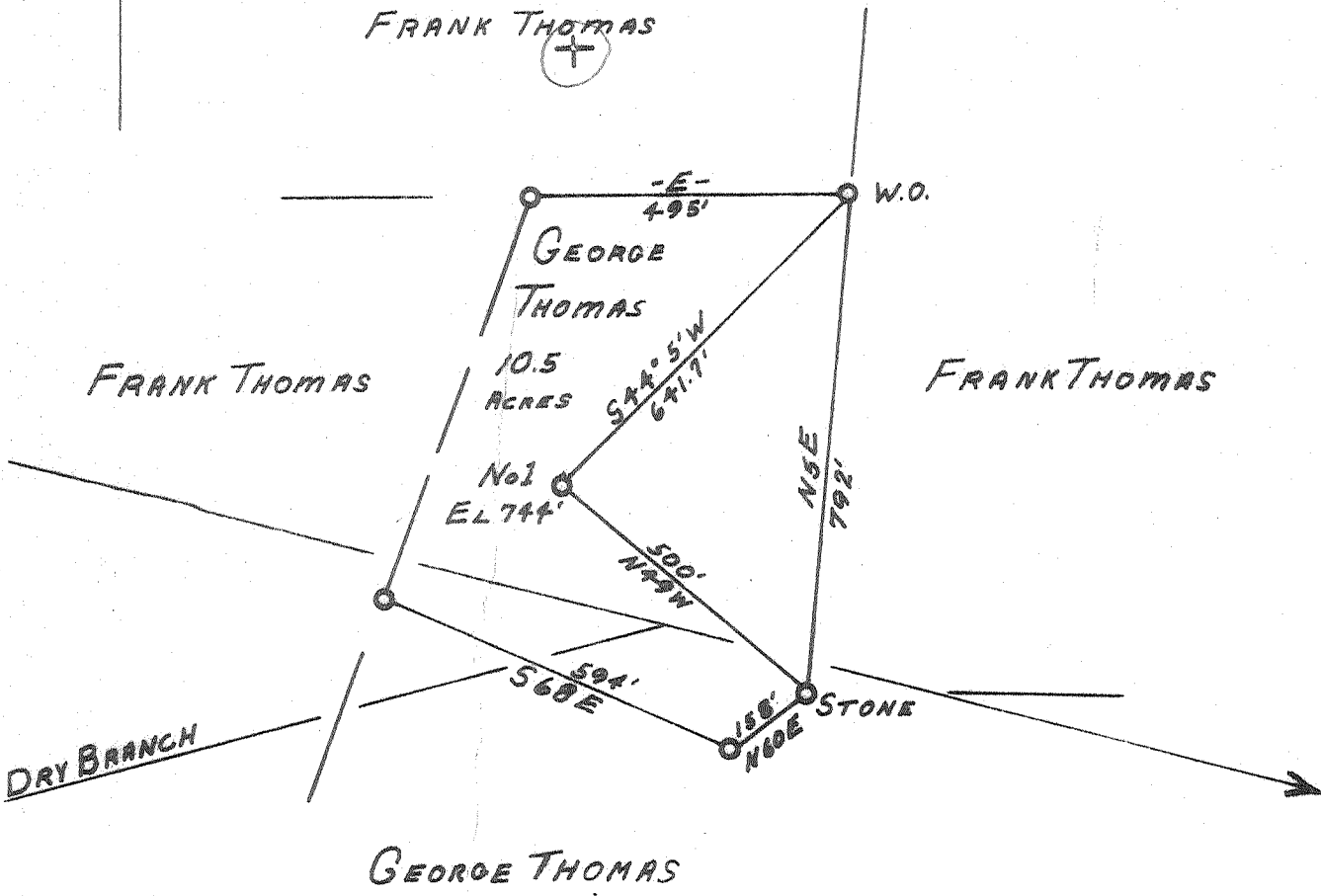


Latitude 38 35

Longitude 81 40

3.5795  
A. 20 W

FRANK THOMAS



- New Location
- Drill Deeper
- Redrill
- Abandonment

CLOSURE: 1/200 KAN-931 ; 852.43'  
 "I, the undersigned, hereby certify that this map is correct to the best of my knowledge and belief and shows all the information required by paragraph 6 of the rules and regulations of the oil and gas section of the mining laws of West Virginia."

*1782*

Company STONE STREET LANDS Co.  
 Address SPENCER W.VA.  
 Farm GEORGE THOMAS  
 Tract \_\_\_\_\_ Acres 10.5 Lease No. \_\_\_\_\_  
 Well (Farm) No. 1 Serial No. \_\_\_\_\_  
 Elevation (Spirit Level) 744  
 Quadrangle KENNA SW  
 County KANAWHA District UNION  
 Engineer L.Z. SHUCK  
 Engineer's Registration No. 4596  
 File No. \_\_\_\_\_ Drawing No. \_\_\_\_\_  
 Date 9-10-67 Scale 1" = 300' = 0

STATE OF WEST VIRGINIA  
 DEPARTMENT OF MINES  
 OIL AND GAS DIVISION  
 CHARLESTON

WELL LOCATION MAP  
 FILE NO. KAN-2166

+ Denotes location of well on United States Topographic Maps, scale 1 to 62,500, latitude and longitude lines being represented by border lines as shown.

- Denotes one inch spaces on border line of original tracing.

*Deep Well (Newburg)*



STATE OF WEST VIRGINIA  
DEPARTMENT OF MINES  
OIL AND GAS DIVISION 3

Rotary   
Spudder   
Cable Tools   
Storage   
Oil or Gas Well  Gas (KIND)

Quadrangle Kenna

WELL RECORD

Permit No. Kan-2166

Company	Stonestreet Lands Company	Casing and Tubing	Used in Drilling	Left in Well	Packers
Address	Box 350, Spencer, W. Va.	Size			
Farm	George Thomas	Acres	10.5		
Location (waters)	Dry Branch	1/8 18"	18'	18'	Kind of Packer
Well No.	1	Elev.	744'		
District	Union	County	Kanawha	10-3/4"	700'
The surface of tract is owned in fee by Geo. Thomas, et als		Size	6 5/8	1946'	1946'
Rt. 4, Box 202 Address Charleston, W. Va.			6%		Depth set
Mineral rights are owned by Same			5 3/16 1/2	5544'	5544'
Address			4 1/2		
Drilling commenced	9-20-67		3		Perf. top 4813
Drilling completed	10-20-67		2		Perf. bottom 4816
Date Shot	NA	From		To	
With		Liners Used			Perf. top
					Perf. bottom

Open Flow /10ths Water in Inch Attach copy of cementing record.  
/10ths Merc. in Inch

Volume Cu. Ft. CASING CEMENTED SIZE No. Ft. Date

Rock Pressure lbs. hrs. Amount of cement used (bags) See Attached Record

Oil bbls. 1st 24 hrs. Name of Service Co.

WELL ACIDIZED (DETAILS) NA COAL WAS ENCOUNTERED AT FEET INCHES

FEET INCHES FEET INCHES

WELL FRACTURED (DETAILS) Yes, 700 bbls. of water, 14,000 lbs. of sand and

500 gals. of acid


RESULT AFTER TREATMENT (Initial open flow or bbls.) Estimated 5,000 <sup>M</sup> cubic feet

ROCK PRESSURE AFTER TREATMENT 1550 lbs. HOURS 24 hrs.

Fresh Water None Feet Salt Water 1410' Feet Holefull

Producing Sand Oriskany Depth 4813 - 4816

Formation	Color	Hard or Soft	Top	Bottom	Oil, Gas or Water	Depth	Remarks
DRILLED BY CABLE TOOLS							
Soil				15			
Red Rock			10	50			
Slate			50	75			
Red Rock			75	100			
Slate			100	132			
Sand			132	136			
Slate			136	175			
Red Rock			175	200			
Slate			200	225			
Red Rock			225	275			
Slate			275	310			
Red Rock			310	350			
Slate			350	360			
Pink Rock			360	375			
Slate			375	390			
Lime			390	395			
Sand			395	423			
Slate			423	430			
Sand			430	465			
Red Rock			465	490			
Slate & Shells			490	508			
Red Rock			508	530			
Slate			530	550			
Sand			550	634			
Slate			634	660			
Sand			660	682			

Formation	Color	Hard or Soft	Top <sup>3</sup>	Bottom	Oil, Gas or Water	Depth Found	Remarks
Slate			682	785			
Sand			785	840			
Slate			840	860			
Sand			860	945			
Slate			945	960			
Sand			960	980			
Slate			980	1006			
Sand			1006	1050			
Slate & Shells			1050	1095			
Sand			1095	1128			
Slate & Shells			1128	1166			
Sand			1166	1190			
Slate			1190	1222			
Sand			1222	1240			
Slate & Shells			1240	1307			
Sand			1307	1717 - 410			
Big Lime			1717	1830 - 113			
Injun Sand			1830	1868 - 38			
Slate			1868	1880 - 12			
Sand			1880	1895			
Lime			1895	1927			
DRILLED BY ROTARY							
Corniferous Lime			4726	4800			
Oriskany			4800	4865			
Newburg			5582	5595 - 13			
Total Depth				5643	McKenzie		
Filled from total depth of 5643' back to 5400' with neat cement.							
Present Total Depth				5400			
 ---							

5643  
4865  
---  
778

Date January 4, 19 68

APPROVED Stonestreet Lands Company, Owner

By Leggy Sherman, Secretary  
(Title)

DANNY BOY GAS COMPANY

2166

WELL #1, POOLE 12

UNION DISTRICT, KANAWHA COUNTY, WEST VIRGINIA

Well drilled on Tract #1 of Poole 12 Merger, George Thomas Farm.

TANGIBLE DRILLING AND DEVELOPMENT EXPENSES

Casing

Surface Casing  
10" Casing  
10" Casing Shoe  
8" Casing  
8" Casing Shoe  
8" Centralizers  
5" Casing  
5" Centralizers  
5" Casing Shoe - Float Type

SHUTTING IN EQUIPMENT

8-5/8" OD Casing Clamps  
1 - 8" Weld Collar  
1 - 8-5/8" X 5-1/2" Support Head  
2 - 2", 3,000 lb. Working Pressure Demco Flanged Gate Valve  
1 - 5" Weld On Nipple  
1 - 6", 900 Series Flange  
1 - 2", 3,000 lb. Working Pressure Gate Valve  
1 - 3", 3,000 lb. Working Pressure Demco Gate Valve  
1 - 4", 4,000 lb. Working Pressure Demco Gate Valve

SUB-TOTAL \$38, 128.00

INTANGIBLE DRILLING AND DEVELOPMENT COSTS

Drilling

Day Work Consisting of

Logging Time  
Running Casing  
Shutting In Time  
Cementing  
Fracturing

Trucking

Casing  
Water Hauling  
Tanks  
Jell  
Cement  
Shutting In Equipment

Bulldozing

Pond  
Location  
Sump Pits  
Roads  
Smooth Up Work After Drilling  
Towing