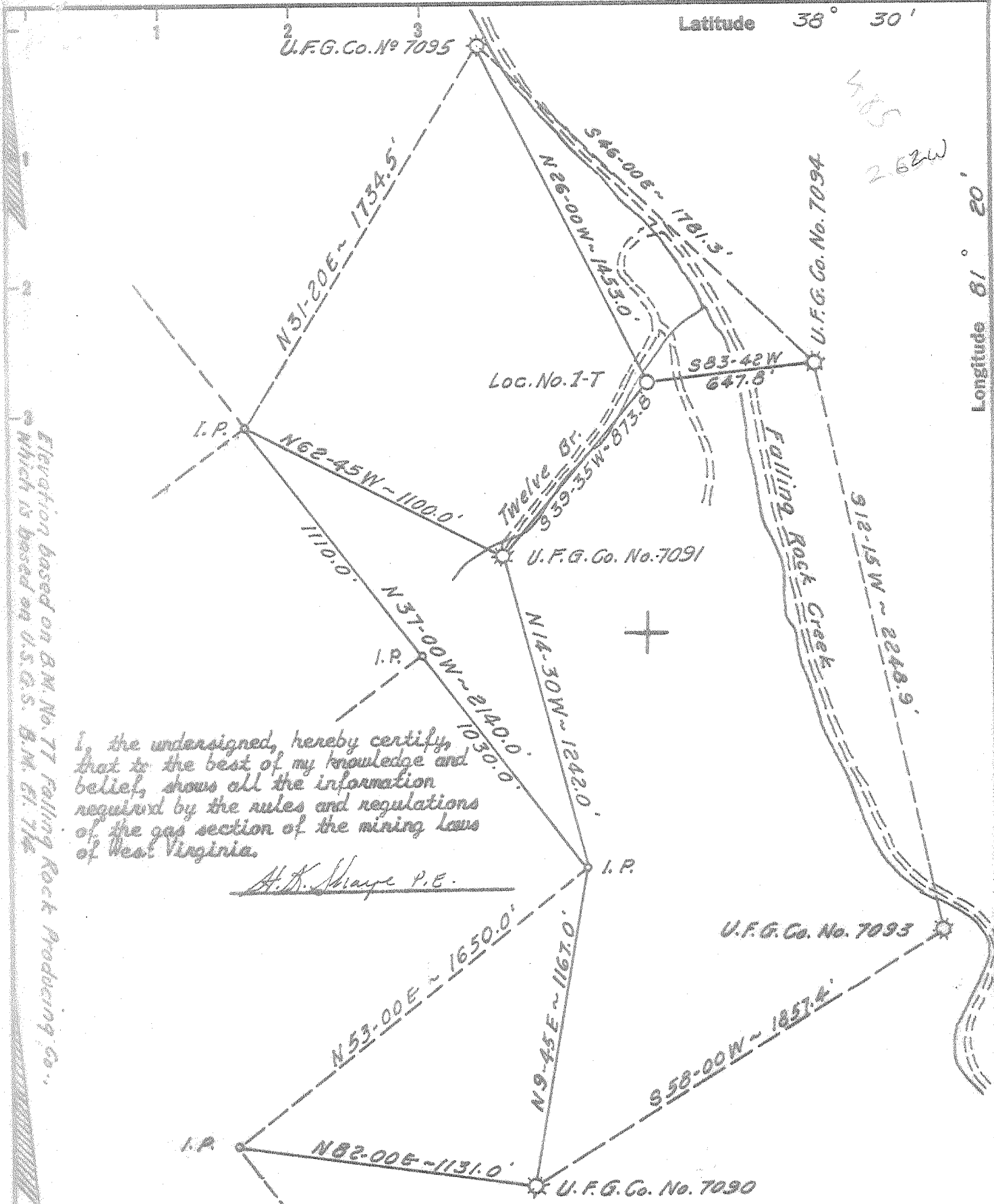


Latitude 38° 30'

Longitude 81° 20'



I, the undersigned, hereby certify that to the best of my knowledge and belief, shows all the information required by the rules and regulations of the gas section of the mining laws of West Virginia.

H. K. Shaye P.E.

Elevation based on B.M. No. 7T Falling Rock Producing Co., which is based on U.S.G.S. B.M. 6174E

- New Location
- Drill Deeper
- Abandonment

Error of closure is within limits set by the Oil & Gas Division, W. Va. Department of Mines.

Company J. L. TRITTIPO
 Address 1111 Nelson Bldg. Charleston, W. Va.
 Farm Falling Rock Producing Co.
 Tract _____ Acres 3240 Lease No. _____
 Well (Farm) No. one-T Serial No. _____
 Elevation (Spirit Level) 712.7 Gr.
 Quadrangle Glendener ^{NC}
 County Kanawha District Big Sandy
 Engineer H. K. Shaye
 Engineer's Registration No. 2429 Ky.
 File No. _____ Drawing No. _____
 Date April 1, 1968 Scale 1" = 500'

STATE OF WEST VIRGINIA
 DEPARTMENT OF MINES
 OIL AND GAS DIVISION
 CHARLESTON

WELL LOCATION MAP
 FILE NO. KAN-2241

- + Denotes location of well on United States Topographic Maps, scale 1 to 62,500, latitude and longitude lines being represented by border lines as shown.
- Denotes one inch spaces on border line of original tracing.

Formation	Color	Hard or Soft	Top	Bottom	Oil, Gas or Water	Depth Found	Remarks
SAND	GRAY	HARD	6074	6096			
LIME	GRAY	HARD	6096	6290			
SHALE	GRAY	SOFT	6290	6660			
Tusc. SAND	GRAY	MED.	6660	6744	GAS		
Tusjata SHALE	GRAY	SOFT	6744	6761	T.D.		
		6744	6660	6074			
		713	713	313			
		6031	5947	5361			

Date 2-17-5, 10 19

APPROVED _____, Owner

By [Signature]

WR-35

12-Feb-98
API # 47- 39-02241 F

State of West Virginia
Division of Environmental Protection
Section of Oil and Gas

Reviewed MS

Well Operator's Report of Well Work

Farm name: HAMER, JIM C. Operator Well No.: 7220

LOCATION: Elevation: 712.70 Quadrangle: BLUE CREEK

District: BIG SANDY County: KANAWHA
Latitude: 10300 Feet South of 38 Deg. 27Min. 30 Sec.
Longitude 2500 Feet West of 81 Deg. 22 Min. 30 Sec.

Company: COLUMBIA GAS TRANSMISSION
P. O. BOX 1273
CHARLESTON, WV 25325-1273

Agent: RICHARD L. COTY

Inspector: CARLOS HIVELY
Permit Issued: 02/16/98
Well work Commenced: 06/02/98
Well work Completed: 09/14/98
Verbal Plugging
Permission granted on: _____
Rotary _____ Cable _____ Rig
Total Depth (feet) 5150'
Fresh water depths (ft) _____
Not Reported
Salt water depths (ft) _____
Not Reported
Is coal being mined in area (Y/N)? N
Coal Depths (ft): Not Reported

Casing & Tubing	Used in Drilling	Left in Well	Cement Fill Up Cu. Ft.
Size			
13-3/8"	481b, H-40	80'	
9-5/8"	321b, H-40	1800'	
7"	231b, N-80	5860'	
New 4-1/2"	11.6lb, N-80	5140'	75 sx

OPEN FLOW DATA

Producing formation Oriskany Storage Pay zone depth (ft) 5102' - 5118'
Gas: Initial open flow N/A MCF/d Oil: Initial open flow _____ Bbl/d
Final open flow _____ MCF/d Final open flow _____ Bbl/d
Time of open flow between initial and final tests _____ Hours
Static rock Pressure N/A psig (surface pressure) after _____ Hours

Second producing formation _____ Pay zone depth (ft) _____
Gas: Initial open flow _____ MCF/d Oil: Initial open flow _____ Bbl/d
Final open flow _____ MCF/d Final open flow _____ Bbl/d
Time of open flow between initial and final tests _____ Hours
Static rock Pressure _____ psig (surface pressure) after _____ Hours

NOTE: ON BACK OF THIS FORM PUT THE FOLLOWING: 1). DETAILS OF PERFORATED INTERVALS, FRACTURING OR STIMULATING, PHYSICAL CHANGE, ETC. 2). THE WELL LOG WHICH IS A SYSTEMATIC DETAILED GEOLOGICAL RECORD OF ALL FORMATIONS, INCLUDING COAL ENCOUNTERED BY THE WELLBORE.

Office of Oil & Gas
Permitting

MAR 01 1999

WV Division of
Environmental Protection

For: COLUMBIA GAS TRANSMISSION CORP.

By: [Signature]
Date: 2/22/99

MAR 16 1999

KAN 2041 F

Pulled 5149' of 2-3/8", 4.6 lb tubing, set 10' calseal plug at 5140' - 5150'.

Ran 5140' of 4-1/2", 11.6 lb, N-80 casing and cemented using 75 sx neat cement. Perforated Oriskany 5102' - 5118' using 6 SPF and pumped an N2-Assist Deltafrac using 307 bbls of water, 67 MSCF N2, and 5400 lbs of 20/40 sand at 1 - 3 PPG.