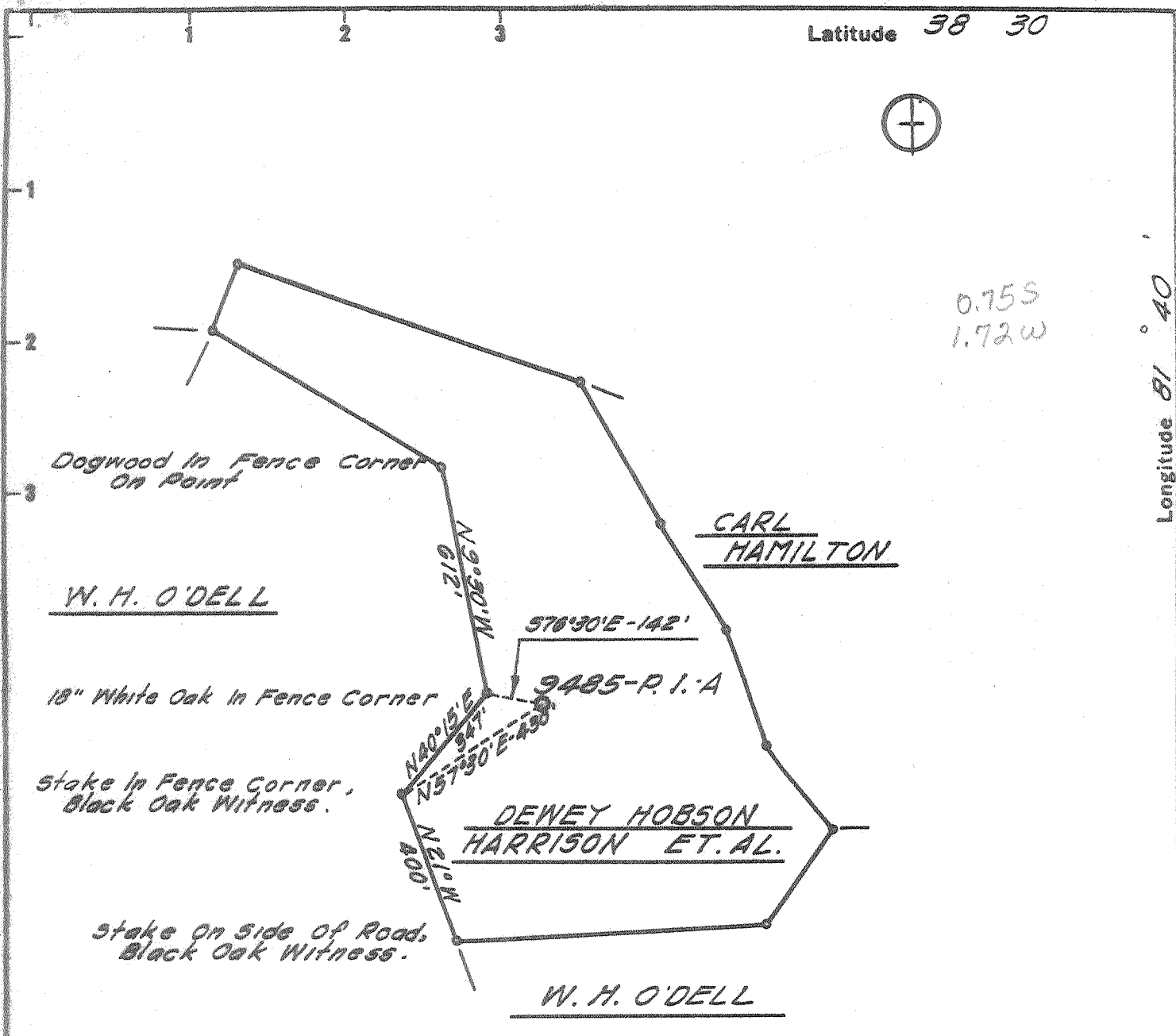


Latitude 38 30

Longitude 81 40



0.75 S
1.72 W



BENCH MARK DESCRIPTION

U.S.G.S. Bronze Tablet in Concrete Monument
 Stamped T.T. 26 G.B. - 1955 Near Mouth of Utah
 Val. Along W. Va. Secondard Route No. 31.
 Elev. 616.00'

DEGREE OF ACCURACY
 One Part in 200

- Fracture Before 6/5/29
- New Location
- Drill Deeper
- Redrill
- Abandonment

I, the undersigned, hereby certify that this map is correct to the best of my knowledge and belief and shows all the information required by Paragraph 5 of the Rules and Regulations of the Oil and Gas Section of the Mining Laws of West Virginia.
 The accuracy of this survey is within the limits and as prescribed in paragraph 5 by the Oil and Gas Division of the Department of Mines Regulations.
PROVEN ELEVATION 616.00'

Company UNITED FUEL GAS CO.
 Address CHARLESTON, W. VA.
 Farm DEWEY HOBSON HARRISON, ET. AL.
 Tract _____ Acres 288.5 Lease No. 45529
 Well (Farm) No. _____ Serial No. 9485-P. I. A
 Elevation (Spirit Level) 866.30'
 Quadrangle CHARLESTON NW
 County KANAWHA District UNION
 Engineer James E. Hardman
 Engineer's Registration No. 2330
 File No. 58-67 Drawing No. _____
 Date MARCH 22 '68 Scale 1" = 400'

STATE OF WEST VIRGINIA
 DEPARTMENT OF MINES
 OIL AND GAS DIVISION
 CHARLESTON

WELL LOCATION MAP
 FILE NO. KAN-2248

+ Denotes location of well on United States Topographic Maps, scale 1 to 62,500 latitude and longitude lines being represented by border lines as shown.
 - Denotes one inch spaces on border line of original tracing.



STATE OF WEST VIRGINIA
 DEPARTMENT OF MINES
 OIL AND GAS DIVISION

Rotary
 Spudder
 Cable Tools
 Storage

Quadrangle Charleston
 Permit No. Kan. -2248

WELL RECORD

Oil or Gas Well GAS
 (KIND)

Company United Fuel Gas Company
 Address 1700 MacCorkle Ave., Charleston, W. Va.
 Farm Dewey Hobson Harrison, et al Acres 288.5
 Location (waters) Martin Branch
 Well No. 9485-PI A Elev. 866.30'
 District Union County Kanawha

Casing and Tubing	Used in Drilling	Left in Well	Packers
Size			Kind of Packer
16			
13 3/8"	65'	65'	
10 5/8"	1974'	1974'	Size of
8 1/4"			
6 3/4"	5679'	5679'	Depth set
5 3/16"			
4 1/2"			
3"			Perf. top
2 3/8"	5677'	5677'	Perf. bottom
Liners Used			Perf. top
			Perf. bottom

The surface of tract is owned in fee by
 Address
 Mineral rights are owned by
 Address
 Drilling commenced May 16, 1968
 Drilling completed May 22, 1968
 Date Shot From To
 With
 Open Flow /10ths Water in Inch
 /10ths Merc. in Inch
 Volume Cu. Ft.
 Rock Pressure lbs. hrs.
 Oil bbls., 1st 24 hrs.

Attach copy of cementing record.
 CASING CEMENTED SIZE No. Ft. Date
 Amount of cement used (bags)
 Name of Service Co.
 COAL WAS ENCOUNTERED AT FEET INCHES
 FEET INCHES FEET INCHES
 FEET INCHES FEET INCHES

WELL ACIDIZED (DETAILS)
 WELL FRACTURED (DETAILS) May 27, 1968 with 1,000 gallons mud acid, 35,410 gallons water, 30,000# 20/40 sand

RESULT AFTER TREATMENT (Initial open Flow or bbls.) 24,600 Mcf (Four Point Potential Test) 24,600,000
 ROCK PRESSURE AFTER TREATMENT 1770.7 psig HOURS
 Fresh Water 1200 Feet Salt Water Feet
 Producing Sand Newburg Depth 5705'

Formation	Color	Hard or Soft	Top	Bottom	Oil, Gas or Water	Depth	Remarks
Oil			0	25			
Sandstone			25	75	Show sulphur gas	5200'	
Sale & Sand			75	1200			
Alt Sand			1200	1700	Gas	5671', 5674-5677' & 5679'	9,160 Mcf
g Lime			1700	1865			
Jun			1865	1915	Test before fracturing		8,540 Mcf
ale			1915	4821			
me Corniferous			4821	4917	Final Open Flow:		24,600 Mcf Four
nd Oriskany			4917	4953	Point Potential Test		
me			4953	5670			
nd Newburg			5670	5689			
me McKenzie			5689	5705	Logs Run: Gamma Ray Density		
tal Depth			5705'		Casing Points:		
					13 3/8"	42# 65'	Cemented with 70 bags to surface
					9 5/8"	32# 1959'	Cemented with 20 bags to surface
					7"	23# 5635'	Cemented with 150 bags from 5634-4637'
					2 3/8"	4.6# 5658'	



5670
 866
 4804