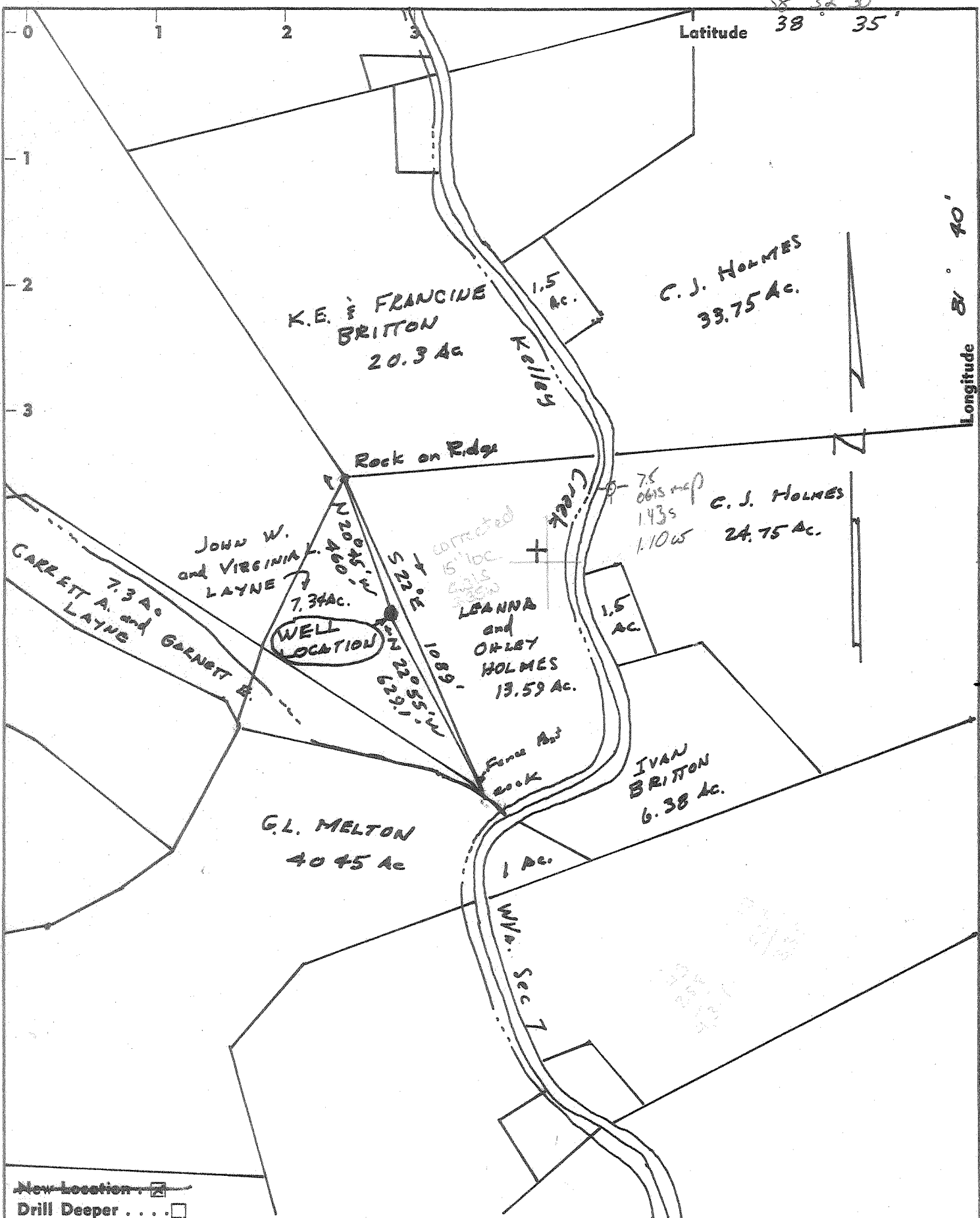


38° 32' 30"



- New Location
 - Drill Deeper
 - Redrill
 - Abandonment
- Issued 7/15/68

"I, the undersigned, hereby certify that this map is correct to the best of my knowledge and belief and shows all the information required by paragraph 6 of the rules and regulations of the oil and gas section of the mining laws of West Virginia."

Company	REFINERS PETROLEUM CORP.
Address	601 Commercial Bldg. Canton Ohio
Farm	JOHN W. and VIRGINIA A. LANE
Tract	Acres 251 Unit Lease No.
Well (Farm) No.	LAYNE #1 Serial No.
Elevation (Spirit Level)	855.63
Quadrangle	KANNA SW
County	KANAWHA District UNION
Engineer	Arthur E. Parks
Engineer's Registration No.	1530
File No.	S-442 Drawing No. 1
Date	JUNE 6, 1968 Scale 1" = 400'

STATE OF WEST VIRGINIA
DEPARTMENT OF MINES
OIL AND GAS DIVISION
CHARLESTON

WELL LOCATION MAP

FILE NO. KAN-2253-P

(TRANS. FROM GUS BERRY)

+ Denotes location of well on United States Topographic Maps, scale 1 to 62,500, latitude and longitude lines being represented by border lines as shown.

- Denotes one inch spaces on border line of original tracing.



STATE OF WEST VIRGINIA
DEPARTMENT OF MINES
OIL AND GAS DIVISION

Rotary
Spudder
Cable Tools
Storage
(Oil or Gas Well)

Quadrangle Kenna
Permit No. Kan-9263-7753

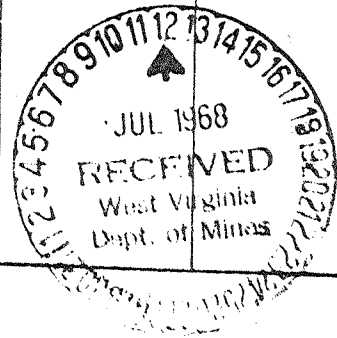
WELL RECORD

Company	Refiners Petroleum Corp.	Casing and Tubing	Used in Drilling	Left in Well	Packers
Address	601 Commercial Bldg. Canton, Ohio	Size			
Farm	J. W. & Virginia Layne Acres 251	16			Kind of Packer
Location (waters)	Spring Branch Creek	13	90	90	
Well No.	Elev. 855.63'	10			Size of
District	Union County Kanawha	8 1/4	2065	2065	
The surface of tract is owned in fee by	J & W. Virginia Layne	6 3/4			Depth set
Mineral rights are owned by		5 3/16	5620		
Drilling commenced	6-16-68	4 1/2			Perf. top
Drilling completed	7-8-68	3			Perf. bottom
Date Shot	From To	2			Perf. top
With		Liners Used			Perf. bottom

Open Flow /10ths Water in Inch Attach copy of cementing record.
/10ths Merc. in Inch CASING CEMENTED 5 1/2" SIZE 5620 No. Fl. 7-5-68
Volume Cu. Ft. Amount of cement used (bags) 200
Rock Pressure lbs. hrs. Name of Service Co. Halliburton
Oil bbls., 1st 24 hrs. COAL WAS ENCOUNTERED AT FEET FEET FEET
WELL ACIDIZED (DETAILS) FEET INCHES FEET
WELL FRACTURED (DETAILS) FEET INCHES FEET

RESULT AFTER TREATMENT (Initial open flow or bbls.)
ROCK PRESSURE AFTER TREATMENT HOURS
Fresh Water Feet Salt Water Feet
Producing Sand Depth

Formation	Color	Hard or Soft	Top	Bottom	Oil, Gas or Water	Depth	Remarks
Shale & Sd.			0	1680			
Maxton	tan	S	1680	1700			
Red Shale	red	S	1700	1710			
Big Lime	white	H	1710	1880			
Big Injun	tan	H	1880	1940	show oil	1820	
Sandy Shale	Gr. to Bl.	S	1940	2005			
Shale	Gray	S	2005	2360			
Berea	tan	S	2360=	2380	show oil	2360-70	
Shale & Siltstone	GR. to Bl.	S	2380	4811			
Corniferous LS.	tan	H	4811	4896			
Oriskany	tan	H	4896	4932	VSS gas	4896	
Devonian LS.	tan to light brown	H&S	4932	5666			
Newburg	brown	H	5666	5683			
Shale	black	S	5683	5689	VSS Gas		



DSEP WELL