

POCA COAL CO.

Minimum Error of Closure 1 IN 200  
 Source of Elevation CABOT WALL No. 1071 Elev 630'

New Location   
 Drift Deeper   
 Abandonment   
*issued 7/18/74*

"I, the undersigned, hereby certify that this map is correct to the best of my knowledge and belief and shows all the information required by paragraph 6 of the rules and regulations of the oil and gas section of the mining laws of West Virginia."

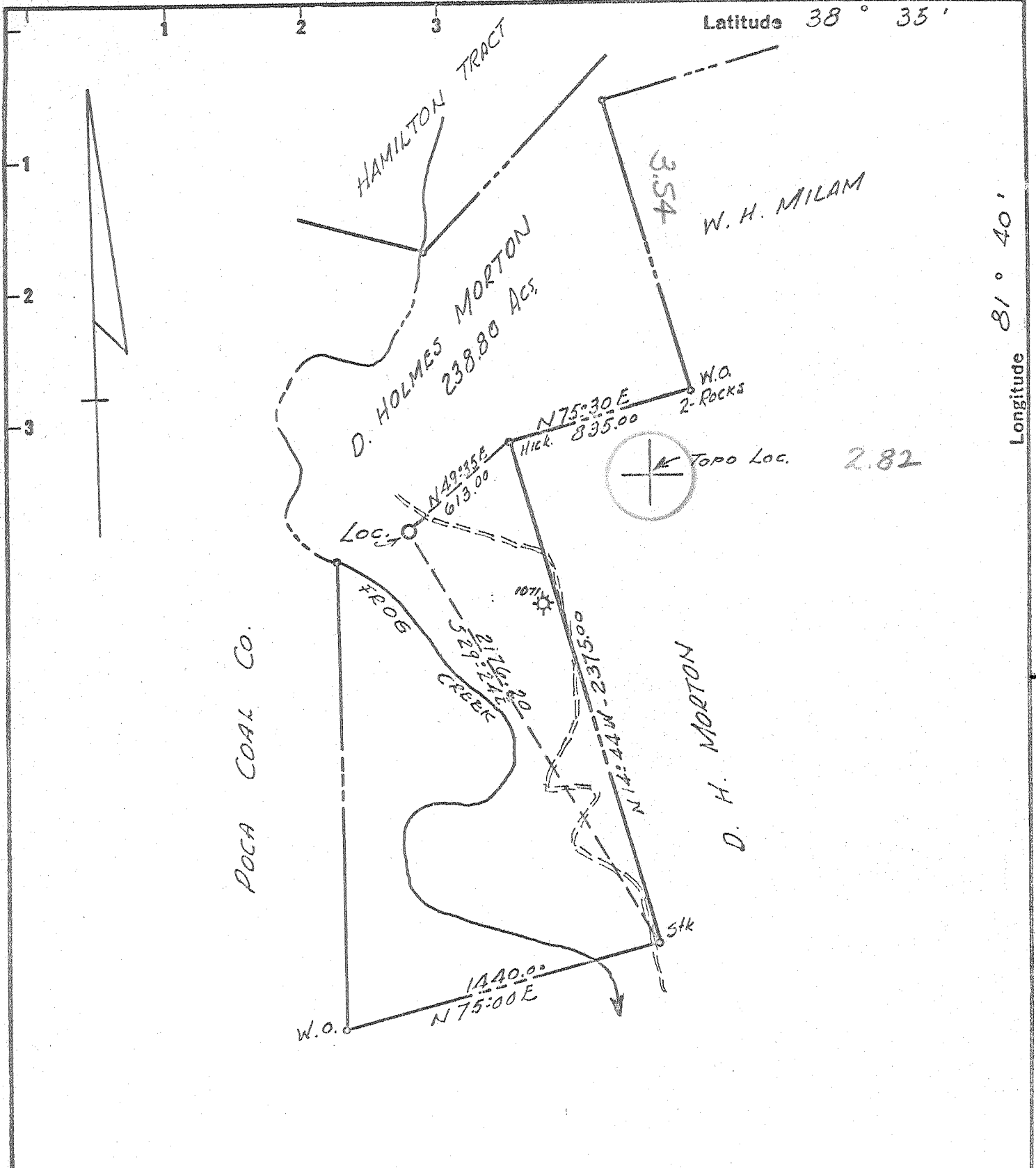
Company PATRICK OIL & GAS CORP.  
 Address JACKSON, MICHIGAN 49201  
 Farm D HOLMES MORTON  
 Tract Acres 238.8 of 760± Unit Lease No. \_\_\_\_\_  
 Well (Farm) No. ± 3 Serial No. 1400  
 Elevation (Spirit Level) 826.0 641' 75 SW  
 Quadrangle CHARLESTON KENNA  
 County KANAWHA District POCA  
 Engineer A. S. Lefton  
 Engineer's Registration No. 1832  
 File No. \_\_\_\_\_ Drawing No. \_\_\_\_\_  
 Date 1-16-69 Scale 1" = 600'

STATE OF WEST VIRGINIA  
 DEPARTMENT OF MINES  
 OIL AND GAS DIVISION  
 CHARLESTON  
**WELL LOCATION MAP**  
 FILE NO. KAN-2349-P

+ Denotes location of well on United States Topographic Maps, scale 1 to 62,500 latitude and longitude lines being represented by border lines as shown.

- Denotes one inch spaces on border line of original tracing.

47-039



New Location   
 Drill Deeper   
 Abandonment

Minimum Error of Closure 1 IN 200  
 Source of Elevation CAPOT WELL No 1071 Elev 630'

"I, the undersigned, hereby certify that this map is correct to the best of my knowledge and belief and shows all the information required by paragraph 6 of the rules and regulations of the oil and gas section of the mining laws of West Virginia."

Company PATRICK OIL & GAS CORP.  
 Address JACKSON, MICHIGAN 49201  
 Farm D HOLMES MORTON  
 Tract \_\_\_\_\_ Acres 238.8 of 760.3 Unit  
 Well (Farm) No. 4.3 Serial No. \_\_\_\_\_  
 Elevation (Spirit Level) 826.0 '641'-7.5' topo  
 Quadrangle CHARLESTON KANNA SW  
 County KANAWHA District POCA  
 Engineer A. L. Lepton  
 Engineer's Registration No. 1832  
 File No. \_\_\_\_\_ Drawing No. \_\_\_\_\_  
 Date 1-16-69 Scale 1" = 600'

STATE OF WEST VIRGINIA  
 DEPARTMENT OF MINES  
 OIL AND GAS DIVISION  
 CHARLESTON

**WELL LOCATION MAP**  
 FILE NO. KAN-2349

+ Denotes location of well on United States Topographic Maps, scale 1 to 62,500 latitude and longitude lines being represented by border lines as shown.

- Denotes one inch spaces on border line of original tracing.

JAN 26 1969  
 6-6 Rocky Fork 312  
 Deep Well (Newburg)



STATE OF WEST VIRGINIA  
DEPARTMENT OF MINES  
OIL AND GAS DIVISION  
**WELL RECORD**

Rotary   
Spudder   
Cable Tools   
Storage   
Oil or Gas Well **Gas** (KIND)

Quadrangle **CHARLESTON**  
Permit No. **KAN-2349**

Company **PATRICK OIL & GAS CORPORATION**  
Address **744 West Michigan Avenue Jackson, Michigan 49201**

Farm **D. HOLMES MORTON** Acres **238.8**

Location (waters) **Frogs Creek**

Well No. **3** Elev. **641' VERTS 1300**

District **POCA** County **KANAWHA KANAWHA**

The surface of tract is owned in fee by **D. Holmes Morton, et ux**

Mineral rights are owned by **Same**

Drilling commenced **1-19-69**

Drilling completed **2-3-69**

Date Shot From To

With

Open Flow /10ths Water in InCh  
/10ths Merc. in InCh

Volume Cu. Ft.

Rock Pressure lbs. hrs.

Oil bbls., 1st 24 hrs.

WELL ACIDIZED (DETAILS)

WELL FRACTURED (DETAILS) **1000 Bbls. gelled water, 25000# Sand, 1500 Gal. Mud acid.**

RESULT AFTER TREATMENT (Initial open Flow or bbls.) **25.5 MMCF 25,500 MCF6PD 25,500, etc.**

ROCK PRESSURE AFTER TREATMENT **1823** HOURS

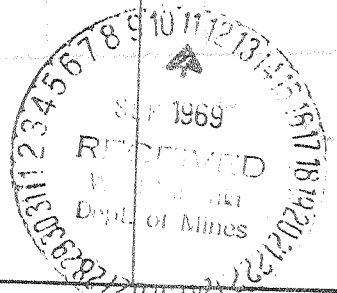
Fresh Water Feet Salt Water Feet

Producing Sand **Newburg** Depth

| Casing and Tubing  | Used in Drilling | Left in Well | Packers        |
|--------------------|------------------|--------------|----------------|
| Size               |                  |              |                |
| <del>20"</del> 20" | 21'              | 21'          | Kind of Packer |
|                    | 58'              | 58'          | Size of        |
| 8 1/4" - 5/8"      | 1826.35          | 1826.35      | Depth set      |
| 6 3/4"             |                  |              |                |
| 5 3/16"            | 5335'            | 5335'        |                |
| 4 1/2"             |                  |              |                |
| 3"                 |                  |              | Perf. top      |
| 2"                 |                  |              | Perf. bottom   |
| Liners Used        |                  |              | Perf. top      |
|                    |                  |              | Perf. bottom   |

Attach copy of cementing record.  
CASING CEMENTED SIZE No. Ft. Date  
Amount of cement used (bags)  
Name of Service Co.  
COAL WAS ENCOUNTERED AT FEET INCHES  
FEET INCHES FEET INCHES  
FEET INCHES FEET INCHES

| Formation   | Color | Hard or Soft | Top  | Bottom | Oil, Gas or Water | Depth | Remarks |
|---|-------|--------------|------|--------|-------------------|-------|---------|
| LITHOLOGY BASED ON DRILLERS LOGS UNLESS INDICATED |       |              |      |        |                   |       |         |
| Sand & Shale                                      |       |              | 0    | 1150   |                   |       |         |
| Sand  |       |              | 1150 | 1555   |                   |       |         |
| Little Lime                                       |       |              | 1555 | 1580   | (Samples)         |       |         |
| Big Lime  |       |              | 1580 | 1720   | (Samples)         |       |         |
| Big Injun   |       |              | 1720 | 1750   |                   |       |         |
| Berea   |       |              | 1750 | 1780   |                   |       |         |
| Sand  |       |              | 1780 | 2201   |                   |       |         |
| Shale   |       |              | 2201 | 2213   |                   |       |         |
| Sand & Shale                                      |       |              | 2213 | 4660   |                   |       |         |



| Formation   | Color | Hard or Soft | Top $\delta$ | Bottom | Oil, Gas or Water | Depth Found | Remarks |
|-------------|-------|--------------|--------------|--------|-------------------|-------------|---------|
| Onondaga    |       |              | 4660         | 4752   | (Samples)         |             |         |
| Oriskany    |       |              | 4752         | 4784   |                   |             |         |
| Limestone   |       |              | 4784         | 5500   |                   |             |         |
| Newburg     |       |              | 5500         | 5503   |                   |             |         |
| TOTAL DEPTH |       |              | 5503'        |        |                   |             |         |
|             |       |              |              |        | 5500              | 5500        |         |
|             |       |              |              |        | 4752              | 648         |         |
|             |       |              |              |        | <u>748</u>        | <u>4859</u> |         |

Date September 2, 19 69

APPROVED PATRICK OIL & GAS CORPORATION, Owner

By Donald C. Supcoe

(Title)

Donald C. Supcoe