

WW-7  
8-30-06



West Virginia Department of Environmental Protection  
Office of Oil and Gas

WELL LOCATION FORM: GPS

API: 47-039-02404 WELL NO.: MOLES

FARM NAME: ERMA MOLES

RESPONSIBLE PARTY NAME: EXCO RESOURCES (PA), LLC

COUNTY: KANAWHA DISTRICT: ELK

QUADRANGLE: CLENDENIN

SURFACE OWNER: THOMAS LIVINGSTON

ROYALTY OWNER: PHYLLIS ROWE ET AL

UTM GPS NORTHING: 4257878

UTM GPS EASTING: 459435 GPS ELEVATION: 906'

The Responsible Party named above has chosen to submit GPS coordinates in lieu of preparing a new well location plat for a plugging permit or assigned API number on the above well. The Office of Oil and Gas will not accept GPS coordinates that do not meet the following requirements:

1. Datum: NAD 1983, Zone: 17 North, Coordinate Units: meters, Altitude: height above mean sea level (MSL) – meters.
2. Accuracy to Datum – 3.05 meters
3. Data Collection Method:

Survey grade GPS  : Post Processed Differential

Real-Time Differential

Mapping Grade GPS  : Post Processed Differential

Real-Time Differential

Received

AUG 24 2015

Office of Oil and Gas  
WV Dept. of Environmental Protection

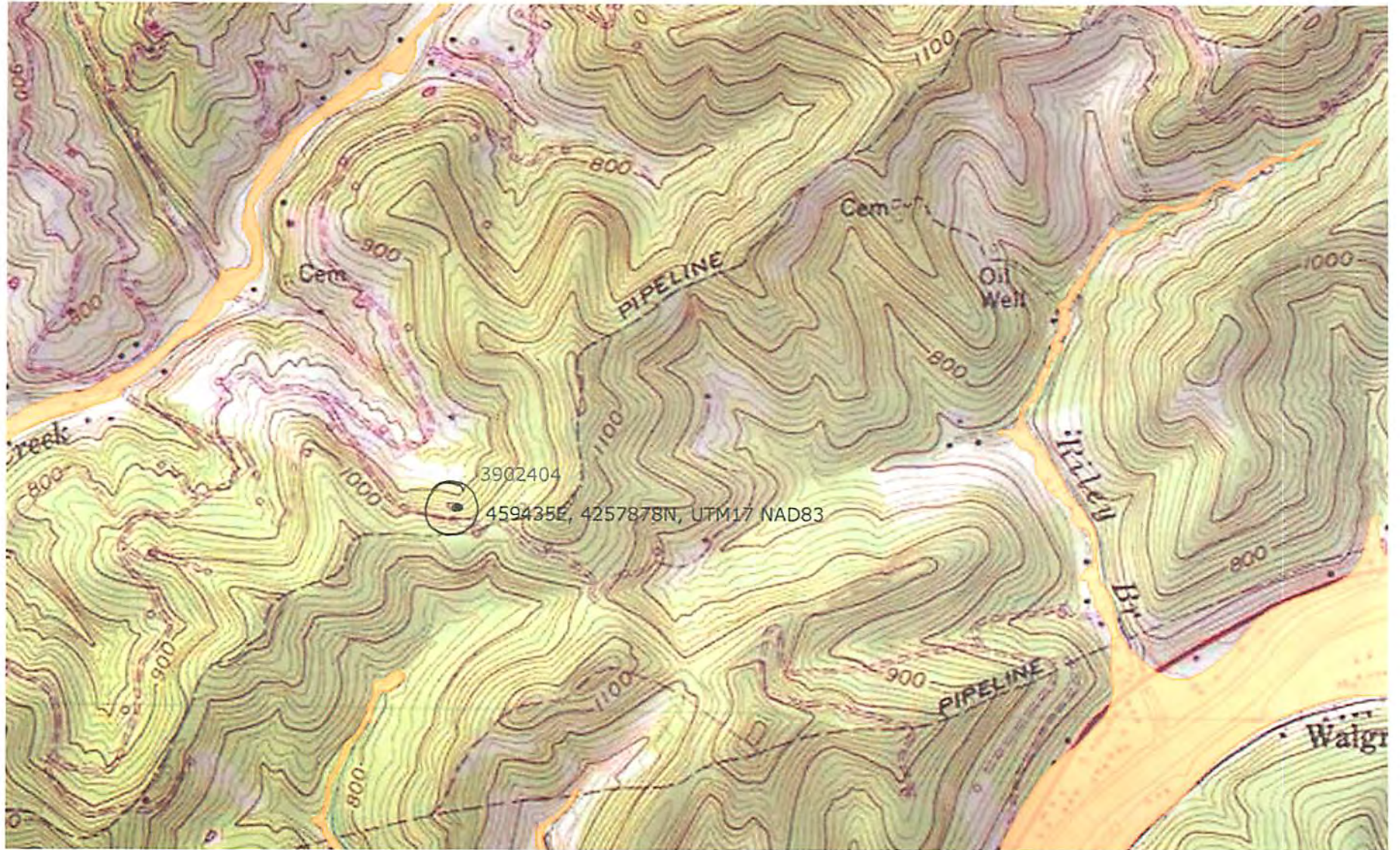
4. Letter size copy of the topography map showing the well location.

I the undersigned, hereby certify this data is correct to the best of my knowledge and belief and shows all the information required by law and the regulations issued and prescribed by the Office of Oil and Gas.

Miba Seabrook  
Signature

Surface Landman  
Title

8/24/15  
Date



3902404 P