

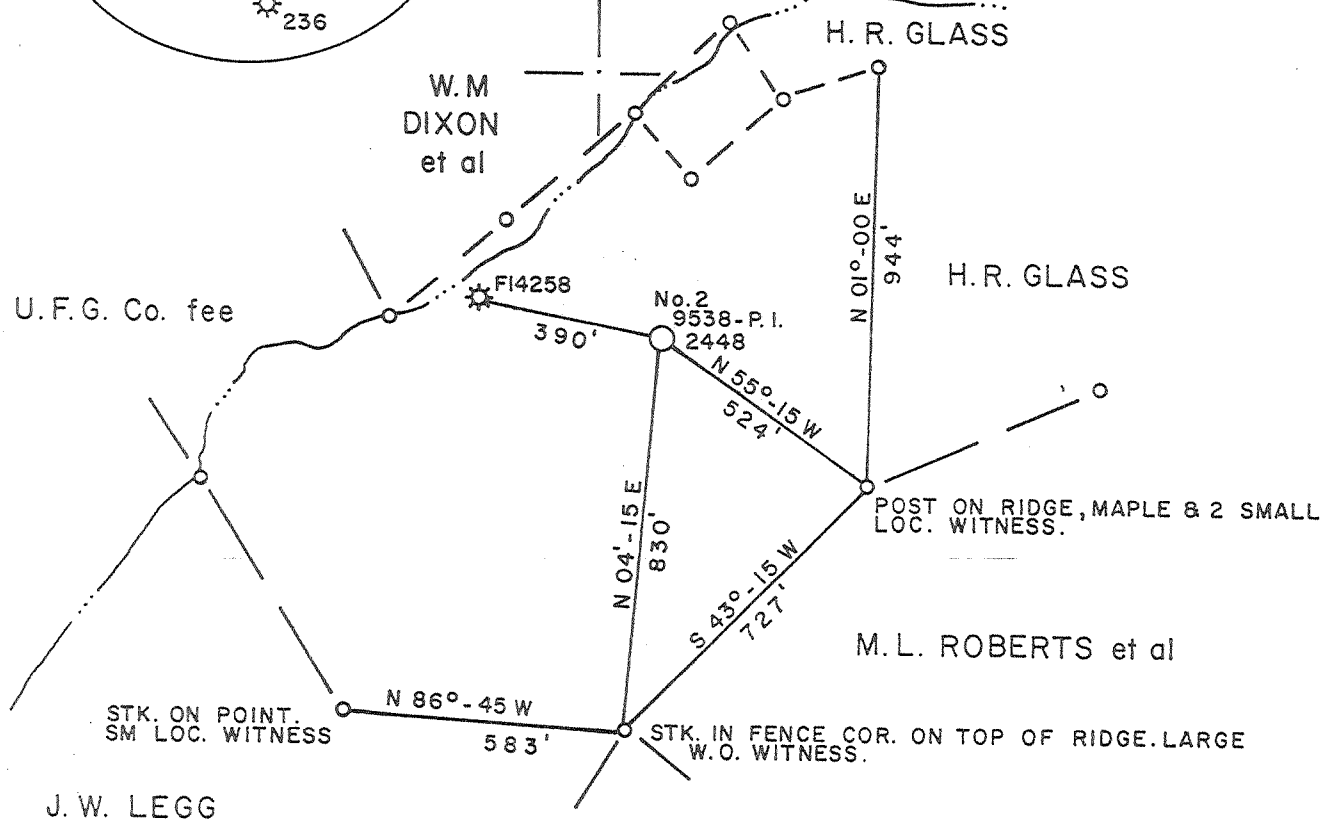
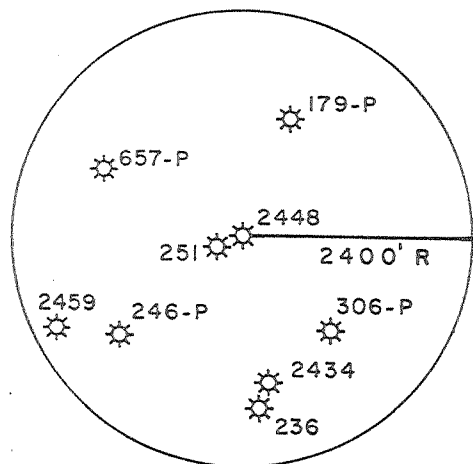
7805'

LATITUDE 38°-32'-30

LONGITUDE 81°-32'-30

5960'

NORTH



NOTE: NO ACTUAL SURVEY WAS MADE IN SEPT. 1998, THIS PLAT IS FOR D.E.P. PERMIT PURPOSES ONLY.

FILE NO. \_\_\_\_\_  
 DRAWING NO. \_\_\_\_\_  
 SCALE 1" = 400'  
 MINIMUM DEGREE OF ACCURACY 1 in 200  
 PROVEN SOURCE OF ELEVATION USGS DISK C-97-1956. ELEV = 630.00'. SISSONVILLE Jr. HIGH.

I THE UNDERSIGNED, HEREBY CERTIFY THAT THIS PLAT IS CORRECT TO THE BEST OF MY KNOWLEDGE AND BELIEF AND SHOWS ALL THE INFORMATION REQUIRED BY LAW AND THE REGULATIONS ISSUED AND PRESCRIBED BY THE DEPARTMENT OF MINES.  
 (SIGNED) \_\_\_\_\_  
 R.P.E. \_\_\_\_\_ L.L.S. \_\_\_\_\_

PLACE SEAL HERE

WEST VIRGINIA  
 DIVISION OF ENVIRONMENTAL PROTECTION  
 OFFICE OF OIL AND GAS  
 #10 McJUNKIN ROAD  
 NITRO, WEST VIRGINIA 25143-2506



DATE 9-22, 19 98  
 OPERATOR'S WELL NO. 9538-P.I.  
 API WELL NO. No. 2  
 47 - 039 - 02448 F  
 STATE COUNTY PERMIT

WELL TYPE: OIL \_\_\_ GAS  LIQUID INJECTION \_\_\_ WASTE DISPOSAL \_\_\_  
 (IF "GAS", PRODUCTION  STORAGE \_\_\_ DEEP \_\_\_ SHALLOW \_\_\_)  
 LOCATION: ELEVATION 833.76' WATER SHED BOARDTREE OF REED BRANCH  
 DISTRICT POCA COUNTY KANAWHA  
 QUADRANGLE ROMANCE

SURFACE OWNER S. A. GIFFITH et al ACREAGE 299.94  
 OIL & GAS ROYALTY OWNER S. A. GIFFITH et al LEASE ACREAGE 299.94  
 LEASE NO. \_\_\_\_\_

PROPOSED WORK: DRILL \_\_\_ CONVERT \_\_\_ DRILL DEEPER \_\_\_ REDRILL \_\_\_ FRACTURE OR STIMULATE \_\_\_ PLUG OFF OLD FORMATION \_\_\_ PERFORATE NEW FORMATION  OTHER PHYSICAL CHANGE IN WELL (SPECIFY) \_\_\_\_\_

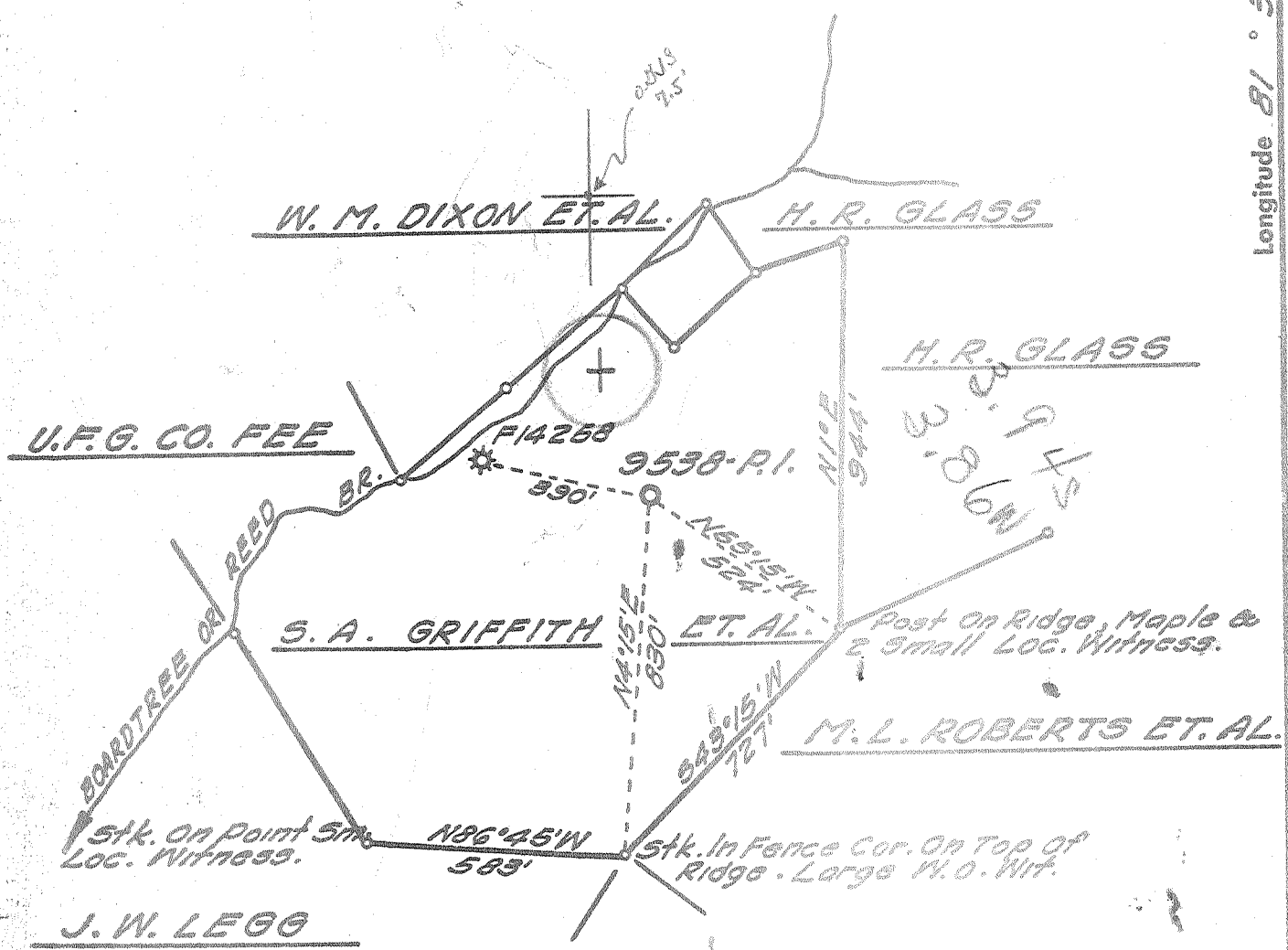
PLUG AND ABANDON \_\_\_ CLEAN OUT AND REPLUG \_\_\_  
 TARGET FORMATION Brown shale for skony ESTIMATED DEPTH 4800'  
 WELL OPERATOR VIKING ENERGY CORP. DESIGNATED AGENT MICHAEL PINKERTON  
 ADDRESS P.O. BOX 13366 ADDRESS SAME  
SISSONVILLE, WV 25360 ADDRESS SAME

KAN 2442 E

Latitude 38° 35'

Longitude 81° 30'

OMNS 7.5' loc 15'  
 38° 32' 30" 1.125 4.005  
 81° 32' 30" 1.470 3.740



BENCH MARK DESCRIPTION

U.S.G.S. Standard Disk Stamped C-97-1956 In North Side of Sissonville Jr. High School Gym. Elev. 630.00'

DEGREE OF ACCURACY: One Part In 200

- Fracture Before 6/5/29
- New Location
- Drill Deeper
- Redrill
- Abandonment

I, the undersigned, hereby certify that this map is correct to the best of my knowledge and belief and shows all the information required by Paragraph 5 of the Rules and Regulations of the Oil and Gas Section of the Mining Laws of West Virginia.  
 The accuracy of this survey is within the limits and as prescribed in Paragraph 5 by the Oil and Gas Division of the Department of Mines Regulations.

Company UNITED FUEL GAS CO.  
 Address CHARLESTON, W. VA.  
 Farm S.A. GRIFFITH ET AL.  
 Tract \_\_\_\_\_ Acres 299.94 Lease No. \_\_\_\_\_  
 Well (Farm) No. 2 Serial No. 9538-P.I.  
 Elevation (Spirit Level) 833.76'  
 Quadrangle KENNA 56  
 County KANAWHA District POCA  
 Engineer Adrian F. Anderson  
 Engineer's Registration No. 2330  
 File No. 64-71 Drawing No. \_\_\_\_\_  
 Date NOV. 25, '69 Scale 1" = 400'

STATE OF WEST VIRGINIA  
 DEPARTMENT OF MINES  
 OIL AND GAS DIVISION  
 CHARLESTON

WELL LOCATION MAP  
 FILE NO. KAN-2448

+ Denotes location of well on United States Topographic Maps, scale 1 to 62,500 latitude and longitude lines being represented by border lines as shown.

- Denotes one inch spaces on border line of original tracing.

Deep Well (Newburg)

Spartan Gas Co. 19.6506%  
 Cities Service Oil Co. 3.6674%  
 UFG Co. 2.6672%  
 Allen Beard 3.2606%

Map Square 64-71

RECEIVED

FEB 10 1970



OIL & GAS DIVISION  
 DEPT. OF MINES

STATE OF WEST VIRGINIA  
 DEPARTMENT OF MINES  
 OIL AND GAS DIVISION

Rotary   
 Spudder   
 Cable Tools   
 Storage  E. NOLL

WELL RECORD

Oil or Gas Well Gas (KIND)

Kennd  
 Quadrangle (Sissonville)  
 Permit No. Kan.-2448

Company United Fuel Gas Company  
 Address P.O. Box 1273, Charleston, W. Va.  
 Farm S.A. Griffith ET AL Acres 299.94  
 Location (waters) Grapevine Creek 833.76GL  
 Well No. 9538 PI Elev. 833.91KB  
 District Poca County Kanawha  
 The surface of tract is owned in fee by \_\_\_\_\_  
 Address \_\_\_\_\_  
 Mineral rights are owned by \_\_\_\_\_  
 Address \_\_\_\_\_  
 Drilling commenced 12-7-69  
 Drilling completed 12-16-69  
 Date Shot Not Shot From \_\_\_\_\_ To \_\_\_\_\_  
 With \_\_\_\_\_  
 Open Flow 10 /10ths Water in \_\_\_\_\_ Inch  
10 /10ths Merc. in \_\_\_\_\_ Inch  
 Volume 10 MM Cu. Ft.  
 Rock Pressure \_\_\_\_\_ lbs \_\_\_\_\_ hrs.  
 Oil \_\_\_\_\_ bbls., 1st 24 hrs.  
 WELL ACIDIZED (DETAILS) \_\_\_\_\_  
 WELL FRACTURED (DETAILS) Mud 1000 Gallons 1000# Pressure Fill Up 8000 Gallons 2300# Pressure  
Treating 16,000 Gallons 4550# Pressure Over Flush 8600 Gallons 4800# Pressure  
 RESULT AFTER TREATMENT (Initial open Flow or bbls.) 24,498 MMCF 24,498 MCF/GPD 24,498,000  
 ROCK PRESSURE AFTER TREATMENT 1790 HOURS  
 Fresh Water 100 Feet Salt Water 1150 Feet  
 Producing Sand Newburg Depth 5740

Casing and Tubing	Used in Drilling	Left in Well	Packers
Size			Kind of Packer
16			
13	200'	200'	
10 9"	1850'	1850'	Size of
8 1/2"	5775'	5775'	Depth set
6 3/4"			
5 3/16"			
4 1/2"			
3"			Perf. top
2"	5850'	5850'	Perf. bottom
Liners Used			Perf. top
			Perf. bottom

Attach copy of cementing record.  
 CASING CEMENTED 7" SIZE 5700 No. Ft. \_\_\_\_\_ Date \_\_\_\_\_  
 Amount of cement used (bags) 150  
 Name of Service Co. Halliburton  
 COAL WAS ENCOUNTERED AT \_\_\_\_\_ FEET \_\_\_\_\_ INCHES  
 \_\_\_\_\_ FEET \_\_\_\_\_ INCHES FEET \_\_\_\_\_ INCHES  
 \_\_\_\_\_ FEET \_\_\_\_\_ INCHES FEET \_\_\_\_\_ INCHES  
 WELL FRACTURED (DETAILS) Mud 1000 Gallons 1000# Pressure Fill Up 8000 Gallons 2300# Pressure  
Treating 16,000 Gallons 4550# Pressure Over Flush 8600 Gallons 4800# Pressure  
 RESULT AFTER TREATMENT (Initial open Flow or bbls.) 24,498 MMCF 24,498 MCF/GPD 24,498,000  
 ROCK PRESSURE AFTER TREATMENT 1790 HOURS  
 Fresh Water 100 Feet Salt Water 1150 Feet  
 Producing Sand Newburg Depth 5740

Formation	Color	Hard or Soft	Top	Bottom	Oil, Gas or Water	Depth	Remarks
Sh. & Red Rock			0	90			
Sd.			90	105	Damp @ 100'		
Sh. & Red Rock			105	150			
Sdy. Sh.			150	190			
Sh.			190	220	Water @ 220'		
Sd.			220	235			
Sh. & Red Rock			235	800			
Sdy. Lime			800	1150	5724	5724	
Salt Sd.			1150	1550	4955	834	
Big Lime			1550	1710			
Injun Sand			1710	1760			
Shale			1760	4835	769	4870	
Corn. Lime			4835	4955			
Oris. Sand			4955	4990			
Lime & Dolo.			4990	5724			
Newburg			5724	5740			
Total Depth				5740			

Test before fracturing: 10MMCF  
 Final Open Flow: 24,498 MMCF (Side Static Test) Shut in 7" casing 12-16-69  
 Casing Points:  
 13-3/8" - 213' - 175 Bags Cement  
 9-5/8" - 1836' - 600 Bags Cement  
 7" - 5700' - 150 Bags Cement  
 No Logs Run

FEB 23 1970

State of West Virginia  
Division of Environmental Protection  
Section of Oil and Gas

Well Operator's Report of Well Work

Farm name: CROUCH, ROBERT

Operator Well No.: GRIFFITH #2

LOCATION: Elevation: 833.00      Quadrangle: ROMANCE

District: POCA      County: KANAWHA  
Latitude: 5960 Feet South of 38 Deg. 32Min. 30 Sec.  
Longitude 7805 Feet West of 81 Deg. 32 Min. 30 Sec.

Company: VIKING ENERGY CORPORATION  
P. O. BOX 13366  
SISSONVILLE, WV 25360-0000

Agent: MICHAEL PINKERTON

Inspector: CARLOS HIVELEY  
Permit Issued: 10/01/98  
Well work Commenced: 10-3-98  
Well work Completed: 1-30-99

Verbal Plugging \_\_\_\_\_  
Permission granted on: \_\_\_\_\_  
Rotary \_\_\_\_\_ Cable \_\_\_\_\_ Rig \_\_\_\_\_

Total Depth (feet) \_\_\_\_\_  
Fresh water depths (ft) Well

Salt water depths (ft) Record

Is coal being mined in area (Y/N)? (N)  
Coal Depths (ft): N/A

Casing & Tubing Size	Used in Drilling	Left in Well	Cement Fill Up Cu. Ft.
13 3/8	209	209	100 sacks
9 5/8	1826	1826	600 sacks
7 "	5745	5745	175 sacks

OPEN FLOW DATA

Producing formation Oriskany - Orandaga? Pay zone depth (ft) 4900'  
Gas: Initial open flow 5 MCF/d Oil: Initial open flow \_\_\_\_\_ Bbl/d  
Final open flow 5 MCF/d Final open flow \_\_\_\_\_ Bbl/d  
Time of open flow between initial and final tests \_\_\_\_\_ Hours  
Static rock Pressure 30 psig (surface pressure) after 24 Hours

Second producing formation \_\_\_\_\_ Pay zone depth (ft) \_\_\_\_\_  
Gas: Initial open flow \_\_\_\_\_ MCF/d Oil: Initial open flow \_\_\_\_\_ Bbl/d  
Final open flow \_\_\_\_\_ MCF/d Final open flow \_\_\_\_\_ Bbl/d  
Time of open flow between initial and final tests \_\_\_\_\_ Hours  
Static rock Pressure \_\_\_\_\_ psig (surface pressure) after \_\_\_\_\_ Hours

NOTE: ON BACK OF THIS FORM PUT THE FOLLOWING: 1). DETAILS OF PERFORATED INTERVALS, FRACTURING OR STIMULATING, PHYSICAL CHANGE, ETC. 2). THE WELL LOG WHICH IS A SYSTEMATIC DETAILED GEOLOGICAL RECORD OF ALL FORMATIONS, INCLUDING COAL ENCOUNTERED BY THE WELLBORE.

For: Viking Energy Corp  
VIKING ENERGY CORPORATION

By: Michael Pinkerton  
Date: 4-27-06

MAY 12 2006

KAN 2447 F

Plat missing - 6-6 (312)