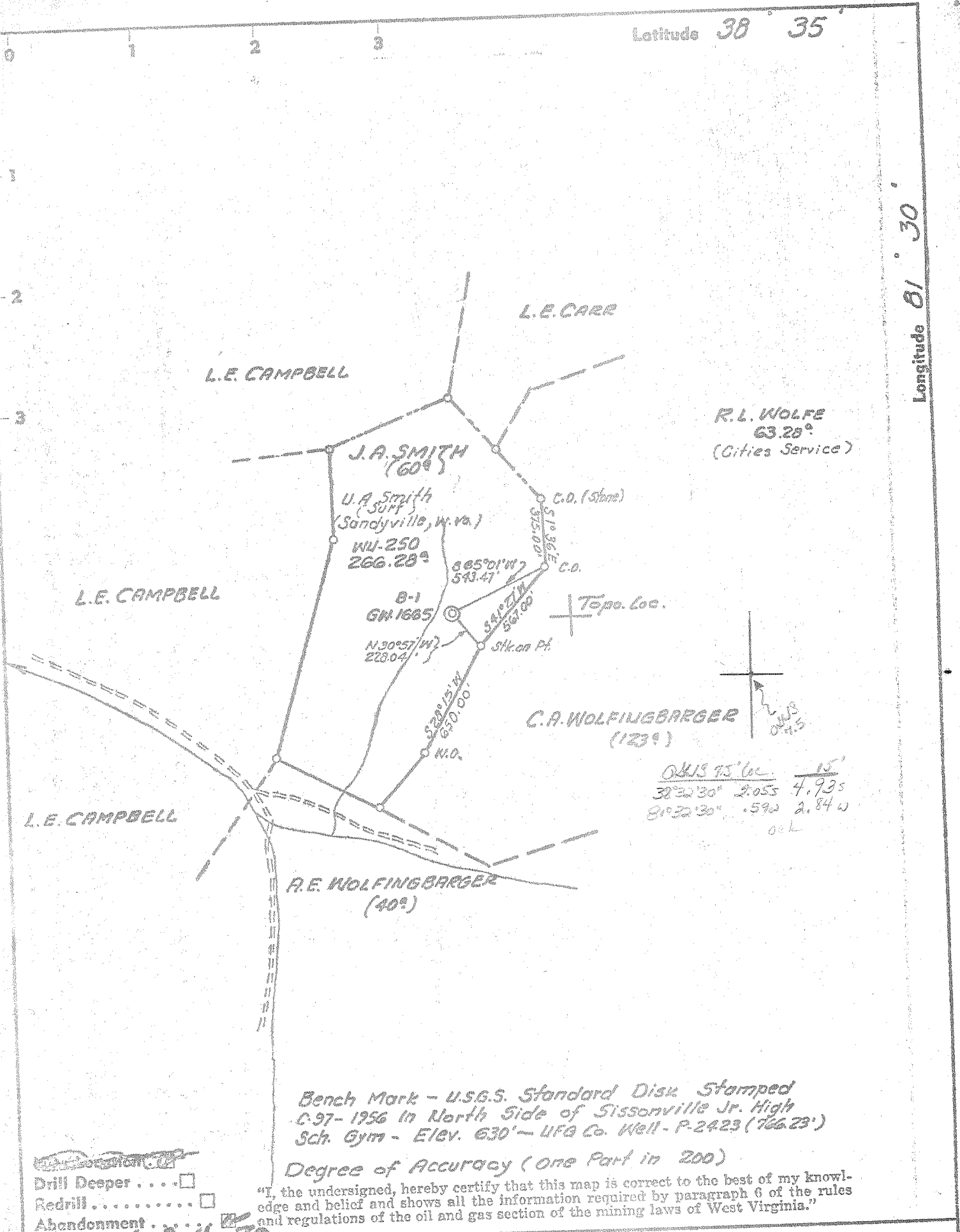


Latitude 38 35

Longitude 81 30



0.813 75' W. 15'	
38° 32' 30"	2.055 4.935
81° 32' 30"	.592 2.84 W

o.c.l.

Bench Mark - U.S.G.S. Standard Disk Stamped  
C-97-1956 in North Side of Sissonville Jr. High  
Sch. Gym - Elev. 630' - UFG Co. Well - P-2423 (766.23')

Degree of Accuracy (One Part in 200)

"I, the undersigned, hereby certify that this map is correct to the best of my knowledge and belief and shows all the information required by paragraph 6 of the rules and regulations of the oil and gas section of the mining laws of West Virginia."

- Drill Desper
  - Redrill
  - Abandonment
- Estimated 2:4:70

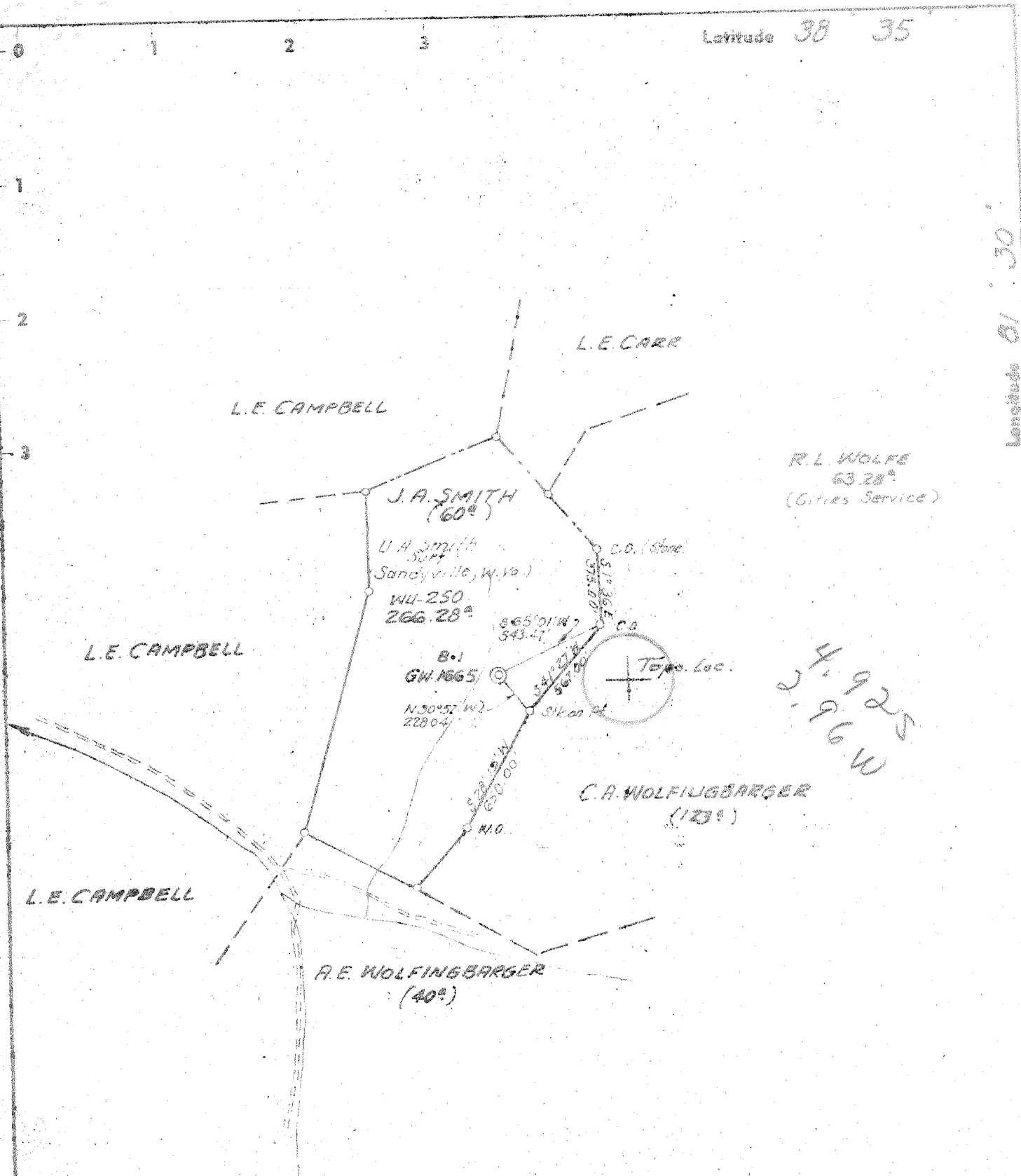
Company CITIES SERVICE OIL COMPANY  
 Address Box 873 CHARLESTON, W.VA.  
 Farm JAMES A. SMITH et al (CONSOL)  
 Tract Acres 60 Lease No. WU-250  
 Well (Farm) No. B-1 Serial No. GN-1685  
 Elevation (Spirit Level) 390.02  
 Quadrangle KENNA SE  
 County KANAWHA District POCA  
 Engineer Wendell S. Moore  
 Engineer's Registration No. 2113  
 File No. \_\_\_\_\_ Drawing No. W-13-69  
 Date DEC. 29, 1969 Scale 1" = 660'

STATE OF WEST VIRGINIA  
 DEPARTMENT OF MINES  
 OIL AND GAS DIVISION  
 CHARLESTON  
**WELL LOCATION MAP**  
 FILE NO. KAN-2453-P

+ Denotes location of well on United States Topographic Maps, scale 1 to 62,500, latitude and longitude lines being represented by border lines as shown.  
 - Denotes one inch spaces on border line of original tracing.

Latitude 38 35

Longitude 81 30



Bench Mark - U.S.G.S. Standard Disk Stamped  
 C-97-1956 in North Side of Sissonville Jr. High  
 Sch. Gym - Elev. 630' - UFG Co. Well - P-2423 (766.28')

- New Location
- Drill Deeper
- Redrill
- Abandonment

Degree of Accuracy (one Part in 200)

"I, the undersigned, hereby certify that this map is correct to the best of my knowledge and belief and shows all the information required by paragraph 6 of the rules and regulations of the oil and gas section of the mining laws of West Virginia."

Company CITIES SERVICE OIL COMPANY  
 Address Box 873 CHARLESTON, W. Va.  
 Farm JAMES A. SMITH et al (CONSOL.)  
 Tract \_\_\_\_\_ Acres 60 Lease No. WU-250  
 Well (Farm) No. B-1 Serial No. GW-1665  
 Elevation (Spirit Level) 938.02  
 Quadrangle KENNA 36  
 County KANAWHA District POCA  
 Engineer Wendell S. Moore  
 Engineer's Registration No. 2113  
 File No. \_\_\_\_\_ Drawing No. W-13-69  
 Date DEC. 29, 1969 Scale 1" = 660'

STATE OF WEST VIRGINIA  
 DEPARTMENT OF MINES  
 OIL AND GAS DIVISION  
 CHARLESTON

WELL LOCATION MAP  
 FILE NO. KAN-2453

Denotes location of well on United States Topographic Maps, scale 1 to 62,500, latitude and longitude lines being represented by border lines as shown.

Denotes one inch spaces on border line of original tracing.



STATE OF WEST VIRGINIA  
DEPARTMENT OF MINES  
OIL AND GAS WELLS DIVISION

Rotary   
Spudder   
Cable Tools   
Storage

Dry

Oil or Gas Well non prod.  
(KIND)

Quadrangle Kenna  
Permit No. Kan-2453

WELL RECORD

Company Cities Service Oil Company  
Address Box 873, Charleston, W. Va. 25323  
Farm James A. Smith, et al Acres 60  
Location (waters) \_\_\_\_\_  
Well No. B-1, GW-1665 Elev. 998.02  
District Poca County Kanawha  
The surface of tract is owned in fee by James A. Smith  
Address Sandyville, W. Va.  
Mineral rights are owned by James A. Smith, et al  
for further add. contact C. S. O. Co  
Address \_\_\_\_\_  
Drilling commenced 1-17-70  
Drilling completed 2-2-70  
Date Shot not shot From \_\_\_\_\_ To \_\_\_\_\_  
With \_\_\_\_\_  
Open Flow /10ths Water in \_\_\_\_\_ Inch  
/10ths Merc. in \_\_\_\_\_ Inch  
Volume \_\_\_\_\_ Cu. Ft.  
Rock Pressure \_\_\_\_\_ lbs. \_\_\_\_\_ hrs.  
Oil \_\_\_\_\_ bbls., 1st 24 hrs.  
WELL ACIDIZED (DETAILS) not acidized  
WELL FRACTURED (DETAILS) not fractured

Casing and Tubing	Used in Drilling depth set	Left in Well	Packers
Size			Kind of Packer
16			none
13 3/8" 48#	67'	all	Size of
10			Depth set
8 1/4" 24#	2026'	all	
6 5/8"			Perf. top
5 3/16" 17#	5854'	all	Perf. bottom
4 1/2"			Perf. top
3			Perf. bottom
2			Perf. top
Liners Used			Perf. bottom

Attach copy of cementing record.  
CASING CEMENTED \_\_\_\_\_ SIZE \_\_\_\_\_ No. Ft. \_\_\_\_\_ Date \_\_\_\_\_  
Amount of cement used (bags) see reverse side  
Name of Service Co. \_\_\_\_\_  
COAL WAS ENCOUNTERED AT none FEET \_\_\_\_\_ INCHES  
\_\_\_\_\_ FEET \_\_\_\_\_ INCHES FEET \_\_\_\_\_ INCHES  
\_\_\_\_\_ FEET \_\_\_\_\_ INCHES FEET \_\_\_\_\_ INCHES

RESULT AFTER TREATMENT (Initial open Flow or bbls.) well made salt water  
ROCK PRESSURE AFTER TREATMENT \_\_\_\_\_ HOURS \_\_\_\_\_  
Fresh Water \_\_\_\_\_ Feet \_\_\_\_\_ Salt Water 1325' Feet \_\_\_\_\_  
Producing Sand \_\_\_\_\_ Depth \_\_\_\_\_

Formation	Color	Hard or Soft	Top	Bottom	Oil, Gas or Water	Depth	Remarks
Little Lime			1825		S. Water	1325'	
Pencil Cave			1570				
Big Lime			1610				
Big Injune			1811	1850			
Onondaga			4989				
Oriskany Sand			5101		5904		
Heidersburg Lime			5142		5101		
Devonian				5310			
Tonolaway			5391				
Newburg			5904		803		
Total depth				5913'			

RECEIVED  
FEB 4 1970  
OIL & GAS DIVISION  
DEPT. OF MINES

Formation	Color	Hard or Soft	Top $\zeta$	Bottom	Oil, Gas or Water	Depth Found	Remarks
<u>Casing Record</u>							
1-17-70							Set and cemented 13-3/8" 48# B grade casing at 67' with 60 sacks of regular cement with 3% ca. cl.
1-24-70							Set and cemented 8-5/8" 24# K-55 new casing with 126 sacks of Pozmix followed by 223 sacks of regular cement with 2% ca. cl. Pumped 50 bbls. 6% gel with lost circulation material ahead of cement. Good circulation of gel and cement. Centralizers at 1983', 1843' and 1787'
1-29-70							Set and cemented 5-1/2" 17# J-55 new casing at 5854' with 148 sacks of regular cement followed by 35 sacks of Latex Cement. Pumped 250 bbls. of gel with loss circulation material ahead of cement. Good circulation of gel to surface while cementing. Insert at 5822'. Centralizers at 5822', 5726', 5629', 5536' and 5448'

Date Feb. 3, 19 70

APPROVED Cities Service Oil Company, Owner  
 By W. G. Mathews District Engr.  
 (Title)