

New Location
 Drill Deeper
 Abandonment
 8-28-70

Minimum Error of Closure 1 in 200
 Source of Elevation U.F.G. STORAGE Well Elev. 8240

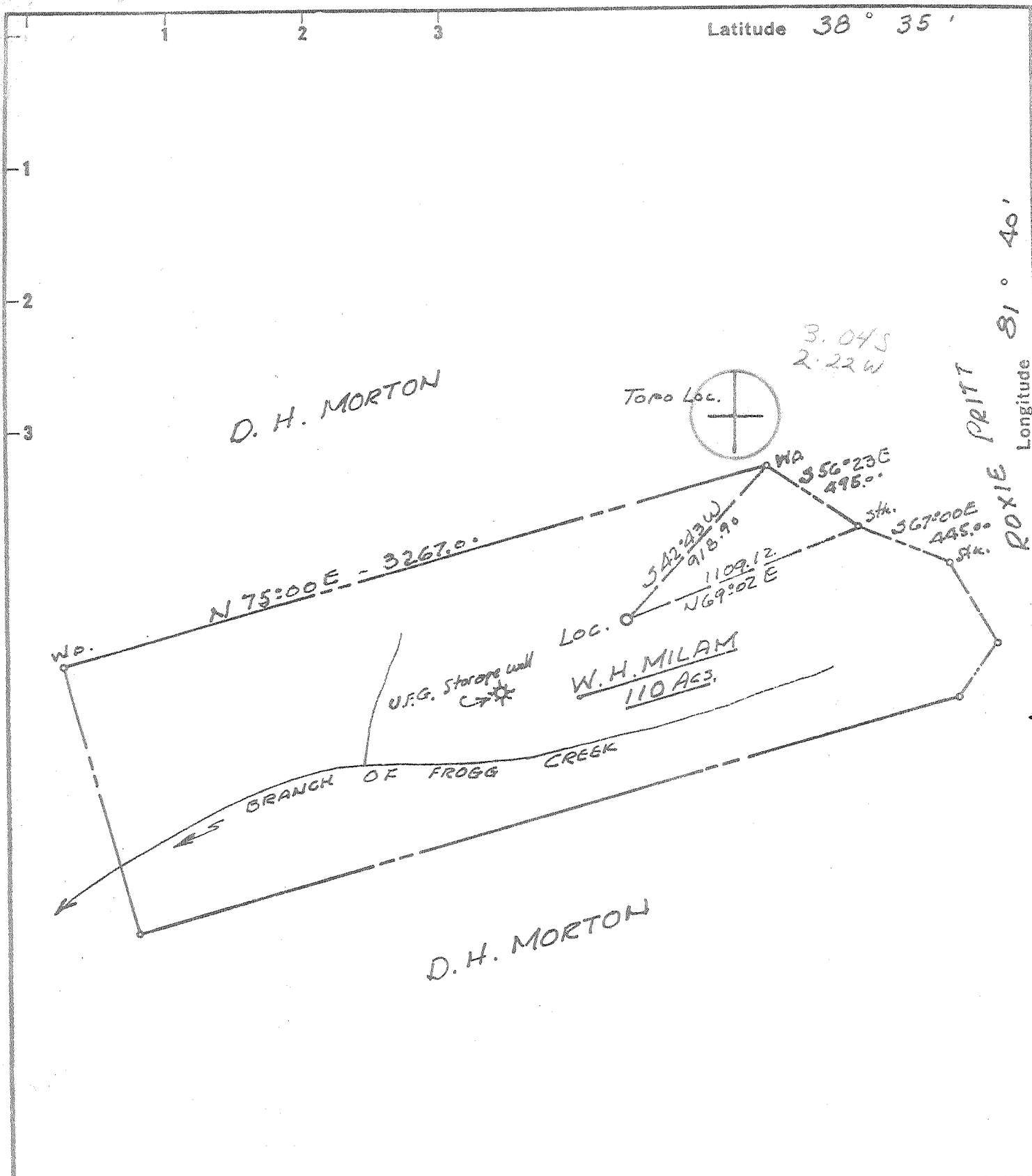
"I, the undersigned, hereby certify that this map is correct to the best of my knowledge and belief and shows all the information required by paragraph 6 of the rules and regulations of the oil and gas section of the mining laws of West Virginia."

Company PATRICK PETROLEUM
 Address COMMERCE SQUARE, CHARLESTON, W.Va.
 Farm W. H. MILAM
 Tract of 250 Unit Acres 110 Lease No. _____
 Well (Farm) No. 1 Serial No. _____
 Elevation (Spirit Level) 913.0
 Quadrangle KENNA SW Sissonville
 County KANAWHA District POCA
 Engineer N. L. Sifton
 Engineer's Registration No. 1832
 File No. _____ Drawing No. _____
 Date 8-9-70 Scale 1" = 600'

STATE OF WEST VIRGINIA
 DEPARTMENT OF MINES
 OIL AND GAS DIVISION
 CHARLESTON

WELL LOCATION MAP
 FILE NO. KAN-2475-P

+ Denotes location of well on United States Topographic Maps, scale 1 to 62,500 latitude and longitude lines being represented by border lines as shown.
 - Denotes one inch spaces on border line of original tracing.



New Location
 Drill Deeper
 Abandonment

Minimum Error of Closure 1 in 200
 Source of Elevation U.F.G. STORAGE Well Elev. 824.0

"I, the undersigned, hereby certify that this map is correct to the best of my knowledge and belief and shows all the information required by paragraph 6 of the rules and regulations of the oil and gas section of the mining laws of West Virginia."

Company PATRICK PETROLEUM
 Address COMMERCE SQUARE, CHARLESTON, W.VA.
 Farm W. H. MILAM
 Tract Acres 110 ± Lease No. _____
 Well (Farm) No. 1 Serial No. _____
 Elevation (Spirit Level) 913.0
 Quadrangle KENNA SW
 County KANAWHA District POCA
 Engineer T. L. Sefton
 Engineer's Registration No. 1832
 File No. _____ Drawing No. _____
 Date 8-9-70 Scale 1" = 600'

STATE OF WEST VIRGINIA
 DEPARTMENT OF MINES
 OIL AND GAS DIVISION
 CHARLESTON

WELL LOCATION MAP
 FILE NO. KAN-2475

+ Denotes location of well on United States Topographic Maps, scale 1 to 62,500 latitude and longitude lines being represented by border lines as shown.

- Denotes one inch spaces on border line of original tracing.

wo

6-0 Rocky Fork 312

Deep Well
(Newburg)

AUG 3-1 1970



STATE OF WEST VIRGINIA
DEPARTMENT OF MINES
OIL AND GAS DIVISION

Rotary
Spudder
Cable Tools
Storage

Quadrangle Kenna
Permit No. KAN-2475

WELL RECORD

Oil or Gas Well DRY
(KIND)

Company PATRICK PETROLEUM CORPORATION
Address Jackson, Michigan
Farm W. H. NILAM Acres 110
Location (waters) branch of Frogg Creek
Well No. One (1) Elev. 913.0'
District Poca County Kanawha
The surface of tract is owned in fee by W. H. Nilam
Address Sissonville, W. Va.
Mineral rights are owned by Same
Address Same
Drilling commenced 8-15-70
Drilling completed 8-27-70
Date Shot From To

Casing and Tubing	Used in Drilling	Left in Well	Packers
Size			Kind of Packer
16			
13-3/8"	65'	65'	
10			Size of
8 1/4-5/8"	2124'	2124'	
6%			Depth set
5 3/16-1/2"	5804'	(Pulled 4550')	
4 1/2"			Perf. top
3"			Perf. bottom
2"			Perf. top
Liners Used			Perf. bottom

Open Flow /10ths Water in Inch
/10ths Merc. in Inch
Volume Cu. Ft.
Rock Pressure lbs. hrs.
Oil bbls., 1st 24 hrs.
WELL ACIDIZED (DETAILS)
WELL FRACTURED (DETAILS)

Attach copy of cementing record.
CASING CEMENTED SIZE No. Ft. Date
Amount of cement used (bags)
Name of Service Co.
COAL WAS ENCOUNTERED AT FEET INCHES
FEET INCHES FEET INCHES
FEET INCHES FEET INCHES

RESULT AFTER TREATMENT (Initial open Flow or bbls.)

ROCK PRESSURE AFTER TREATMENT HOURS
Fresh Water Feet Salt Water Feet
Producing Sand Depth

Formation	Color	Hard or Soft	Top	Bottom	Oil, Gas or Water	Depth	Remarks
Sandstone			0	65			
Shale			65	1050	water	1050'	
Sand			1050	1865			
Lime			1865	2038			
Injun			2038	2068			
Shale			2068	4990			
Lime			4990	5080			
Sand			5080	5120			
Lime			5120	5834			
Newberg			5834	5840			
Lime	MEKZ		5840	5854			
TOTAL DEPTH				5854'			

RECEIVED
JAN 15 1971