

WW-7  
8-30-06



West Virginia Department of Environmental Protection  
Office of Oil and Gas  
**WELL LOCATION FORM: GPS**

API: 047-039-02726 WELL NO.: 67  
 FARM NAME: BLUE CREEK  
 RESPONSIBLE PARTY NAME: C.I. McKOWN & SON, INC.  
 COUNTY: KANAWHA DISTRICT: MALDEN  
 QUADRANGLE: QUICK 7.5'  
 SURFACE OWNER: BLUE EAGLE LAND, LLC  
 ROYALTY OWNER: RANGE RESOURCES - PINE MOUNTAIN INC.  
 UTM GPS NORTHING: 4,242,938 (NAD 83)  
 UTM GPS EASTING: 461,451 (NAD 83) GPS ELEVATION: 425 (1393')

The Responsible Party named above has chosen to submit GPS coordinates in lieu of preparing a new well location plat for a plugging permit or assigned API number on the above well. The Office of Oil and Gas will not accept GPS coordinates that do not meet the following requirements:

1. Datum: NAD 1983, Zone: 17 North, Coordinate Units: meters, Altitude: height above mean sea level (MSL) – meters.
2. Accuracy to Datum – 3.05 meters
3. Data Collection Method:

Survey grade GPS  : Post Processed Differential

Real-Time Differential

Mapping Grade GPS  : Post Processed Differential

Real-Time Differential

4. Letter size copy of the topography map showing the well location.

I the undersigned, hereby certify this data is correct to the best of my knowledge and belief and shows all the information required by law and the regulations issued and prescribed by the Office of Oil and Gas.

Signature

PRESIDENT

Title

4/11/14

Date

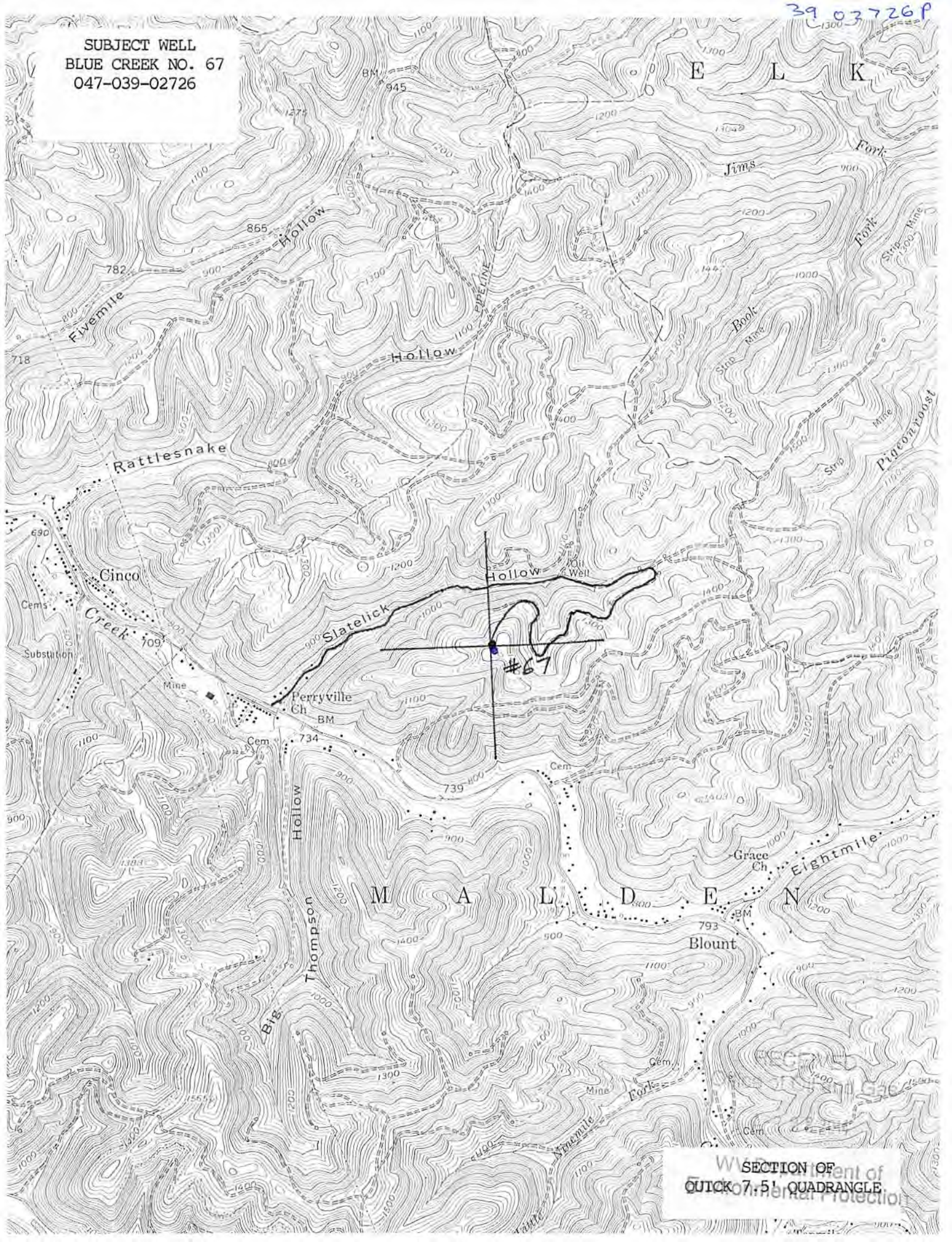
WV Department of  
Environmental Protection

RECEIVED  
Office of Oil and Gas



39 03726P

SUBJECT WELL  
BLUE CREEK NO. 67  
047-039-02726



SECTION OF  
QUICK 7.5 QUADRANGLE