

WW-7  
8-30-06



West Virginia Department of Environmental Protection  
Office of Oil and Gas  
WELL LOCATION FORM: GPS

API: 47-039-03899 WELL NO.: 416291 W.A. Bradford 1

FARM NAME: W.A. Bradford

RESPONSIBLE PARTY NAME: Alliance Petroleum Corporation, LLC

COUNTY: Kanawha DISTRICT: Loudon

QUADRANGLE: Belle

SURFACE OWNER: John W. Peal

ROYALTY OWNER: Orlandi Inc.

UTM GPS NORTHING: 449,430.89

UTM GPS EASTING: 4,229,910.8 GPS ELEVATION: 207.32 meters

The Responsible Party named above has chosen to submit GPS coordinates in lieu of preparing a new well location plat for a plugging permit or assigned API number on the above well. The Office of Oil and Gas will not accept GPS coordinates that do not meet the following requirements:

1. Datum: NAD 1983, Zone: 17 North, Coordinate Units: meters, Altitude: height above mean sea level (MSL) – meters.
2. Accuracy to Datum – 3.05 meters
3. Data Collection Method:

Survey grade GPS  : Post Processed Differential

Real-Time Differential

Mapping Grade GPS  : Post Processed Differential

Real-Time Differential

4. Letter size copy of the topography map showing the well location.

I the undersigned, hereby certify this data is correct to the best of my knowledge and belief and shows all the information required by law and the regulations issued and prescribed by the Office of Oil and Gas.

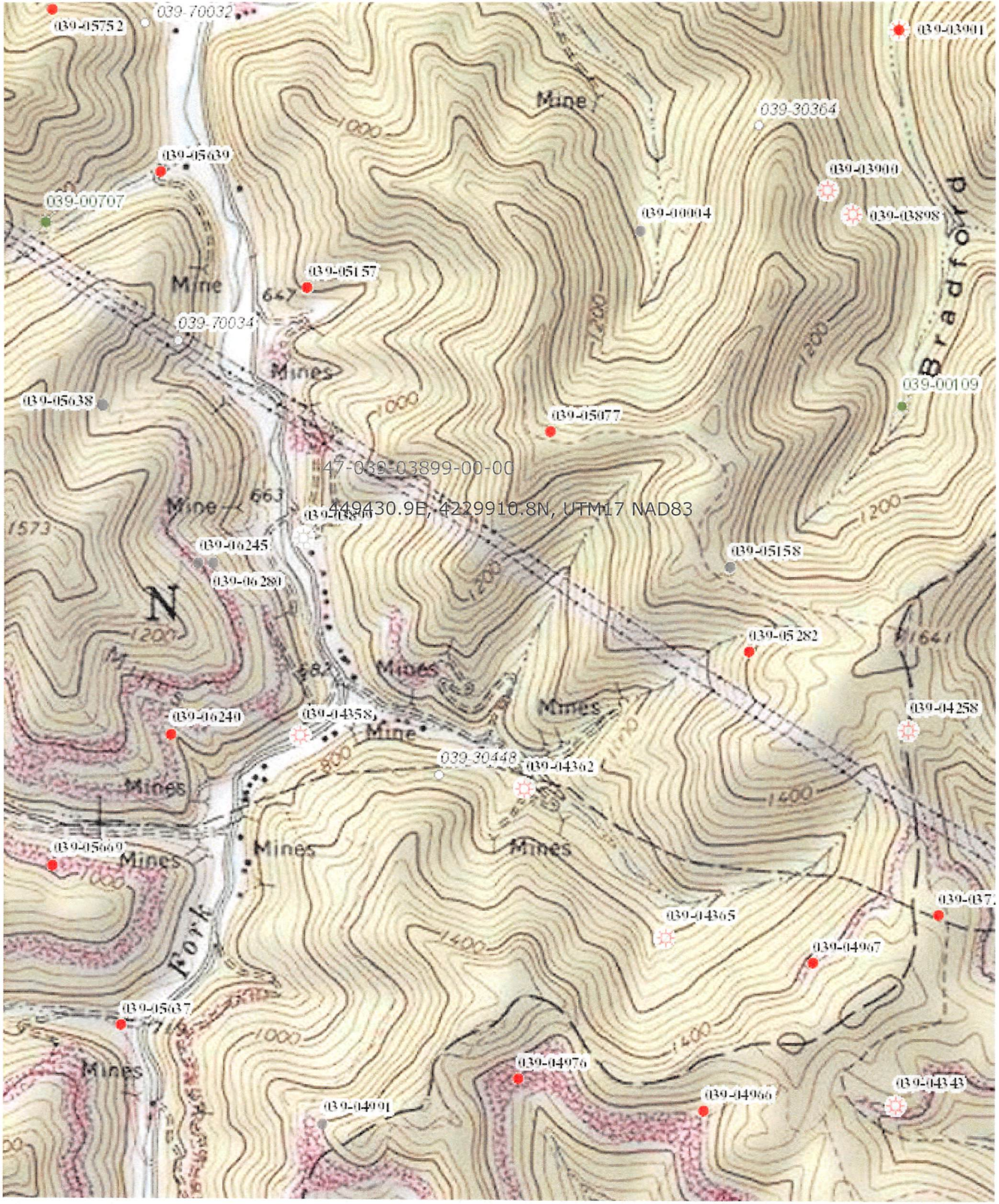
[Signature]  
Signature

Engineer III  
Title

8-20-19  
Date

RECEIVED  
Office of Oil and Gas  
AUG 27 2019  
WV Department of  
Environmental Protection

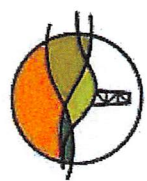








Sources: Esri, DigitalGlobe, GeoEye, Earthstar Geographics, CNES/Airbus DS, USDA, USGS, AeroGRID, IGN, and the GIS User Community



Diversified Gas & Oil Corporation  
 100 Diversified Way  
 Pikeville KY, 41051

416291

Plugging Map

RECEIVED  
 Office of Oil and Gas

AUG 27 2019

WV Department of Environmental Protection

**Legend**

- Well
- ✕ Sediment Control
- Access Road
- ▨ Pits
- Pad
- Public Roads

