



Diversified Gas & Oil Corporation
100 Diversified Way
Pikeville KY, 41051

47-039-04517

Well Plugging Map

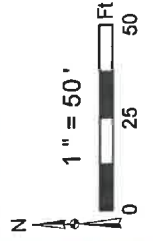
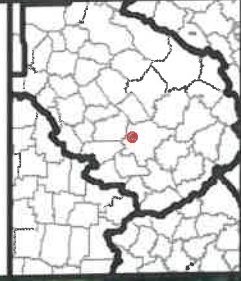
Legend

- Well
- ▨ Access Road
- ▨ Pits
- ▭ Pad
- Public Roads

RECEIVED
Office of Oil and Gas

AUG 9 2024

WV Department of
Environmental Protection



Well No.: 47-039-04517
 UTM 83-17, Meters
 North: 4259990.5
 East: 458927.47
 Elev.: 271.61 M
 Elev.: 890.89 Ft

Primary Pit
 Secondary Pit

64

Source: Esri, Maxar, Earthstar Geographics, and the IGN User Community



Diversified Gas & Oil Corporation
100 Diversified Way
Pikeville KY, 41051

47-039-04517

Well Plugging Map

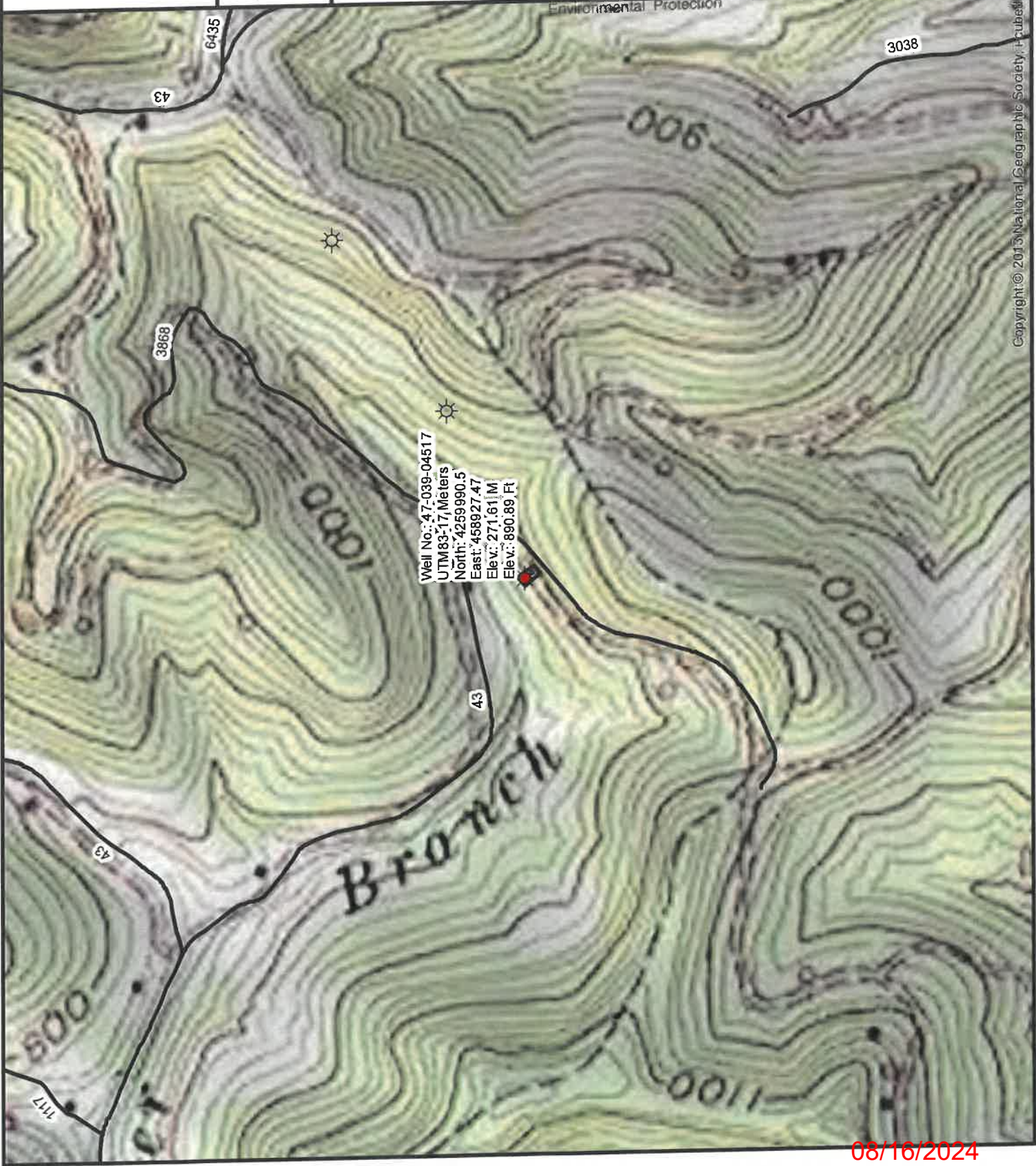
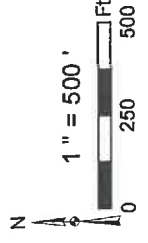
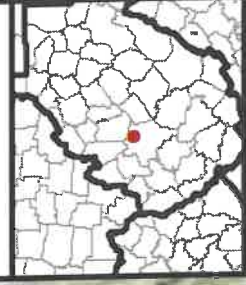
Legend

- Well
- Access Road
- Pits
- Pad
- Public Roads

RECEIVED
Office of Oil and Gas

AUG 9 2024

WV Department of
Environmental Protection



Copyright © 2015 National Geographic Society. All rights reserved.

4703904517P

WW-7
8-30-06



West Virginia Department of Environmental Protection
Office of Oil and Gas
WELL LOCATION FORM: GPS

API: 4703904517 WELL NO.: MEDLEY MACK JOAN A DUNBAR 3

FARM NAME: Medley

RESPONSIBLE PARTY NAME: Diversified Production, LLC

COUNTY: Kanawha DISTRICT: Elk

QUADRANGLE: ~~Glendenin 7.5'~~ BLUE CREEK RECEIVED
Office of Oil and Gas

SURFACE OWNER: Mack & Joan Medley AUG 9 2024

ROYALTY OWNER: See Attached WV Department of
Environmental Protection

UTM GPS NORTHING: 4259990.5

UTM GPS EASTING: 458927.47 GPS ELEVATION: 890.89'

The Responsible Party named above has chosen to submit GPS coordinates in lieu of preparing a new well location plat for a plugging permit or assigned API number on the above well. The Office of Oil and Gas will not accept GPS coordinates that do not meet the following requirements:

1. Datum: NAD 1983, Zone: 17 North, Coordinate Units: meters, Altitude: height above mean sea level (MSL) – meters.
2. Accuracy to Datum – 3.05 meters
3. Data Collection Method:
Survey grade GPS ____ : Post Processed Differential ____

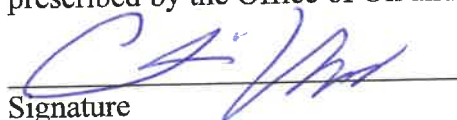
Real-Time Differential ____

Mapping Grade GPS X : Post Processed Differential X

Real-Time Differential ____

4. **Letter size copy of the topography map showing the well location.**

I the undersigned, hereby certify this data is correct to the best of my knowledge and belief and shows all the information required by law and the regulations issued and prescribed by the Office of Oil and Gas.


Signature

Chris Veazey - Director of Administration
Title

7/31/24
Date

08/16/2024