

WW-7  
8-30-06



West Virginia Department of Environmental Protection  
Office of Oil and Gas

**WELL LOCATION FORM: GPS**

API: 47-039-04691 WELL NO.: Clay/Berwind 77

FARM NAME: Carbon Fuel Co.

RESPONSIBLE PARTY NAME: Panther, LLC

COUNTY: Kanawha DISTRICT: Cabin Creek

QUADRANGLE: Belle Quandrangle

SURFACE OWNER: Regency Energy Partners, LP

ROYALTY OWNER: Regency Energy Partners, LP

UTM GPS NORTHING: 4222321.48

UTM GPS EASTING: 450023.25 GPS ELEVATION: 413.43 13561 FT

The Responsible Party named above has chosen to submit GPS coordinates in lieu of preparing a new well location plat for a plugging permit or assigned API number on the above well. The Office of Oil and Gas will not accept GPS coordinates that do not meet the following requirements:

- Datum: NAD 1983, Zone: 17 North, Coordinate Units: meters, Altitude: height above mean sea level (MSL) – meters.
- Accuracy to Datum – 3.05 meters
- Data Collection Method:

Survey grade GPS x : Post Processed Differential X

Real-Time Differential \_\_\_\_\_

Mapping Grade GPS \_\_\_\_\_ : Post Processed Differential \_\_\_\_\_

Real-Time Differential \_\_\_\_\_

- Letter size copy of the topography map showing the well location.**

I the undersigned, hereby certify this data is correct to the best of my knowledge and belief and shows all the information required by law and the regulations issued and prescribed by the Office of Oil and Gas.

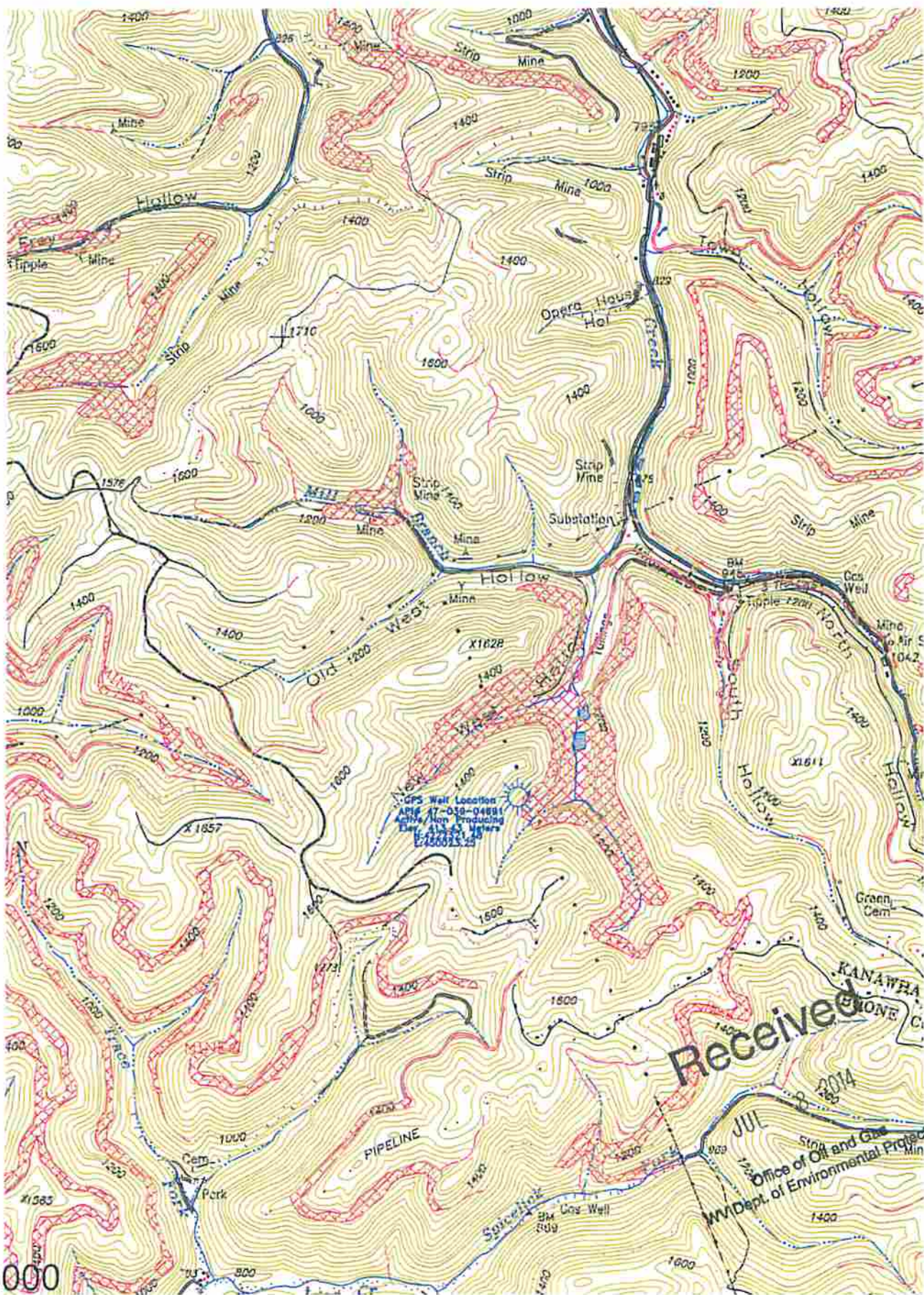
*Janet L. Ly*  
Signature

Engineering Manager  
Title

7/8/2014  
Date

Received  
JUL 8 2014  
Office of Oil and Gas  
WV Dept. of Environmental Protection





1:2000