



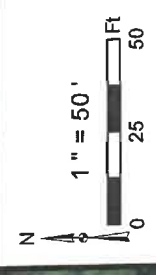
Diversified Gas & Oil Corporation  
100 Diversified Way  
Pikeville KY, 41051

47-039-04748  
Well Plugging Map

**Legend**

- Well
- Access Road
- Pits
- Pad
- Public Roads

RECEIVED  
Office of Oil and Gas  
**AUG 9 2024**  
WV Department of  
Environmental Protection



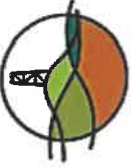
Well No.: 47-039-04748  
UTM83-17, Meters  
North: 4260083.24  
East: 459129.69  
Elev.: 306.17, M  
Elev.: 1004.25, Ft

Primary Pit  
Secondary Pit

Source: Esri, DeLorme, Earthstar Geographics, and the GIS User Community



4703904748P








Diversified Gas & Oil Corporation  
100 Diversified Way  
Pikeville KY, 41051

47-039-04748

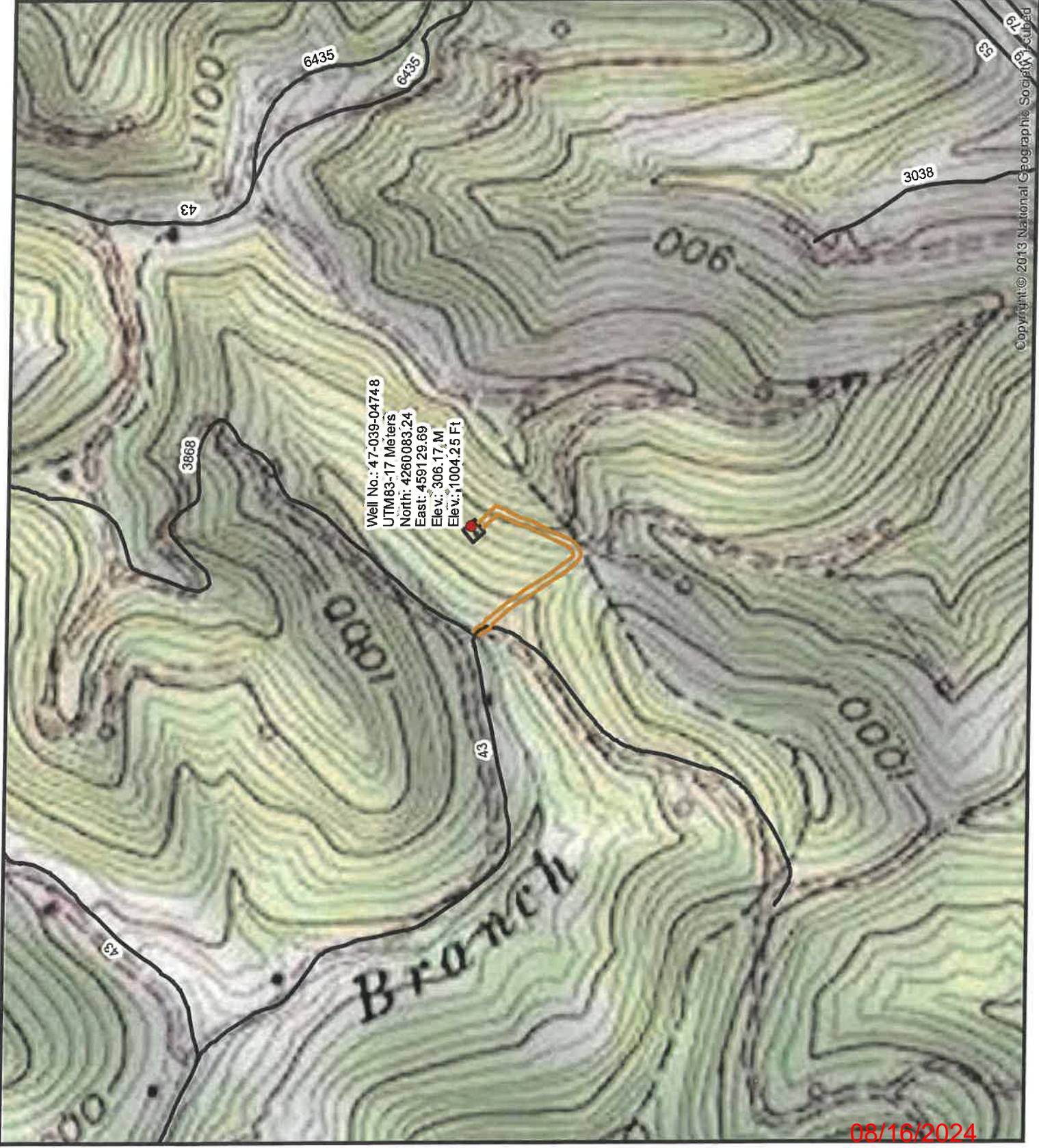
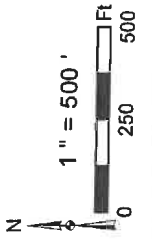
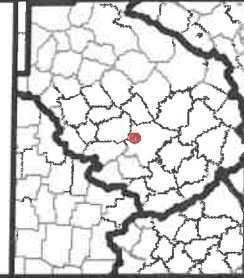
Well Plugging Map

**Legend**

-  Well
-  Access Road
-  Pits
-  Pad
-  Public Roads

RECEIVED  
Office of Oil and Gas

AUG 9 2024



Well No.: 47-039-04748  
 UTM83-17 Meters  
 North: 4260083.24  
 East: 459129.69  
 Elev.: 306.17 M  
 Elev.: 1004.25 Ft

Copyright © 2013 National Geographic Society. All rights reserved.

08/16/2024

WW-7  
8-30-06

4703904748P



West Virginia Department of Environmental Protection  
Office of Oil and Gas  
**WELL LOCATION FORM: GPS**

API: 4703904748 WELL NO.: MEDLEY MACK JOAN DUNBAR 4

FARM NAME: Medley

RESPONSIBLE PARTY NAME: Diversified Production, LLC

COUNTY: Kanawha DISTRICT: Elk

QUADRANGLE: ~~Glendenin 7.5'~~ BLUE CREEK 7.5'

SURFACE OWNER: Mack & Joan Medley

ROYALTY OWNER: See Attached

UTM GPS NORTHING: 4260083.24

UTM GPS EASTING: 459129.69 GPS ELEVATION: 1004.25'

The Responsible Party named above has chosen to submit GPS coordinates in lieu of preparing a new well location plat for a plugging permit or assigned API number on the above well. The Office of Oil and Gas will not accept GPS coordinates that do not meet the following requirements:

- Datum: NAD 1983, Zone: 17 North, Coordinate Units: meters, Altitude: height above mean sea level (MSL) – meters.
- Accuracy to Datum – 3.05 meters
- Data Collection Method:

Survey grade GPS  : Post Processed Differential

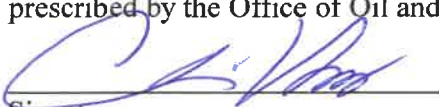
Real-Time Differential

Mapping Grade GPS  : Post Processed Differential

Real-Time Differential

- Letter size copy of the topography map showing the well location.

I the undersigned, hereby certify this data is correct to the best of my knowledge and belief and shows all the information required by law and the regulations issued and prescribed by the Office of Oil and Gas.

  
Signature

Chris Veazey - Director of Administration  
Title

7/31/24  
Date

RECEIVED  
Office of Oil and Gas

AUG 9 2024

WV Department of  
Environmental Protection

08/16/2024