

1475'

STATE PLANE CO-ORDINATES FOR THIS PROPOSED WELL SITE ARE:

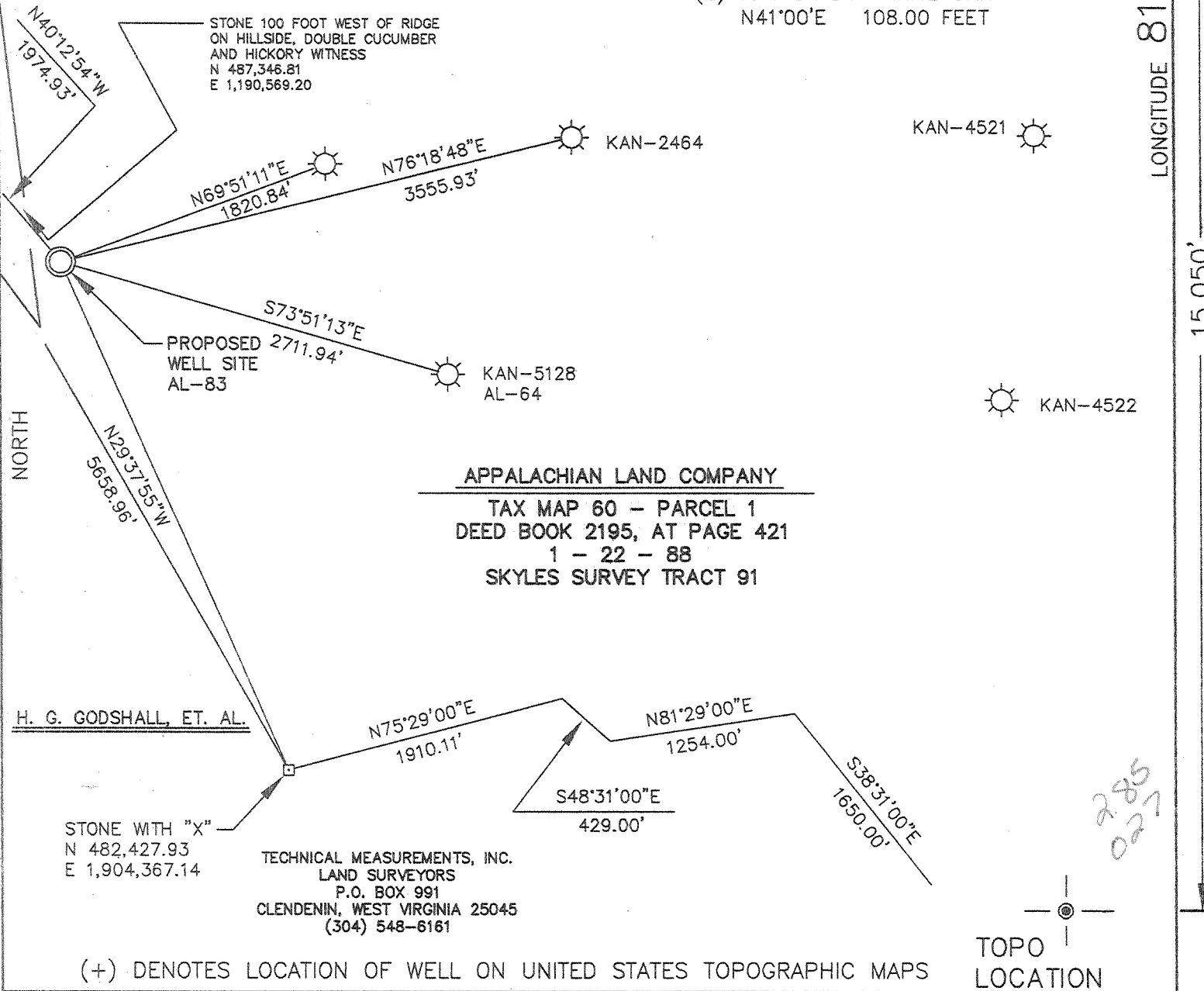
N 485,838.70  
E 1,902,844.33  
GPS DATE 2-10-98

LATITUDE 38°22'30"

LONGITUDE 81°20'00"

REFERENCE POINTS PROPOSED WELL TO:

- (1) 13 INCH DIA. RED OAK N9°00'E 109.00 FEET
- (2) 10 INCH DIA. WHITE OAK N41°00'E 108.00 FEET



(+) DENOTES LOCATION OF WELL ON UNITED STATES TOPOGRAPHIC MAPS

FILE No \_\_\_\_\_  
DRAWING No. \_\_\_\_\_  
SCALE 1" = 1000'  
MINIMUM DEGREE OF ACCURACY 1 : 10,000  
PROVEN SOURCE OF ELEVATION GPS SURVEY

I THE UNDERSIGNED, HEREBY CERTIFY THAT THIS PLAT IS CORRECT TO THE BEST OF MY KNOWLEDGE AND BELIEF AND SHOWS ALL THE INFORMATION REQUIRED BY LAW AND THE REGULATIONS ISSUED AND PRESCRIBED BY THE DEPARTMENT OF MINES

(SIGNED) *Albert J. Miller*  
R.P.E. \_\_\_\_\_ R.P.S. 513

PLACE SEAL HERE

ALBERT J. MILLER  
LICENSED  
No. 513  
STATE OF  
WEST VIRGINIA  
LAND SURVEYOR

STATE OF WEST VIRGINIA  
DIVISION OF ENVIRONMENTAL PROTECTION  
OFFICE OF OIL AND GAS  
NITRO, WV

DATE FEBRUARY 18 19 98  
OPERATOR'S WELL No. AL-83  
API WELL No. 47 039-05206

WELL TYPE: OIL \_\_\_ GAS  LIQUID INJECTION \_\_\_ WASTE DISPOSAL \_\_\_ STATE COUNTY PERMIT  
(IF "GAS") PRODUCTION  STORAGE \_\_\_ DEEP \_\_\_ SHALLOW

LOCATION: ELEVATION 1109.06 WATER SHED OIL WELL BR. TO MORRIS FK. TO BLUE CK. TO ELK RIVER  
DISTRICT ELK COUNTY KANAWHA  
QUADRANGLE MAMMOTH

SURFACE OWNER APPALACHIAN LAND COMPANY ACREAGE 18,977.62  
OIL & GAS ROYALTY OWNER PINE MOUNTAIN LEASE ACREAGE 18,977.62  
LEASE No. \_\_\_\_\_

PROPOSED WORK: DRILL  CONVERT \_\_\_ DRILL DEEPER \_\_\_ REDRILL \_\_\_ FRACTURE OR  
STIMULATE  PLUG OFF OLD FORMATION \_\_\_ PERFORATE NEW  
FORMATION \_\_\_ OTHER PHYSICAL CHANGE IN WELL (SPECIFY) G-C 216

PLUG AND ABANDON \_\_\_ CLEAN OUT AND REPLUG \_\_\_  
TARGET FORMATION INJUN WEIR ESTIMATED DEPTH 2500'

WELL OPERATOR REED BROTHERS LTD. PARTNERSHIP DESIGNATED AGENT JAMES W. REED, JR.  
ADDRESS 1206 KANAWHA BLVD. EAST ADDRESS 1206 KANAWHA BLVD. EAST  
SUITE 201 CHARLESTON, WV 25301 SUITE 201 CHARLESTON, WV 25301

MAR 13 1998

FORM IV-6 (8-78)

KAN 5206

WA-55

State of West Virginia  
Division of Environmental Protection  
Section of Oil and Gas

10-Mar-98  
API # 47- 39-05206  
Reviewed RS

Well Operator's Report of Well Work

Farm name: Appalachian Land Co. Operator Well No.: AL-83

LOCATION: Elevation: 1,109.06 Quadrangle: MAMMOTH

District: ELK County: KANAWHA  
Latitude: 15050 Feet South of 38 Deg. 22Min. 30 Sec.  
Longitude: 1475 Feet West of 81 Deg. 20 Min. 0 Sec.

Company: REED GAS, INC.  
1206 KANAWHA BLVD. E., STE.301  
CHARLESTON, WV 25301-0000

Agent: JAMES W REED, JR.

Inspector: CARLOS HIVELEY  
Permit Issued: 03/09/98  
Well work Commenced: 4/21/98  
Well work Completed: 4/27/98  
Verbal Plugging  
Permission granted on:  
Rotary XX Cable Rig  
Total Depth (feet) 2301  
Fresh water depths (ft) 45' 173'  
Salt water depths (ft) 1075'

Casing & Tubing Size	Used in Drilling	Left in Well	Cement Fill Up Cu. Ft.
11 3/4	20	-0-	
8 5/8		341	114 CU FT
5 1/2		2236	326 CU FT
1 1/2		2053	

Is coal being mined in area (Y/N)?  
Coal Depths (ft): NONE REPORTED

OPEN FLOW DATA

Producing formation WEIR, KEENER, LIME Pay zone depth (ft) ON BACK  
Gas: Initial open flow \_\_\_\_\_ MCF/d Oil: Initial open flow \_\_\_\_\_ Bbl/d  
Final open flow 474 MCF/d Final open flow \_\_\_\_\_ Bbl/d  
Time of open flow between initial and final tests \_\_\_\_\_ Hours  
Static rock Pressure 650 psig (surface pressure) after \_\_\_\_\_ Hours

Second producing formation \_\_\_\_\_ Pay zone depth (ft) \_\_\_\_\_  
Gas: Initial open flow \_\_\_\_\_ MCF/d Oil: Initial open flow \_\_\_\_\_ Bbl/d  
Final open flow \_\_\_\_\_ MCF/d Final open flow \_\_\_\_\_ Bbl/d  
Time of open flow between initial and final tests \_\_\_\_\_ Hours  
Static rock Pressure \_\_\_\_\_ psig (surface pressure) after \_\_\_\_\_ Hours

NOTE: ON BACK OF THIS FORM PUT THE FOLLOWING: 1). DETAILS OF PERFORATED INTERVALS, FRACTURING OR STIMULATING, PHYSICAL CHANGE, ETC. 2). THE WELL LOG WHICH IS A SYSTEMATIC DETAILED GEOLOGICAL RECORD OF ALL FORMATIONS, INCLUDING COAL ENCOUNTERED BY THE WELLBORE.

JAMES W REED, JR  
For: REED GAS, INC.  
By: James W. Reed, Jr.  
Date: 3/18/99

MAR 29 1999

KAN 5206

**WR-35 Completion Report**  
**AL-83 API# 47-039-05206**  
**Kanawha County**

---

**FIRST STAGE PERFORATIONS: LOWER WEIR**

2118' - 2126', 17 holes

**SECOND STAGE PERFORATIONS: KEENER**

1940' to 1944', 14 holes

**THIRD STAGE PERFORATIONS: LIME**

1848' to 1852', 8 holes

1892' to 1896', 8 holes

**STIMULATION**

Broke down first stage (Lower Weir) with 500 gallon of 18% HCl at a pressure of 2400 PSI with casing full of water. Pumped a 40 bbl pad of 75 quality foam followed by 300 sks of 20/40 sand in 75 quality foam at an average foam rate of 24 bbl/min. ISIP of 1670 PSI and an average treating pressure of 2630 PSI. Used 418,000 scf of N<sub>2</sub> and a total of 280 bbls of fluid. Maximum sand conc. of 3#/gal down hole.

Broke down Keener at 1925 PSI with 500 gallon of 15% HCl and casing full of water. Pumped a 35 bbl pad of 75 quality foam followed by 105 sks of 20/40 sand in 75 quality foam at an average foam rate of 26 bbls/min. ISIP of 1800 PSI and an average treating pressure of 2670 PSI. Used a total 114 bbls of fluid and 245,000 scf of N<sub>2</sub>. Maximum sand conc. of 2#/gal. down hole

**GEOLOGICAL RECORD**

Surface	0 - 20 ft
Sand and Shale	20 - 800
Upper Rosedale	800 - 850
Shale	850 - 940
Lower Rosedale	940 - 990
Salt Sand	990 - 1550
Shale	1550 - 1620
Maxon	1620 - 1660
Red rock & Shale	1660 - 1710
Little Lime	1710 - 1750
Big Lime	1750 - 1950
Shale	1950 - 2000
Upper Weir	2000 - 2020
Sand & Shale	2020 - 2080
Lower Weir	2080 - 2130
Shale	2130 - TD