

39 05547 A

WW-7
8-30-06



West Virginia Department of Environmental Protection
Office of Oil and Gas
WELL LOCATION FORM: GPS

API: 47-039-05547 WELL NO.: 147
FARM NAME: Shonk Land Company
RESPONSIBLE PARTY NAME: Gary E. Acord
COUNTY: Kanawha DISTRICT: Cabin Creek
QUADRANGLE: Sylvester
SURFACE OWNER: Shonk Land Company
ROYALTY OWNER: Shonk Land Company
UTM GPS NORTHING: 4217902.834
UTM GPS EASTING: 455789.209 GPS ELEVATION: 1472.03 feet

The Responsible Party named above has chosen to submit GPS coordinates in lieu of preparing a new well location plat for a plugging permit or assigned API number on the above well. The Office of Oil and Gas will not accept GPS coordinates that do not meet the following requirements:

1. Datum: NAD 1983, Zone: 17 North, Coordinate Units: meters, Altitude: height above mean sea level (MSL) – meters.
2. Accuracy to Datum – 3.05 meters
3. Data Collection Method:
Survey grade GPS X: Post Processed Differential _____
Real-Time Differential _____
Mapping Grade GPS _____: Post Processed Differential _____
Real-Time Differential _____

Received
MAY 17 2013
Office of Oil and Gas
Department of Environmental Protection

4. Letter size copy of the topography map showing the well location.

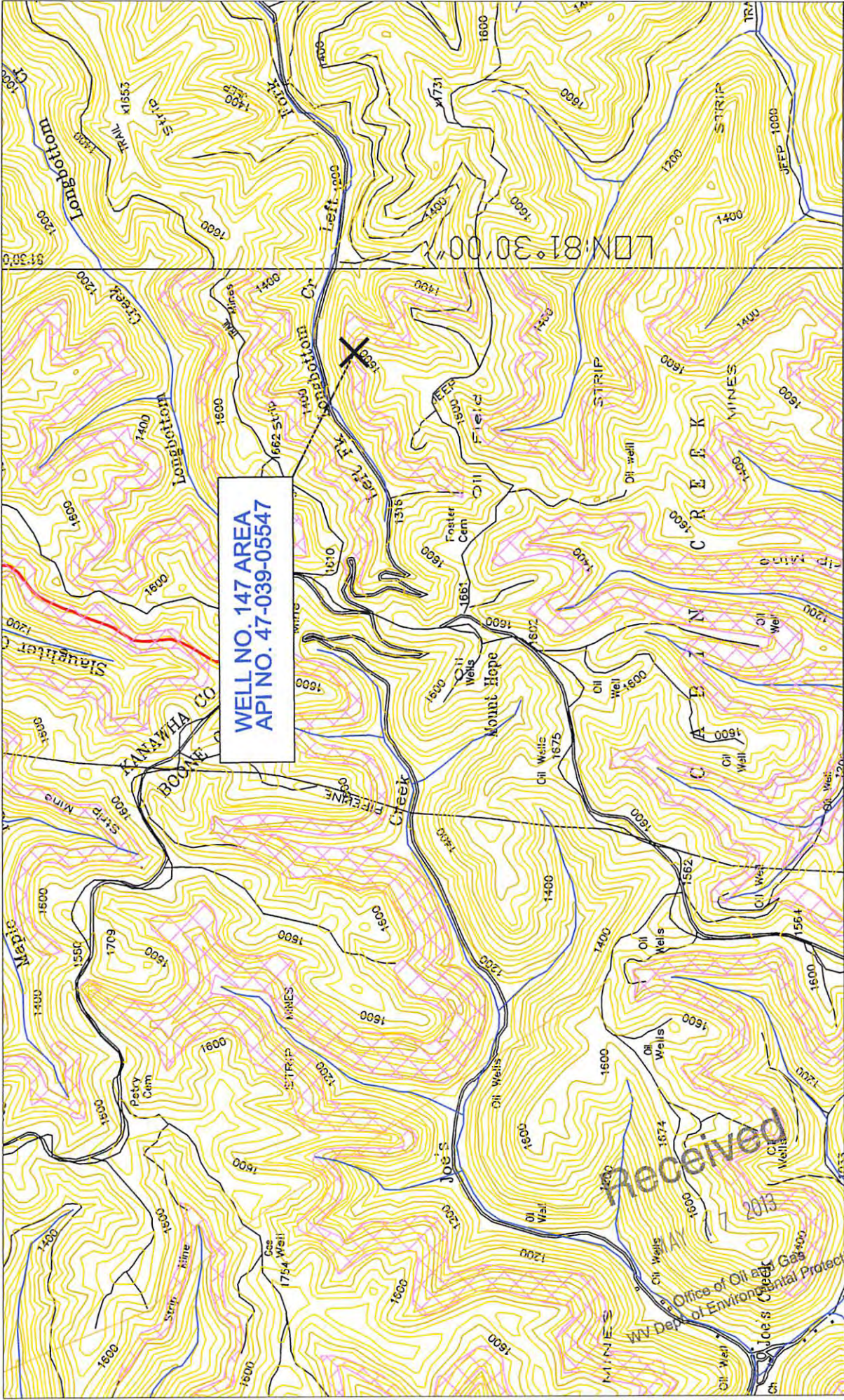
I the undersigned, hereby certify this data is correct to the best of my knowledge and belief and shows all the information required by law and the regulations issued and prescribed by the Office of Oil and Gas.

Gary E. Acord
Signature

Supervising Engineer
Title

5-16-13
Date

3905547 P



WELL NO. 147 AREA
 API NO. 47-039-05547

SLYVESTER QUADRANGLE
 WEST VIRGINIA - KANAWHA CO.
 7.5 MINUTE SERIES (TOPOGRAPHIC)
 NE/4 PEYTONA 15 MINUTE QUADRANGLE

PANTHER, LLC.
 AMERICAN EAGLE MINE
 Well No. 147
 Scale: 1" = 2000'

Received
 APR 17 2013

U.S. Office of Oil and Gas
 WV Dept. of Environmental Protection
 Joe's Creek