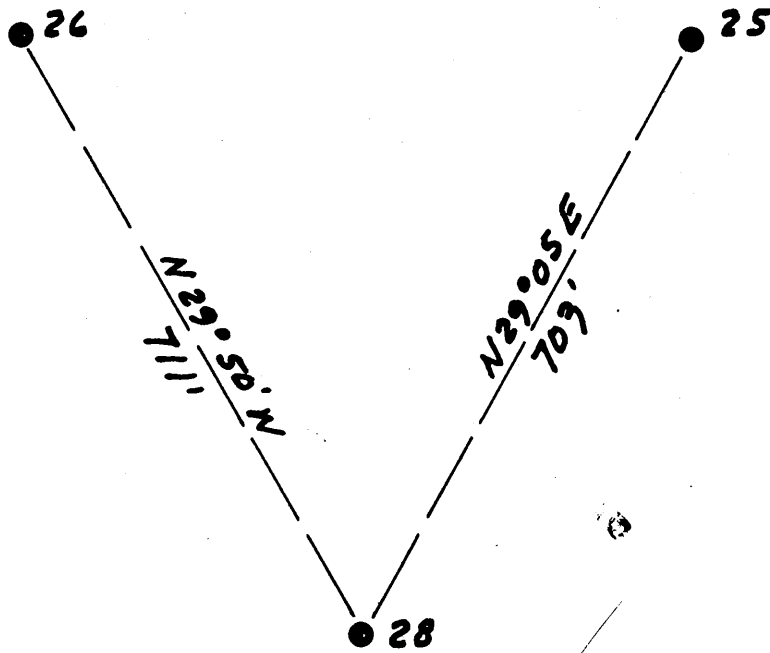


Latitude 38° 10'

Reassigned to: 47-039-06316

Longitude 81° 25'

Williams Coal Co.
12000[±]



New Location...
 Drill Deeper...
 Abandonment...

4.2 W
3.43 Q

Company The Pure Oil Co.
 Address Newark, Ohio Box 551
 Farm Williams Coal Co.
 Tract _____ Acres 12000 Lease No. 5012
 Well (Farm) No. 28 Serial No. 345
 Elevation (Spirit Level) 1440
 Quadrangle Montgomery
 County Kanawha District Cabin Creek
 Engineer J. B. Hunter
 Engineer's Registration No. Ohio-2912
 File No. _____ Drawing No. _____
 Date 5-1-51 Scale 1" = 200'

STATE OF WEST VIRGINIA
 DEPARTMENT OF MINES
 OIL AND GAS DIVISION
 CHARLESTON

WELL LOCATION MAP
 FILE NO. KAN-844-A

+ Denotes location of well on United States Topographic Maps, scale 1 to 62,500, latitude and longitude lines being represented by border lines as shown.

- Denotes one inch spaces on border line of original tracing.

6-6-240

"IMPERIAL" TRACING CLOTH
 K & F CO., N. Y.

WILLIAMS COAL CO. NO. 28 - THE PURE OIL CO. - KAN-844-A



1633

Reassigned to: 47-039-06316

STATE OF WEST VIRGINIA DEPARTMENT OF MINES OIL AND GAS DIVISION

WELL RECORD

Permit No. KAW-844-A

Oil or Gas Well OIL

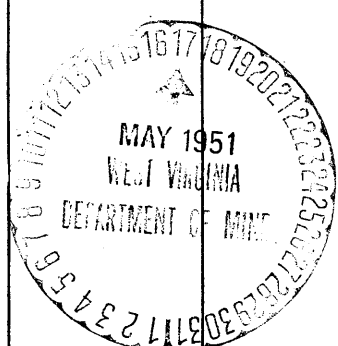
Company The Pure Oil Company
Address P. O. Box 551, Newark, Ohio
Farm Williams Coal Company Acres 12,000
Location (waters)
Well No. 28 Elev. 1440'
District Cabin Creek County Kanawha
The surface of tract is owned in fee by Shepley Land Company
802 Kanawha Banking & Trust Bldg.
Address Charleston, W. Va.
Mineral rights are owned by Same as above
Address
Drilling commenced November 5, 1916
Drilling completed February 13, 1917
Date Shot 2/15/17 From 3101 To 3120
With 60 Qts. Glycerine

Table with columns: Casing and Tubing, Used in Drilling, Left in Well, Packers. Includes rows for Size (16, 13, 10 -3/4", 8 1/4", 6 5/8", 5 3/16, 3, 2) and Liners Used.

Open Flow /10ths Water in Inch
/10ths Merc. in Inch
Volume Cu. Ft.
Rock Pressure lbs. hrs.
Oil 82 bbls., 1st 24 hrs.
Fresh water 290 feet 765 feet
Salt water 1630 feet

Table with columns: CASING CEMENTED, SIZE, No. Ft., Date. Includes rows for COAL WAS ENCOUNTERED AT 150 FEET 36 INCHES, 470 FEET 60 INCHES 880 FEET 36 INCHES, 930 FEET 60 INCHES FEET INCHES.

Main well log table with columns: Formation, Color, Hard or Soft, Top, Bottom, Oil, Gas or Water, Depth Found, Remarks. Includes entries for Conductor, Sand, Slate, Coal #5, etc., with depths and remarks like '1 bailer per hr.' and 'filled up 1000'.



JAN 16 1952

Formation	Color	Hard or Soft	Top	Bottom	Oil, Gas or Water	Depth Found	Remarks
BIG LIME	white		2640	2675	Gas	2520	
BIG INJUN	red		2675	2720			
Slate	black		2720	3040			
Lime	gray		3040	3075			
Shale	brown		3075	3089			
BEREA SAND	white		3089	3121	oil gas	3101 3112	
TOTAL DEPTH				3124			

Reassigned to: 47-039-06316

Date May 10, 19 51

APPROVED THE PURE OIL COMPANY, Owner

By *Ray Anderson*
Division Superintendent (Title)