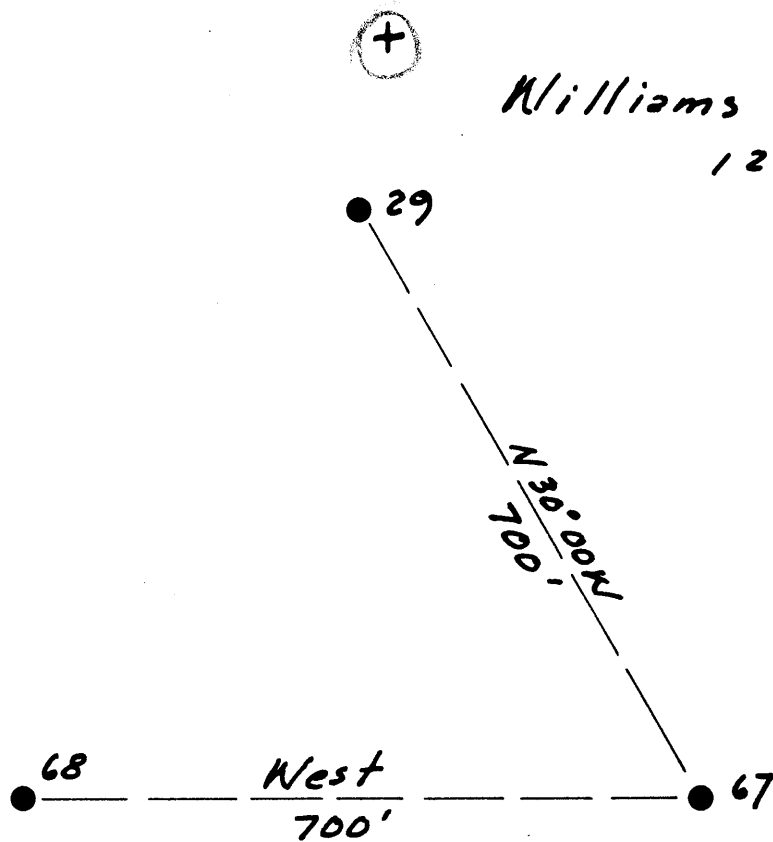


Latitude $38^{\circ} 10'$

Reassigned to: 47-039-06317

Longitude $81^{\circ} 25'$



4.31 W
3.6 Q

New Location
 Drill Deeper
 Abandonment

Company The Pure Oil Co.
 Address Newark, Ohio
 Farm Williams Coal Co.
 Tract _____ Acres 12000 Lease No. 5012
 Well (Farm) No. 67 Serial No. 351
 Elevation (Spirit Level) 1478
 Quadrangle Montgomery
 County Kanawha District Cabin Creek
 Engineer J. B. Hunter
 Engineer's Registration No. Ohio - 2912
 File No. _____ Drawing No. _____
 Date 5-1-51 Scale 1" = 200'

STATE OF WEST VIRGINIA
 DEPARTMENT OF MINES
 OIL AND GAS DIVISION
 CHARLESTON

WELL LOCATION MAP
 FILE NO. KAN-850-A

+ Denotes location of well on United States Topographic Maps, scale 1 to 62,500, latitude and longitude lines being represented by border lines as shown.

- Denotes one inch spaces on border line of original tracing.

WILLIAMS COAL CO., 67 - THE PURE OIL CO. - KAN-850-A



Reassigned to: 47-039-06317

STATE OF WEST VIRGINIA DEPARTMENT OF MINES OIL AND GAS DIVISION

1651

WELL RECORD

Permit No. KAN 850 A

Oil or Gas Well Water Injection (KIND)

Company The Pure Oil Company
Address P. O. Box 551, Newark, Ohio
Farm Williams Coal Company Acres 12,000
Location (waters)
Well No. 67 Elev. 1478'
District Cabin Creek County Kanawha
The surface of tract is owned in fee by Sheple Land Company
802 Kanawha Banking & Trust Bldg.
Address Charleston, W. Va.
Mineral rights are owned by Same as above
Address
Drilling commenced November 15, 1916
Drilling completed March 22, 1917
Date Shot 3/24/17 From 3145 To 3156
With 50 Qts. Glycerine

Table with columns: Casing and Tubing, Used in Drilling, Left in Well, Packers. Includes rows for sizes 16, 13, 10-3/4", 8 1/4", 6 5/8", 5 3/16", 3", and 1".

Open Flow /10ths Water in Inch
/10ths Merc. in Inch
Volume Cu. Ft.
Rock Pressure lbs. hrs.
Oil 40 bbls., 1st 24 hrs.
Fresh water feet feet
Salt water 1570 feet 2255 feet

CASING CEMENTED SIZE No. Ft. Date

COAL WAS ENCOUNTERED AT 130 FEET 60 INCHES
295 FEET 96 INCHES 430 FEET 24 INCHES
555 FEET 60 INCHES 770 FEET 60 INCHES
924 60 955 34

Main stratigraphic log table with columns: Formation, Color, Hard or Soft, Top, Bottom, Oil, Gas or Water, Depth Found, Remarks. Includes a note about casinghead lowering in 1948.



(Over)

552 21 1952

Formation	Color	Hard or Soft	Top	Bottom	Oil, Gas or Water	Depth Found	Remarks
SALT SAND	white		1545	1815	Water	1570	3 bailers per hr Hole filled 800'
					Water	1700'	
Slate & shells	black		1815	1855			
Red Rock			1855	1862			
Lime	gray		1862	1970			
Red Rock			1970	2026			
Sand	white		2026	2104			
Red Rock			2104	2125			
Lime	gray		2125	2188			
MAXON SAND	white		2188	2260	Water	2255'	Filled up 1050'
Slate & lime shells			2260	2435			
Little Lime	gray		2435	2480			
Pencil Cave	black		2480	2484			
BIG LIME	gray		2484	2660	Gas	2625'	
KEMMER SAND	white		2660	2690			
BIG INJUN	red		2690	2730			
Lime & shells			2730	3104			
Shale	brown		3104	3128			
BERRA SAND			3128	3156	Oil	3145'	
TOTAL DEPTH				3150			

Reassigned to: 47-039-06317

Date May 11, 1951

APPROVED THE PURE OIL COMPANY, Owner

By [Signature]
(Title)
Division Superintendent