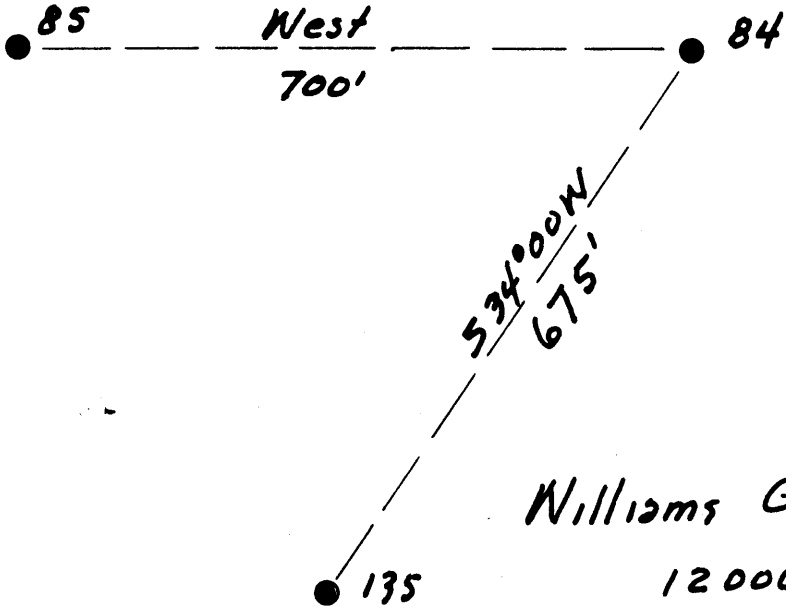


Latitude 38° 10'

Reassigned to: 47-039-06318

Longitude 81° 25'



Williams Coal Co.
12000 ac

4.4 W
3.7 W

New Location
 Drill Deeper
 Abandonment

Company The Pure Oil Co.
 Address Newark, Ohio
 Farm Williams Coal Co.
 Tract _____ Acres 12000 Lease No. 5012
 Well (Farm) No. 84 Serial No. 355
 Elevation (Spirit Level) 1473
 Quadrangle Montgomery
 County Kenosha District Cabin Creek
 Engineer J. B. Hunter
 Engineer's Registration No. Ohio-2912
 File No. _____ Drawing No. _____
 Date 5-1-51 Scale 1" = 200'

STATE OF WEST VIRGINIA
 DEPARTMENT OF MINES
 OIL AND GAS DIVISION
 CHARLESTON

WELL LOCATION MAP
 FILE NO. KAN-854-A

+ Denotes location of well on United States Topographic Maps, scale 1 to 62,500, latitude and longitude lines being represented by border lines as shown.

- Denotes one inch spaces on border line of original tracing.

8-0240



Reassigned to: 47-039-06318

STATE OF WEST VIRGINIA DEPARTMENT OF MINES OIL AND GAS DIVISION

1674

WELL RECORD

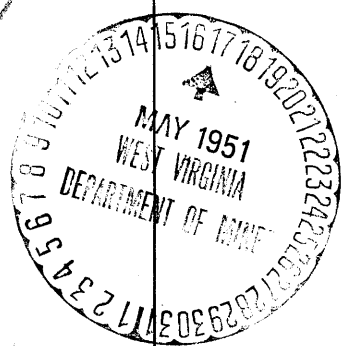
Oil or Gas Well Water Injection (KIND)

Permit No. KAN 854-A
Company The Pure Oil Company
Address P. O. Box 551, Newark, Ohio
Farm Williams Coal Company Acres 12,000
Location (waters)
Well No. 84 Elev. 1473'
District Cabin Creek County Kanawha
The surface of tract is owned in fee by Shank Land Company
802 Kanawha Banking & Trust Bldg.
Address Charleston, W. Va.
Mineral rights are owned by Same as above
Address
Drilling commenced March 12, 1917
Drilling completed June 23, 1917
Date Shot 6/26/17 From 3197' To 3161'
With 20 Qts. Glycerine
Open Flow /10ths Water in Inch
/10ths Merc. in Inch
Volume Cu. Ft.
Rock Pressure lbs. hrs.
Oil 25 bbls., 1st 24 hrs.
Fresh water 800 feet
Salt water 1670 2240 feet

Table with columns: Casing and Tubing, Used in Drilling, Left in Well, Packers. Includes data for sizes 16, 13, 10-3/4, 8 1/4, 6 3/8, 5 3/16, 3, 2 and packer details like 'Packer loaded with 2 sacks of clay & 32 sacks of cement.'

Table with columns: CASING CEMENTED, SIZE, No. Ft., Date. Includes text: COAL WAS ENCOUNTERED AT 707 FEET 36 INCHES, 745 FEET 60 INCHES 915 FEET 60 INCHES, 942 FEET 36 INCHES FEET INCHES

Main well log table with columns: Formation, Color, Hard or Soft, Top, Bottom, Oil, Gas or Water, Depth Found, Remarks. Lists geological layers from Conductor to Heavy Sand with depths and remarks like 'filled 1000'' and 'filled 400''.



JUL 9 1952

Formation	Color	Hard or Soft	Top	Bottom	Oil, Gas or Water	Depth Found	Remarks
Slate	black		2270	2290			
Slate & Lime	black		2290	2450			
Pencil cove	black		2450	2482			
BIG LIME	white		2482	2692			
BIG INJUN	red		2692	2735			
Slate & shells	black		2735	3110			
Shale	brown		3110	3133			
BEREA SAND	white		3133	3163	oil	3153'	
TOTAL DEPTH				3167			

Reassigned to: 47-039-06318

Date May 12, 1951

APPROVED THE PURE OIL COMPANY, Owner

By [Signature]
Division Superintendent