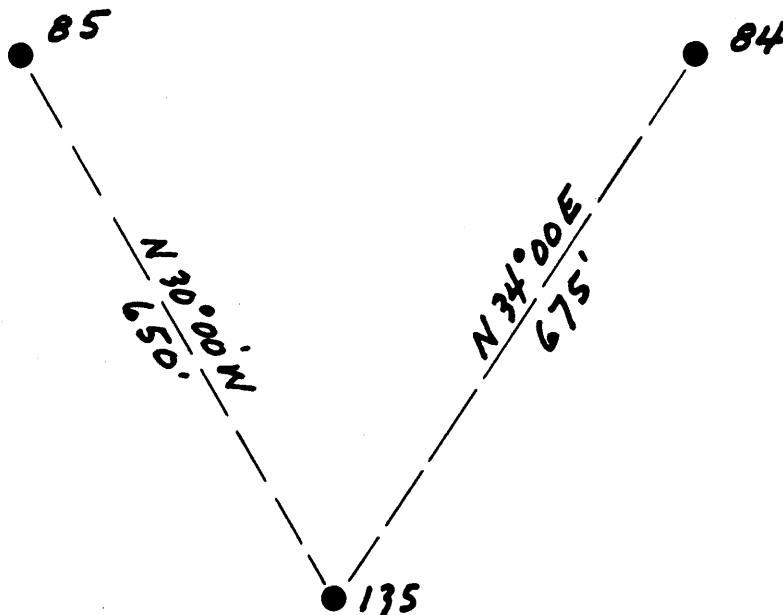


Latitude 10° 10'

Reassigned to: 47-039-06320

Longitude 81° 25'

Williams Coal Co.  
12000 ac



Handwritten notes: 4.47 and 3.16 with arrows pointing to the diagram lines.

New Location   
Drill Deeper   
Abandonment

Company The Pure Oil Co.  
 Address Newark, Ohio Box 551  
 Farm Williams Coal Co.  
 Tract \_\_\_\_\_ Acres 12000 Lease No. 5012  
 Well (Farm) No. 135 Serial No. 360  
 Elevation (Spirit Level) 1386  
 Quadrangle Montgomery  
 County Kenowa District Cabin Creek  
 Engineer J. B. Hunter  
 Engineer's Registration No. Ohio-2912  
 File No. \_\_\_\_\_ Drawing No. \_\_\_\_\_  
 Date 5-1-51 Scale 1" = 200'

STATE OF WEST VIRGINIA  
DEPARTMENT OF MINES  
OIL AND GAS DIVISION  
CHARLESTON

WELL LOCATION MAP  
FILE NO. KAN-859-A

+ Denotes location of well on United States Topographic Maps, scale 1 to 62,500, latitude and longitude lines being represented by border lines as shown.

- Denotes one inch spaces on border line of original tracing.

Handwritten: 6-6 240



Reassigned to: 47-039-06320

1675

STATE OF WEST VIRGINIA  
DEPARTMENT OF MINES  
OIL AND GAS DIVISION

Permit No. KAN-859-A

WELL RECORD

Oil or Gas Well Oil  
(KIND)

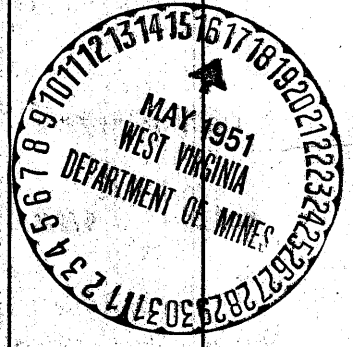
Company The Pure Oil Company  
 Address P. O. Box 221, Newark, Ohio  
 Farm William Coal Company Acres 12.000  
 Location (waters) \_\_\_\_\_  
 Well No. 135 Elev. 2364  
 District Galax Creek County Kanawha  
 The surface of tract is owned in \_\_\_\_\_  
 Address \_\_\_\_\_  
 Mineral rights are owned by Same as above  
 Address \_\_\_\_\_  
 Drilling commenced June 24, 1938  
 Drilling completed September 20, 1938  
 Date Shot 10-1-38 From 2070 To 2070  
 With 70 lbs. Dynamite

Casing and Tubing	Used in Drilling	Left in Well	Packers
Size			Kind of Packer
13			
10			Size of
8			Depth set
6 3/16			Perf. top
3			Perf. bottom
2			Perf. top
Liners Used			Perf. bottom

Open Flow \_\_\_\_\_ /10ths Water in \_\_\_\_\_ Inch  
 \_\_\_\_\_ /10ths Merc. in \_\_\_\_\_ Inch  
 Volume \_\_\_\_\_ Cu. Ft.  
 Rock Pressure \_\_\_\_\_ lbs \_\_\_\_\_ hrs.  
 Oil \_\_\_\_\_ bbls., let 24 hrs.  
 Fresh water \_\_\_\_\_ feet \_\_\_\_\_ feet  
 Salt water 1400 feet \_\_\_\_\_ feet

CASING CEMENTED	SIZE	No. Ft.	Date
COAL WAS ENCOUNTERED AT _____ FEET _____ INCHES			
_____ FEET	_____ INCHES	_____ FEET	_____ INCHES
_____ FEET	_____ INCHES	_____ FEET	_____ INCHES

Formation	Color	Hard or Soft	Top	Bottom	Oil, Gas or Water	Depth Found	Remarks



(Over)

JUL 9 1951



Formation	Color	Hard or Soft	Top	Bottom	Oil, Gas or Water	Depth Found	Remarks
Black & blue shale	Black						
Black shale	Black						
Black & blue shale	Black						
Black shale	Black						
Black & blue shale	Black						
Black shale	Black						
Black shale	Black						
Black shale	Black						
Black & blue shale	Black						
Black shale	Black				gas	2075	low
Black shale	Black				oil & gas	2066 and 2070	
Black shale	Black						
Black shale	Black						

Note: Coring was done in 1942. All measurements should be made from a point 1' above casinghead.

Reassigned to: 47-039-06320

Date: May 14, 1942

APPROVED: THE TEXAS OIL COMPANY, Owner

By: *[Signature]* (Title)