

Longitude - 81° 24' 51.8"

11,280'

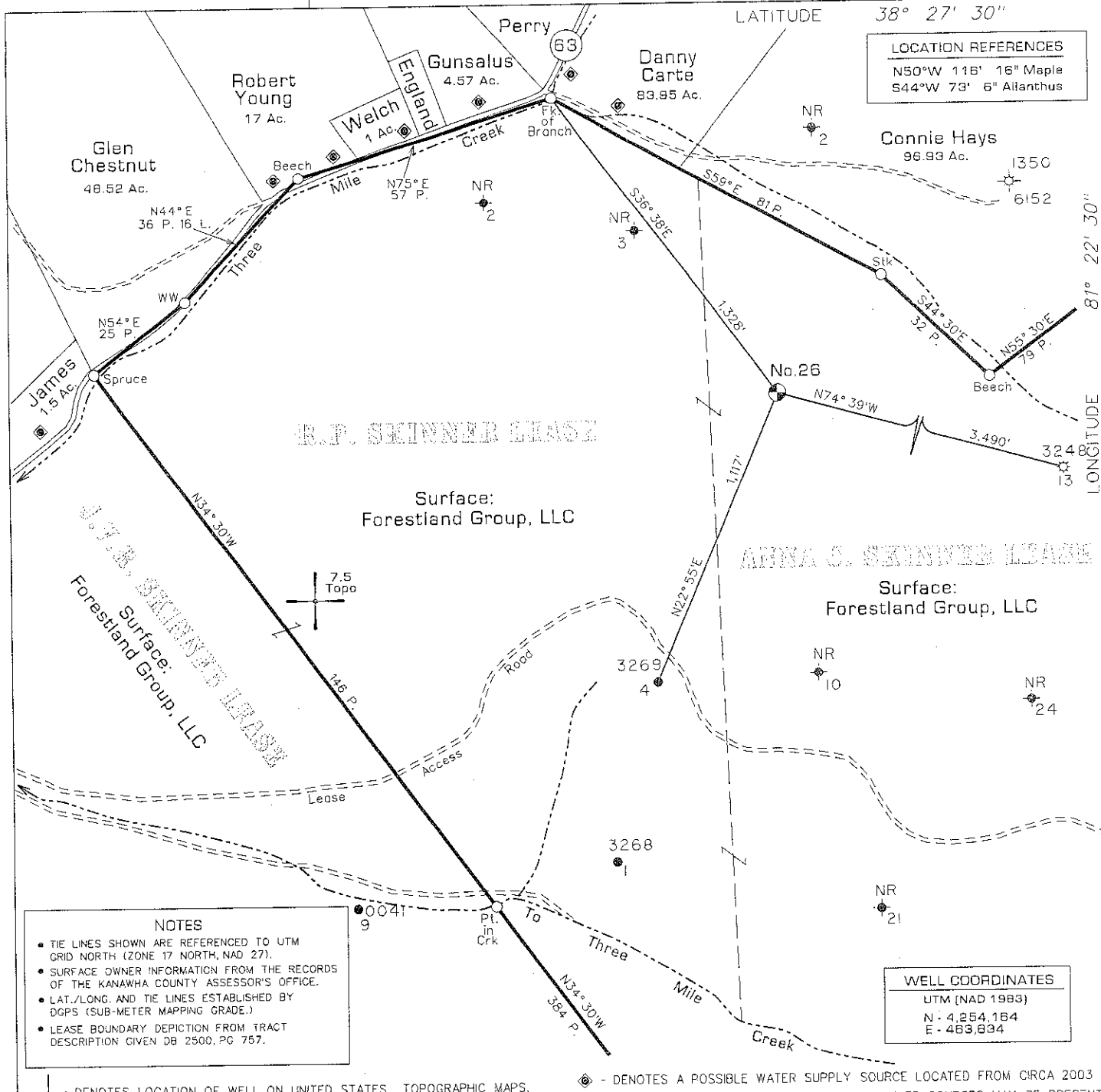
34-06341

LATITUDE

38° 27' 30"

LOCATION REFERENCES

N50°W 116' 16" Maple  
S44°W 73' 6" Ailanthus



R.P. SKINNER LEASE

Surface:  
Forestland Group, LLC

ANNA C. SKINNER LEASE

Surface:  
Forestland Group, LLC

NOTES

- TIE LINES SHOWN ARE REFERENCED TO UTM GRID NORTH (ZONE 17 NORTH, NAD 27).
- SURFACE OWNER INFORMATION FROM THE RECORDS OF THE KANAWHA COUNTY ASSESSOR'S OFFICE.
- LAT./LONG. AND TIE LINES ESTABLISHED BY DGPS (SUB-METER MAPPING GRADE.)
- LEASE BOUNDARY DEPICTION FROM TRACT DESCRIPTION GIVEN DB 2500, PG 757.

WELL COORDINATES

UTM (NAD 1983)  
N - 4,254,164  
E - 463,884

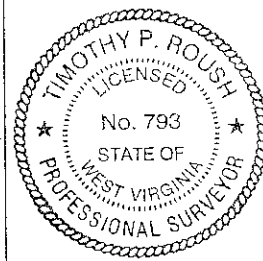
— DENOTES LOCATION OF WELL ON UNITED STATES TOPOGRAPHIC MAPS.

⊙ - DENOTES A POSSIBLE WATER SUPPLY SOURCE LOCATED FROM CIRCA 2003 AERIAL PHOTOGRAPHY - NOT BY SURVEY. OTHER SOURCES MAY BE PRESENT.

FILE NO. 115-75  
 DRAWING NO. 26  
 SCALE 1" = 500'  
 MINIMUM DEGREE OF ACCURACY Sub-Meter  
 PROVEN SOURCE OF ELEVATION DGPS Survey

I THE UNDERSIGNED, HEREBY CERTIFY THAT THIS PLAT IS CORRECT TO THE BEST OF MY KNOWLEDGE AND BELIEF AND SHOWS ALL THE INFORMATION REQUIRED BY LAW AND THE REGULATIONS ISSUED AND PRESCRIBED BY THE DEPARTMENT OF MINES

(SIGNED) *Timothy P. Roush*  
 TIMOTHY P. ROUSH PS 793



WEST VIRGINIA  
 Division of Environmental Protection  
 Office of Oil and Gas  
 601 57th Street  
 Charleston, West Virginia 25304



DATE May 28, 2012  
 FARM Anna C. Skinner No.26  
 API WELL NO. 47-039-06341

WELL TYPE: OIL  GAS  LIQUID INJECTION  WASTE DISPOSAL   
 (IF "GAS") PRODUCTION  STORAGE  DEEP  SHALLOW  HORIZONTAL   
 LOCATION: ELEVATION 1,029' WATERSHED Three Mile Creek  
 DISTRICT Elk COUNTY Kanawha  
 QUADRANGLE Blue Creek 7.5'

SURFACE OWNER Forestland Group, LLC ACREAGE 685.75 Ac.  
 OIL & GAS ROYALTY OWNER Charles W. Skinner Jr. LEASE ACREAGE 625 Ac.

PROPOSED WORK: DRILL  CONVERT  DRILL DEEPER  REDRILL  FRACTURE OR STIMULATE  PLUG OFF OLD FORMATION  PERFORATE NEW FORMATION  OTHER PHYSICAL CHANGE IN WELL (SPECIFY) \_\_\_\_\_

PLUG AND ABANDON  CLEAN OUT AND REPLUG

TARGET FORMATION Weir ESTIMATED DEPTH 2,200'

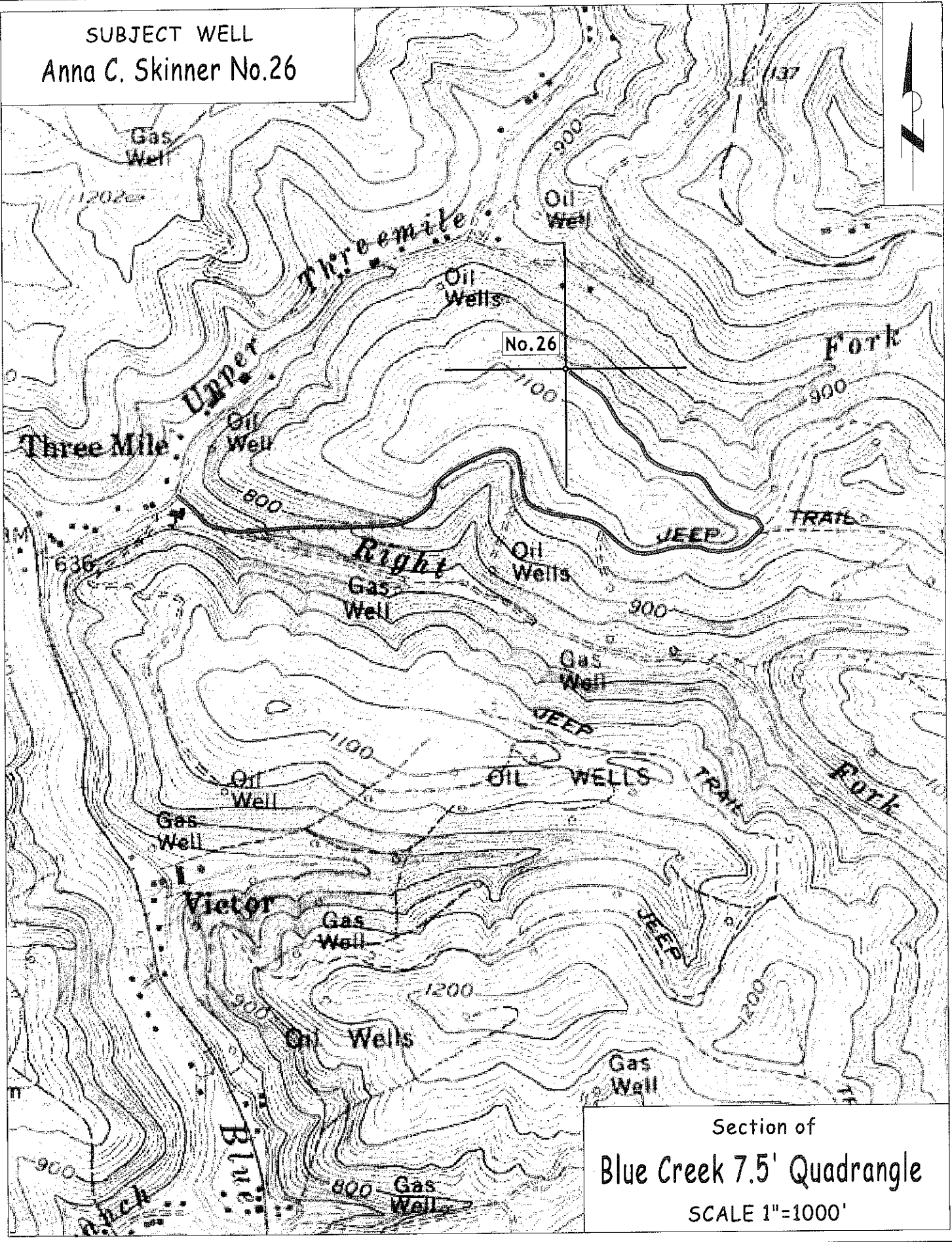
WELL OPERATOR C.I. McKown & Son, Inc. DESIGNATED AGENT C.I. McKown, II

ADDRESS P.O. Box 711 ADDRESS P.O. Box 711  
Newton, WV 25266 Newton, WV 25266

FORM IV-6

07/06/2012

SUBJECT WELL  
Anna C. Skinner No.26



Section of  
Blue Creek 7.5' Quadrangle  
SCALE 1"=1000'