



West Virginia Department of Environmental Protection
Office of Oil and Gas
WELL LOCATION FORM: GPS

39-06342P

API: Needs an API Number (Kan 1454) WELL NO.: 325
FARM NAME: Williams Coal Co.
RESPONSIBLE PARTY NAME: Gary E. Acord
COUNTY: Kanawha DISTRICT: Cabin Creek
QUADRANGLE: Eskdale
SURFACE OWNER: Shonk Land Company
ROYALTY OWNER: Shonk Land Company
UTM GPS NORTHING: 4217573.8
UTM GPS EASTING: 456283.1 GPS ELEVATION: 1274.6 feet

The Responsible Party named above has chosen to submit GPS coordinates in lieu of preparing a new well location plat for a plugging permit or assigned API number on the above well. The Office of Oil and Gas will not accept GPS coordinates that do not meet the following requirements:

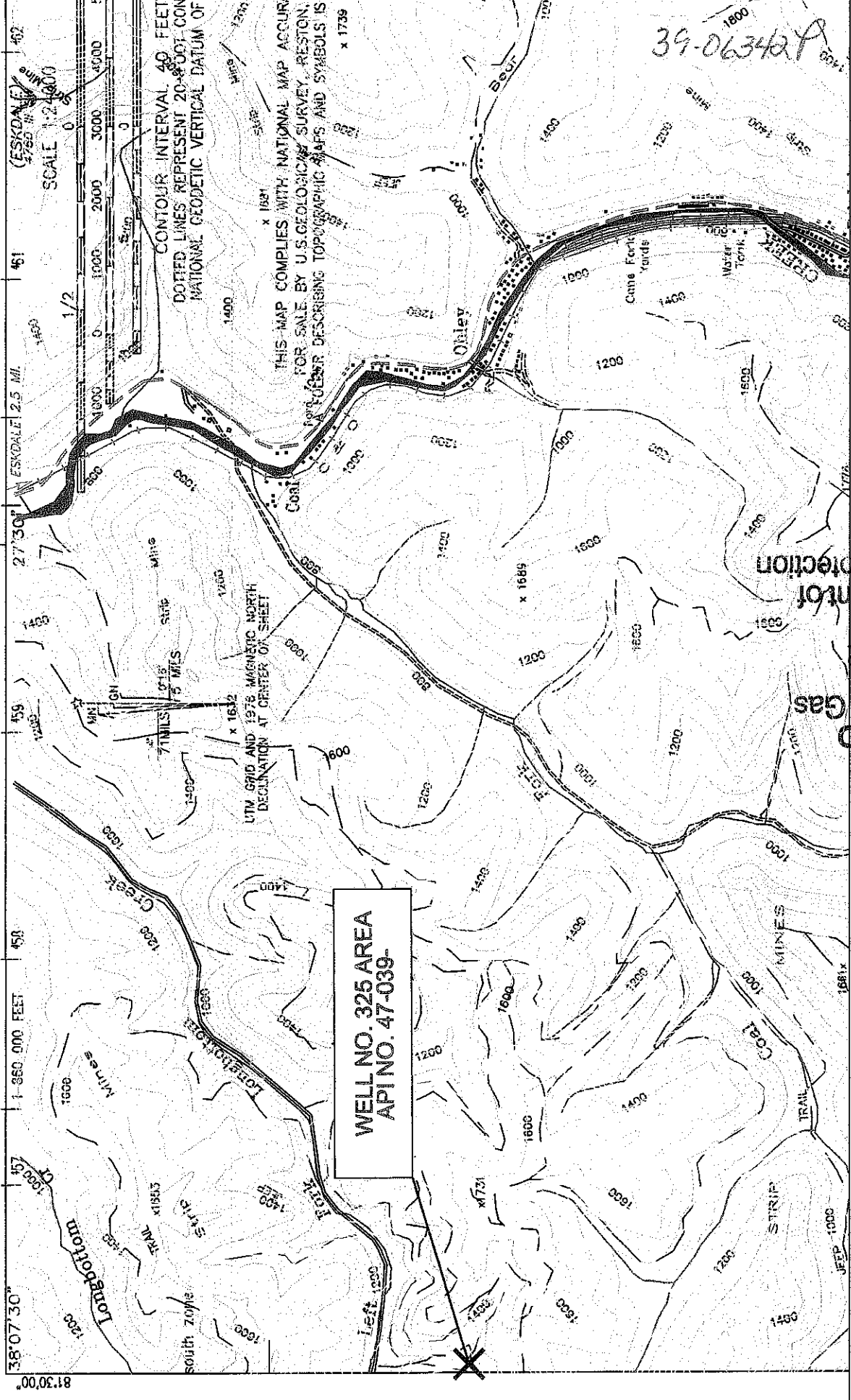
1. Datum: NAD 1983, Zone: 17 North, Coordinate Units: meters, Altitude: height above mean sea level (MSL) – meters.
2. Accuracy to Datum – 3.05 meters
3. Data Collection Method:
Survey grade GPS : Post Processed Differential _____
Real-Time Differential _____
Mapping Grade GPS _____ : Post Processed Differential _____
Real-Time Differential _____

4. Letter size copy of the topography map showing the well location.

I the undersigned, hereby certify this data is correct to the best of my knowledge and belief and shows all the information required by law and the regulations issued and prescribed by the Office of Oil and Gas.

Gary E. Acord, P.E. SUPERVISING ENGINEER 9-13-12
Signature Title Date

WELL NO. 325 AREA
APINO. 47-039-



CONTOUR INTERVAL 40 FEET
DOTTED LINES REPRESENT 20-FOOT CONTOUR
NATIONAL GEODETIC VERTICAL DATUM OF 1988

THIS MAP COMPLIES WITH NATIONAL MAP ACCURACY STANDARDS FOR SALE BY U.S. GEOLOGICAL SURVEY, RESTON, VIRGINIA. THIS MAP COMPLIES WITH NATIONAL MAP ACCURACY STANDARDS FOR SALE BY U.S. GEOLOGICAL SURVEY, RESTON, VIRGINIA. THIS MAP COMPLIES WITH NATIONAL MAP ACCURACY STANDARDS FOR SALE BY U.S. GEOLOGICAL SURVEY, RESTON, VIRGINIA.

39-06342

RECEIVED
Office of Oil & Gas
SEP 18 2012
U.S. Department of
Environmental Protection

SPEED MINING, LLC.
AMERICAN EAGLE MINE
Well No. 325
Scale: 1" = 2000'

ESKDALE QUADRANGLE
WEST VIRGINIA - KANAWHA CO.
7.5 MINUTE SERIES (TOPOGRAPHIC)
NW/4 MONTGOMERY 15 MINUTE QUADRANGLE