

SOUTH PIENN OIL COMPANY  
PROPOSED ABANDONMENT

H. E. BIRD WELL NO. 1 - BIG SANDY DISTRICT, KANAWHA COUNTY, W. VA.

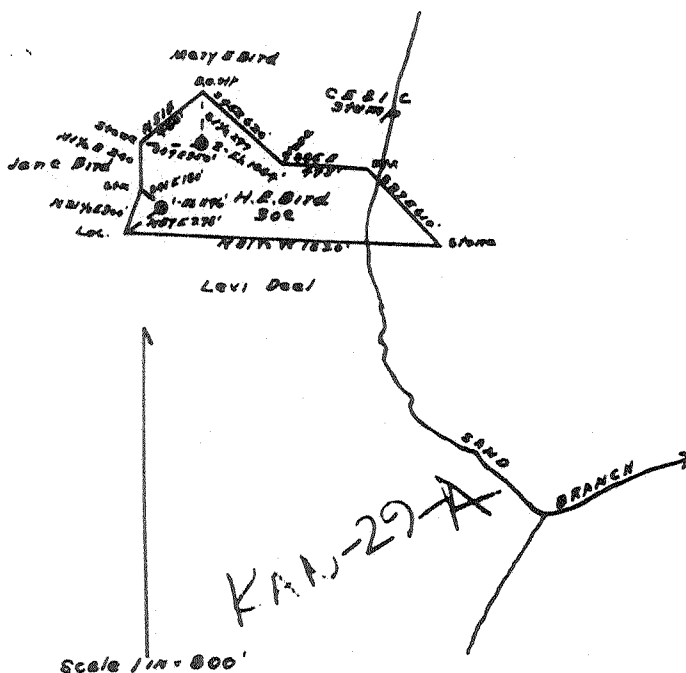
ENGINEER'S CERTIFICATE

I, the undersigned, hereby certify that this map is correct and shows all the information to the best of my knowledge and belief as required by the oil and gas section of the mining laws of West Virginia.

Frank Godwin  
Engineer

Acknowledged before me a Notary Public this 13th. day of February, 1931.  
My commission expires on the 30th. day of March, 1931.

John K. Higman  
Notary Public



KAN-29-A

Big Sandy District, Kanawha County, W. Va.  
 By South Penn Oil Co., P.O. Drawer, 1255, Pittsburgh, Pa.  
 On 30 acres, surface owned by A. M. Bird, Clendenin, W. Va.,  
 and mineral rights by Virginian Gasoline & Oil Co., Charleston, W. Va.  
 Elevation, 1196' L.  
 33' conductor; 10" casing, 33' 3"; 8 $\frac{1}{4}$ ", 547' 6"; 6-5/8", 1994';  
 5-3/16", 2210' 3".  
 Packer, 6-5/8 x 8 $\frac{1}{2}$  x 10, set at 1978'.  
 Packer, 5-3/16 x 6-5/8, set at 2192'.  
 No coal was encountered.  
 Abandonment reported to Dept. of Mines Feb. 13, 1931.  
 Well was shot twice in Weir Sand.  
 Salt water at 1450'.  
 Producing hole.

	Top.	Bottom.
Yellow mud (conductor)	0	- 33
Red rock	33	- 140
Sand	140	- 160
Red rock	160	- 500
Dunkard Sand	500	- 580
Black slate	580	- 610
White sand	610	- 760
Black slate	760	- 795
Lime	795	- 835
White sand	835	- 855
Lime	855	- 895
White sand	895	- 1000
Slate	1000	- 1015
Lime	1015	- 1070
Slate and shells	1070	- 1225
Sand	1225	- 1255
Slate	1255	- 1357
Sand	1357	- 1382
Slate	1382	- 1388
Salt Sand (water, 1450')	1388	- 1775
Break of slate and shell, 1560-1600'		
White slate	1775	- 1780
Lime	1780	- 1800
Slate	1800	- 1805
Maxton Sand	1805	- 1910
Little Lime	1910	- 1950
Slate	1950	- 1955
Lime shell	1955	- 1970
Pencil Cave	1970	- 1973
Big Lime	1973	- 2112
Big Injun Sand (gas, 2113-2120')	2112	- 2158
Slate	2158	- 2187
Sand shell	2187	- 2197
Slate and shell	2197	- 2280
Weir Sand (oil, 2282-2284'; oil, 2286-2289')	2280	-(2292)
Total depth		2292