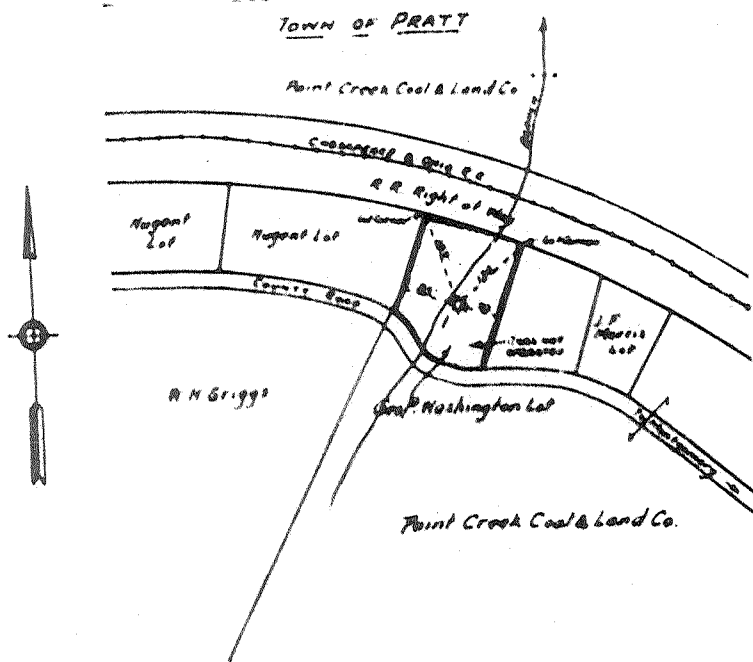


I, the undersigned hereby certify that this map is true and correct, and shows all the information required by Oil & Gas law, Acts of 1929.

*G.A. Cunningham*

Acknowledged before me a \_\_\_\_\_ Notary Public \_\_\_\_\_ of  
Kanawha County, W. Va. this 27 day of \_\_\_\_\_, 1931  
My Commission expires May 25, 1933



Geo. P. Washington  
Well No. 1  
Cabin Creek District  
Kanawha County, W. Va.  
Jan. 27, 1931

**MULLINS GAS CO.**  
MAP SHOWING  
WELL TO BE ABANDONED  
SCALE :- 1 INCH = 200 FEET

*Handwritten notes and arrows pointing to the well location on the map.*

31

"MARGRET DOLEMAN" well drilled by Ramsey & Thompson at PRATT, W.VA.

Drilling commenced May 29, 1925 - completed July 6, 1925.

WEIR POLE - plugged and abandoned, July 6, 1925.

Sand & Gravel	0	-	62
Sand	62	-	130
Slate	120	-	130
Sand	180	-	250
Slate	250	-	350
Sand (grampus)	350	-	520
Slate	520	-	665
Salt Sand	665	-	800
Coal	800	-	895
Coal	895	-	890
Slate	890	-	890
Lime	890	-	900
Red Rock	900	-	940
Lime	940	-	1000
Red Rock	1000	-	1040
Slate & Shells	1040	-	1170
Maxon Sand	1170	-	1310
Little Lime	1310	-	1360
Slate	1360	-	1365
Lime Shells	1365	-	1370
Slate	1370	-	1380
Big Lime	1380	-	1605
Red Rock	1605	-	1635
Slate & shells	1635	-	1655
Weir Sand	1655	-	1835
Slate	1835	-	1845
Total Depth	1845	-	

REMARKS:  
 (Hole filled to top of Weir Sand, with broken rock and sand pumpings set M. & F. wooden plug, then filled hole with broken rock and sand pumpings and set Lead plug with Iron Mandrel and run on plug with tools for one hour until Gas was completely shut off.  
 Pulled 6-5/8 casing and set M. & F. wooden plug at top of Maxon sand. Pulled 10 inch casing and filled hole with rock to top.

"GEORGE F. WASHINGTON" well drilled by Smith & Maebon at PRATT, W.VA.

Drilling commenced June 1925 - completed July 18, 1925.

Big Lime	1400	-	1610
Big Injun	1610	-	1670
Slate	1670	-	1680
Weir Sand	1680	-	1835
Slate	1835	-	1838
Bottom Hole	1838	-	

REMARKS:  
 (10" casing - 2 jts. 40 ft. left in.  
 ( 8" casing - 926 ft. pulled out.  
 ( 6,5/8 casing - 1436 ft. set with Oil Well packer.

GAS PAY	1705	-	1715. 1/4 million.
	1750	-	1760. 1/4 million.
	1788	-	1805. 1 million 200 thousand.
	1805	-	1838. 1 million 700 thousand.

Packer set at 1837 ft.

Preforation	1744	-	1747.
	1791	-	1805.

Two holes cut with welder 1833 to 1834.

Packed with "Chromical sleeve gas packer" 6,5/8 by 3 inch anchor packer.

21-A

Mullins Gas Company  
 Low Davis,  
 Charleston, West Va.

Company  
 Address

COMPLETION DATA SHEET  
 NO. 2  
 FORMATION RECORD

KM 31-1

Name	Color	Character	Oil, Gas or Water	Top	Bottom	Thickness	Total Depth	Remarks
Big Lime				1400	1610			
Big Injun				1610	1670			
Slate				1670-	1680			
Leir Sand				1680	1838			
Slate				1838	1838			
Total Depth							1838	

Well was not shot at.....feet; well was shot at.....feet.

Salt  
 Fresh water at.....feet; fresh water at.....feet.

Well was producing hole.  
 dry

January 28, 1931  
 Date

Approved

Mullins Gas Co.

Owner

NOTE: All bottom formations must be noted as indicated above and all key-rocks and oil and gas sands must be recorded under their proper geological names in the district as well as any local names commonly used in the district for such strata.

31A

Cabin Creek District, Kanawha County, W. Va.

By Mullins Gas Co., Lou Davis, Agent, Charleston, W. Va.

On 3/4-acre lot, town of Pratt; surface and mineral rights owned by  
George P. Washington, Pratt, W. Va.

Well was completed July 18, 1925.

No elevation given.

13" conductor, 16'; 10" casing, 40'; 8", 926'; 6-5/8", 1436'.

Abandonment reported to Dept. of Mines Jan. 28, 1931.

	Top.	Bottom.
Big Lime	1400	- 1610
Big Injun Sand	1610	- 1670
Slate	1670	- 1680
Weir Sand	1680	- 1835
Slate, to bottom	1835	- 1838