

SOUTH FERN OIL COMPANY  
PROPOSED ABANDONMENT

M. A. Cobb well No. 5 - Big Sandy District, Kanawha County, West Virginia.

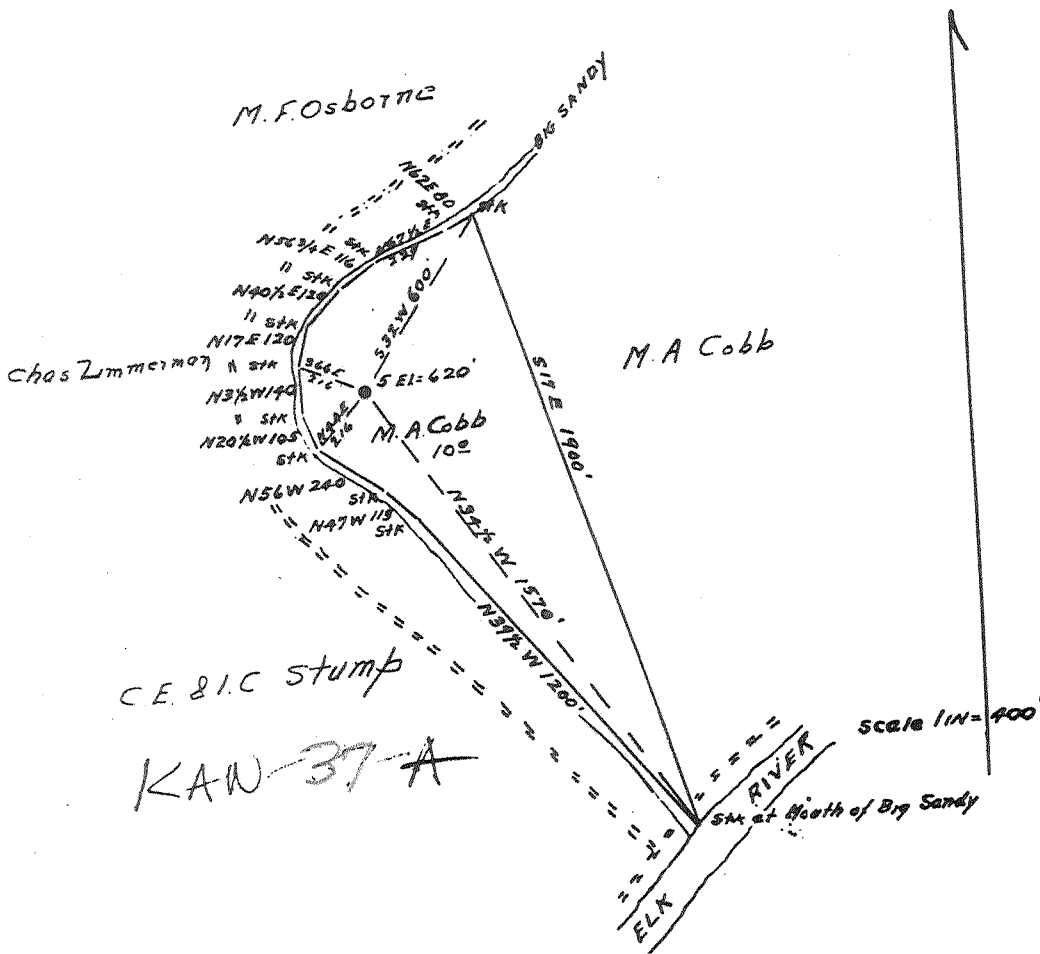
ENGINEER'S CERTIFICATE

I, the undersigned, hereby certify that this map is true and correct and shows all the information to the best of my knowledge and belief as required by the oil and gas section of the mining laws of West Virginia.

W. J. [Signature]  
Engineer

Acknowledged before me a Notary Public this 8th day of May, 1931.  
My commission expires March 30, 1935.

John F. Nigman  
Notary Public



Big Sandy District, Kanawha County, W. Va.  
 By South Penn Oil Co., P. O. Drawer 1255, Pittsburgh, Pa.  
 On 10 acres, surface and mineral rights owned by M. A. Cobb,  
 Clendenin, W. Va.

Elevation, 620' L.

10" casing, 47'; 8 $\frac{1}{4}$ " 424'; 6-5/8" 1335'.

Lead packer, 6-5/8 x 8 $\frac{1}{4}$ , set at 1324'.

Coal was encountered at 120-124'.

Abandonment reported to Dept. of Mines May 8, 1931.

Well was shot in Weir Sand.

Salt water at 800'.

Producing hole.

	Top.	Bottom.
Slate	0	- 120
Native coal	120	- 124
Slate	124	- 395
Sand	395	- 410
Slate	410	- 530
Sand	530	- 585
Coal	585	- 587
Lime	587	- 725
Gas Sand	725	- 778
Slate	778	- 780
Salt Sand (hole full water, 800')	780	- 1120
Slate	1120	- 1122
Lime	1122	- 1167
Maxton Sand	1167	- 1264
Little Lime	1264	- 1296
Slate	1296	- 1298
Lime shells	1298	- 1310
Pencil Cave	1310	- 1320
Big Lime	1320	- 1460
Big Injun Sand	1460	- 1480
Weir Sand (oil, 1698-1704')	1550	- 1704
Slate, to bottom	1704	- 1709