

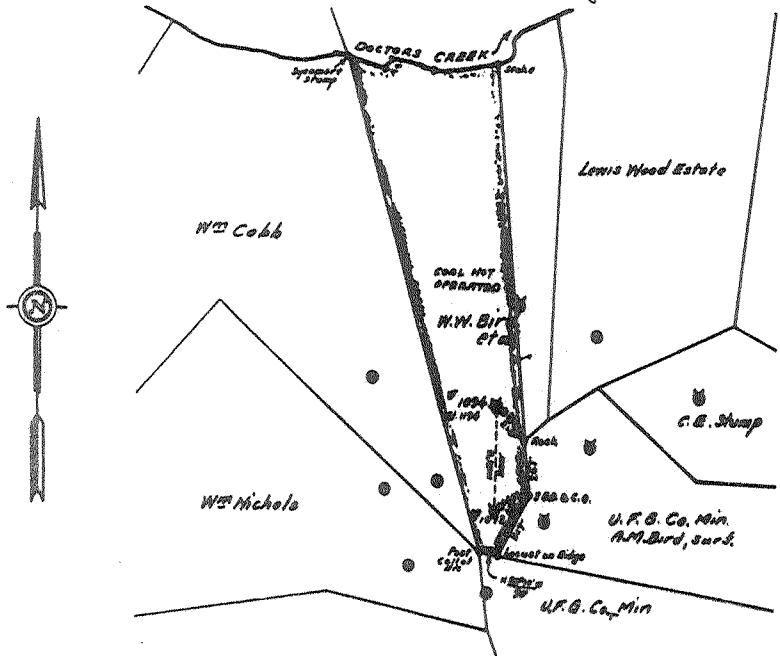
I, the undersigned, hereby certify that this map is correct and shows all the information to the best of my knowledge and belief, required by the Oil and Gas Section of the State Laws of West Virginia.

G. Abner Birmingham
Engineer

Acknowledged before me, a Notary Public of Kanawha County, W. Va.

This 3rd day of March 1933.

My commission expires Dec. 25, 1940 *J. L. ...*



W.W. Bird et al
Well No. 1094
Big Sandy District
Kanawha County, W. Va.
March 1, 1933

KAN-101-A

VIRGINIAN GASOLINE & OIL CO.
MAP SHOWING
WELL TO BE ABANDONED
SCALE:-1 INCH = 660 FEET

Big Sandy District, Kanawha County, W. Va.
 By Virginian Gasoline & Oil Co., Charleston, W. Va.
 On 31 acres, surface owned by J. B. Rollins et al., Clendenin,
 W. Va., and mineral rights by Ethel C. Fisher et al.,
 Clendenin, W. Va.

Well was completed Oct. 6, 1919.

Elevation, 1194' B.

10" casing, 18'; 8 $\frac{1}{4}$ ", 558'; 6-5/8", 1968'; 5-3/16", 2161'.

No coal was encountered.

Well was shot at 2302-2352'.

Producing hole. Abandonment reported to Dept. of Mines Mar. 1, 1933.

	Top.	Bottom.	Thickness.
Sand, blue	0	18	18
Sandrock	18	125	107
Sand	125	470	345
Red rock	470	500	30
Lime shell	500	558	58
Sand	558	690	132
Slate	690	730	40
Sand	730	900	170
Slate	900	925	25
Sand	925	975	50
Slate	975	1000	25
Sand	1000	1100	100
Lime shell, black	1100	1220	120
Sand	1220	1260	40
Slate and shell	1260	1380	120
Sand	1380	1405	25
Slate	1405	1410	5
Salt Sand	1410	1765	355
Cave	1765	1770	5
Slate and shell	1770	1810	40
Maxton Sand	1810	1940	130
Little Lime	1940	1955	15
Pencil Cave	1955	1964	9
Big Lime	1964	2098	134
Big Injun Sand (gas, 2100-2117')	2098	2128	30
Slate and shell	2128	2302	174
Weir Sand (oil pay, 2302-2305')	2302	2352	50
Lime, black	2352	2362	10
Slate, to bottom	2362	2368	6