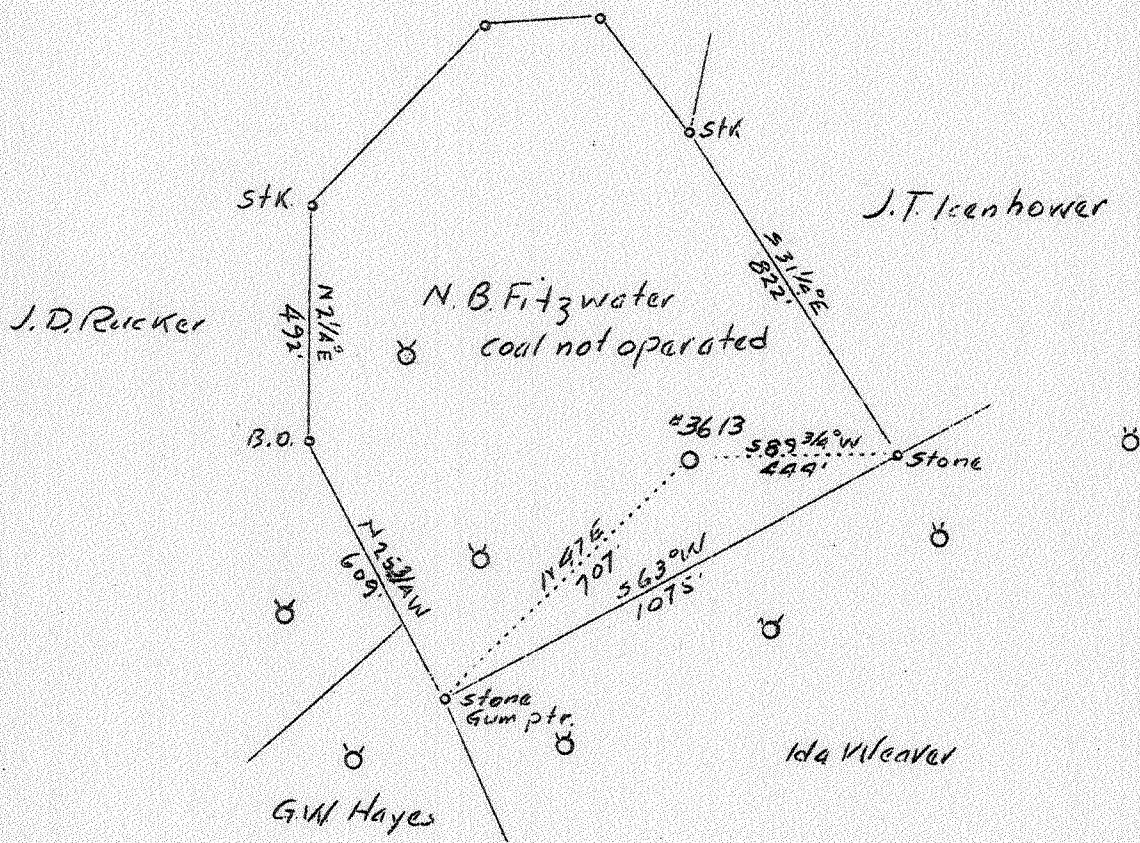


LATITUDE 38° 30'

LONGITUDE 81° 20'



Company VIRGINIAN GASOLINE & OIL CO.  
 Address Charleston, W. Va.  
 Farm N. B. FITZWATER  
 Tract Acres 24.5 Lease No. 12342  
 Well (Farm) No. 2 Serial No. 3613  
 Elevation (Spirit Level) 891.7  
 Quadrangle Clendenin  
 County Kanawha District Big Sandy  
 Engineer G. A. Cunningham  
 Engineer's Registration No. 659  
 File No. 74-69 Drawing No.   
 Date Feb. 12, 1937 Scale 1" = 400'

STATE OF WEST VIRGINIA  
 Department of Mines  
 Oil and Gas Division  
 Charleston  
 WELL LOCATION MAP  
 File No. KAN-203A  
 + Denotes location of well on U. S. Topographic Maps, scale 1 to 62,500 latitude and longitude lines being represented by border lines as shown.  
 - Denotes one inch spaces on border line of original tracing.

203A

Big Sandy District, Kanawha County, W. Va.

By Virginian Gasoline &amp; Oil Co., Box 1256, Charleston, W. Va.

On 24 acres, on Jordan Creek.

Elevation, 891.7' L.

Surface owned by N. B. Fitzwater, Clendenin, W. Va., and mineral rights by N. B. Fitzwater et al., Clendenin, W. Va.

Drilling commenced April 27, 1920; completed, June 23, 1920.

Shot June 30, 1920, at 2051'.

10" casing, 17'; 8 $\frac{1}{4}$ " 330' (pulled); 6 $\frac{5}{8}$ " 1692'; 5 $\frac{3}{8}$ " 1860'.

B. H. packer.

Oil well. Abandonment reported to Dept. of Mines Feb. 12, 1937.

5 bbls. 1st 24 hrs.

Record to RCF from Dept. of Mines 4-30-37.

	Top.	Bottom.
Conductor	0	17
Slate and shale	17	1090
Gas Sand	1090	1130
Slate	1130	1155
Salt Sand	1155	1500
Slate	1500	1510
Lime	1510	1540
Slate	1540	1545
Lime	1545	1560
Slate	1560	1565
Lime	1565	1595
Slate	1595	1600
Lime	1600	1608
Slate	1608	1615
Marton Sand	1615	1635
Little Lime	1635	1665
Slate	1665	1669
Lime shale	1669	1679
Pencil Cave	1679	1680
Big Lime	1680	1815
Slate	1815	1820
Big Injun Sand	1820	1860
Slate	1860	1880
Lime	1880	1900
Slate and shell	1900	2045
Weir Sand (black oil, 2046'; green oil, 2051')	2045	2075
Total depth		2080

WEST VIRGINIA DEPARTMENT OF MINES  
OIL AND GAS DIVISION

434

WELL RECORD

Permit No. KAN-203-A

Oil or Gas Well Oil  
(Kind)

Company VIRGINIAN GASOLINE & OIL CO.  
 Address Box 1256, Charleston, W. Va.  
 Farm N.B. Fitzwater Acres 24  
 Location (waters) Jordan Creek  
 Well No. 3613 Elev. 891.7  
 District Big Sandy County Kanawha  
 The surface of tract is owned in fee by N.B. Fitzwater Address Clendenin, W. Va.  
 Mineral rights are owned by N.B. Fitzwater et al Address Clendenin, W. Va.  
 Drilling commenced April 27, 1920  
 Drilling completed June 23, 1920  
 Date shot June 30, 1920 Depth of shot 2051  
 Open Flow /10ths Water in \_\_\_\_\_ Inch  
 /10ths Merc. in \_\_\_\_\_ Inch  
 Volume \_\_\_\_\_ Cu. Ft.  
 Rock Pressure \_\_\_\_\_ lbs. \_\_\_\_\_ hrs.  
 Oil 5 bbls., 1st 24 hrs.  
 Fresh water \_\_\_\_\_ feet  
 Salt water \_\_\_\_\_ feet

Casing and Tubing	Used in Drilling	Left in Well	Packers
Size			
16.			Kind of Packer
13.			<u>B.H.</u>
10.	<u>17</u>	<u>17</u>	Size of
8 1/4	<u>330</u>	<u>-</u>	Depth set
6 5/8	<u>1692</u>	<u>1692</u>	
5 3/16	<u>1860</u>	<u>1860</u>	
3.			Perf. top
2.			Perf. bottom
Liners Used			Perf. top
			Perf. bottom

CASING CEMENTED \_\_\_\_\_ SIZE \_\_\_\_\_ No. FT. \_\_\_\_\_ Date \_\_\_\_\_  
 COAL WAS ENCOUNTERED AT \_\_\_\_\_ FEET \_\_\_\_\_ INCHES  
 \_\_\_\_\_ FEET \_\_\_\_\_ INCHES FEET \_\_\_\_\_ INCHES  
 \_\_\_\_\_ FEET \_\_\_\_\_ INCHES FEET \_\_\_\_\_ INCHES

Formation	Color	Hard or Soft	Top	Bottom	Oil Gas or Water	Depth Found	Remarks
Conductor				17			
Slate & Shale			17	1090			
Gas Sand			1090	1130			
Slate			1130	1155			
Salt Sand			1155	1500			
Slate			1500	1510			
Lime			1510	1540			
Slate			1540	1545			
Lime			1545	1560			
Slate			1560	1565			
Lime			1565	1595			
Slate			1595	1600			
Lime			1600	1608			
Slate			1608	1615			
Maxon Sand			1615	1635			
Little Lime			1635	1665			
Slate			1665	1669			
Lime Shale			1669	1679			
Pencil Cave			1679	1680			
Big Lime			1680	1815			
Slate			1815	1820			
Injun Sand			1820	1860			
Slate			1860	1880			
Lime			1880	1900			
Slate & Shell			1900	2045	Black Oil	2046	
Weir Sand			2045	2075	Green Oil	2051	
Total Depth				2080			

