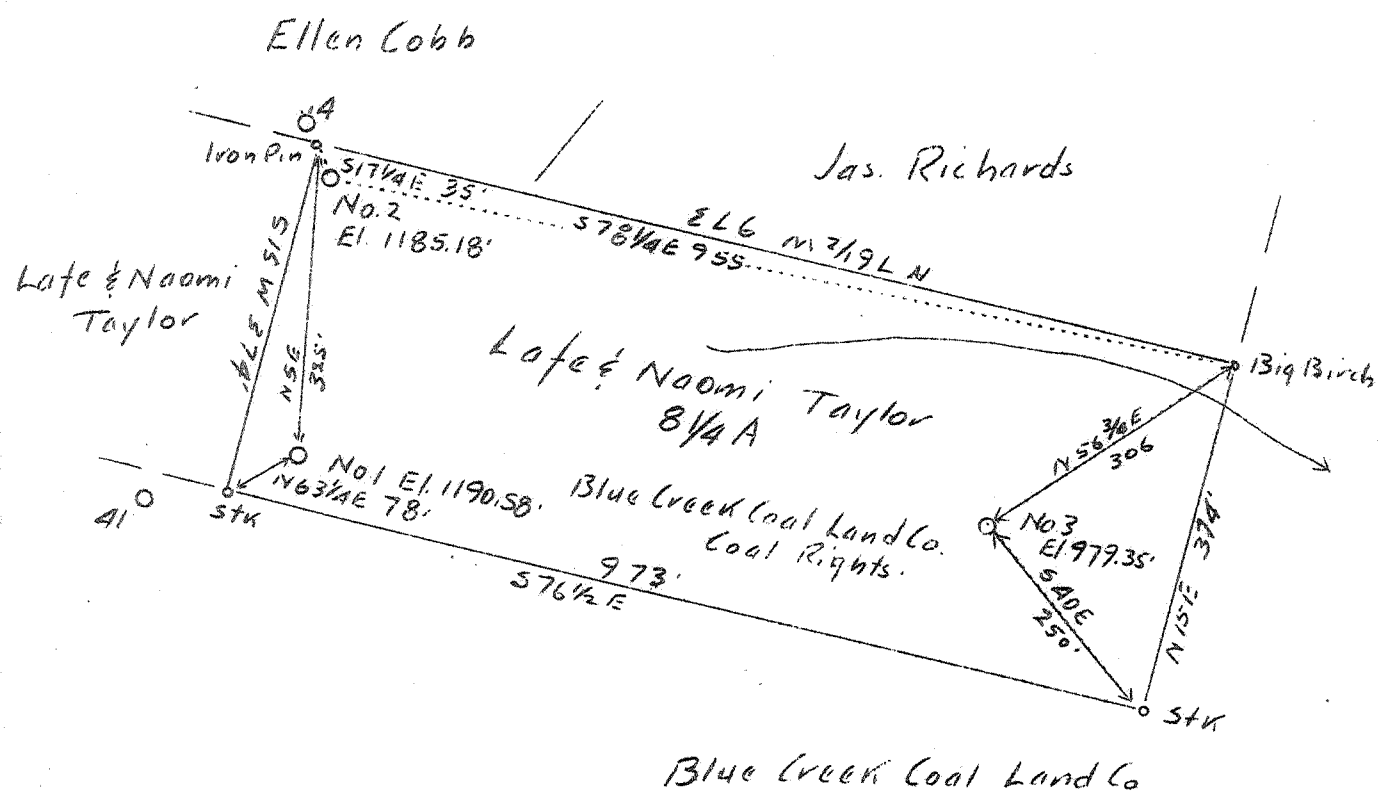


LATITUDE 38° + 25'

LONGITUDE 81° 20'



Abandonment

Company	South Penn Oil Co
Address	411 7th Ave., Pittsburgh, Pa.
Farm	Mary E. Mumdock
Tract	Acres 8 Lease No. 62778
Well (Farm) No.	2 Serial No.
Quadrangle	Clendenin
County	Kenawha
District	Elk
Engineer	E. C. Tabler
Engineer's Registration No.	
File No.	Drawing No.
Date	5-4-37 Scale 1 In. - 200'

STATE OF WEST VIRGINIA
 Department of Mines
 OIL AND GAS DIVISION
 Charleston

WELL LOCATION MAP

File No. KAN-210A

Denotes location of well on U. S. Topographic Maps, scale 1 to 62,500 latitude and longitude lines being represented by border lines as shown.

Denotes one inch spaces on border line of original tracing.