

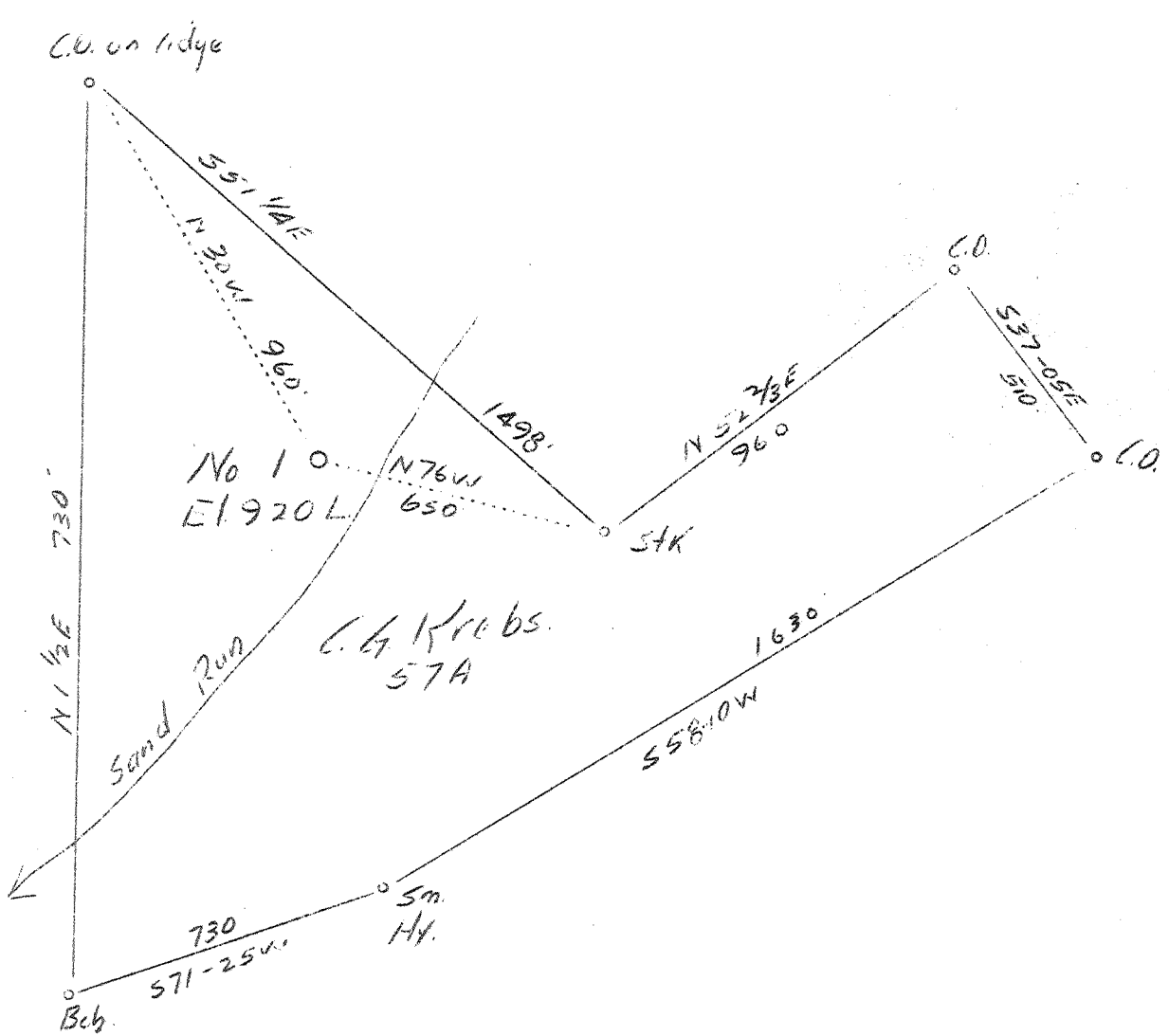
0 1 2 3 LATITUDE 38° 30'

1

2

3

LONGITUDE 81° 20'



4.34 W  
0.98

*Abandonment.*

Company	C.G. Krebs
Address	Charleston, W.Va.
Farm	C.G. Krebs
Tract	Acres 57 Lease No.
Well (Farm) No.	1 Serial No.
Quadrangle	Clendenin <i>CC</i>
County	Kanawha
District	Big Sandy
Engineer	C. E. Krebs
Engineer's Registration No.	9
File No.	11-488 Drawing No.
Date	8-4-37 Scale 1"-400'

STATE OF WEST VIRGINIA  
Department of Mines  
OIL AND GAS DIVISION  
CHARLESTON

WELL LOCATION MAP  
File No. KAN-204A  
220A

Denotes location of well on United States Topographic Maps, scale 1 to 62,500, latitude and longitude lines being represented by border lines as shown.

Denotes one inch spaces on border line of original tracing.

*6-6-37*