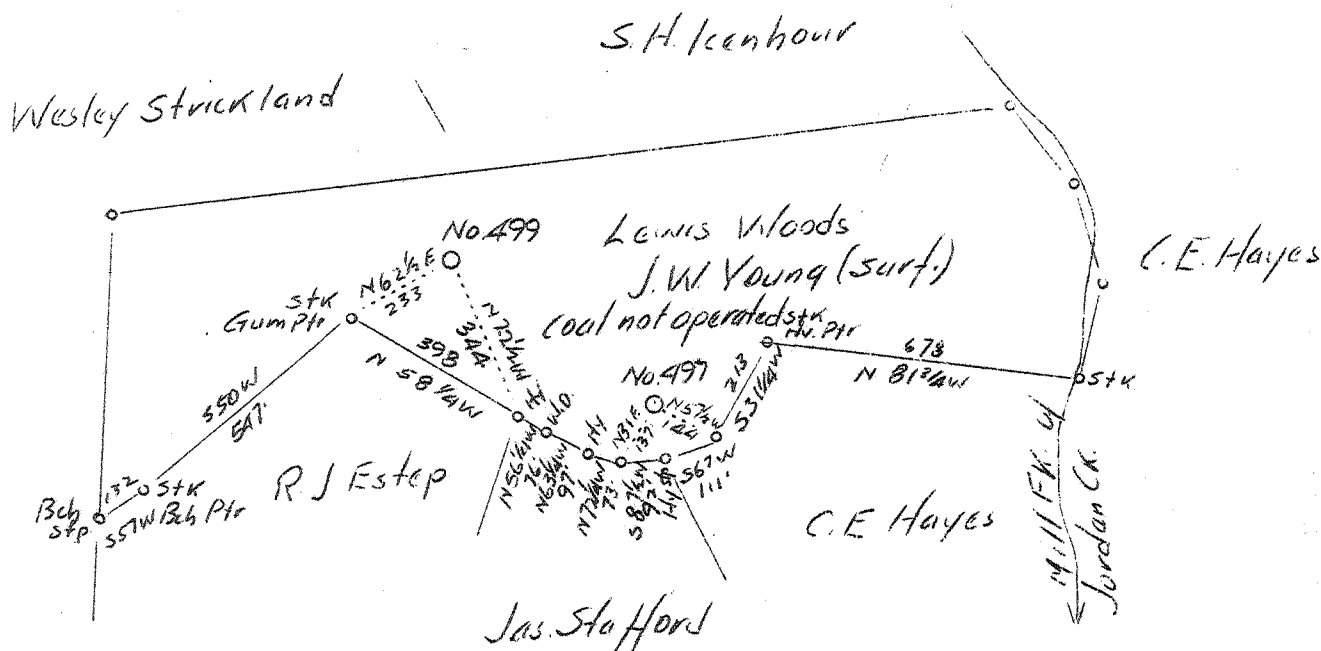


LATITUDE 38° 30'

LONGITUDE 81° 20'



# 3	2.8 W
# 497	1.28
# 5	2.83 W
# 499	1.19

Abandonments

AUG 30 1937

Company	Virginian Gasoline & Oil Co.
Address	Charleston, W. Va.
Farm	Lewis Woods
Tract	Acres 27 Lease No. 2183
Well (Farm) No.	5 & 5 Serial No. 497 & 499
Elevation (Barometer)	993' & 1060'
Quadrangle	Clendenin (NO)
County	Kanawha District Big Sandy
Engineer	G.A. Cunningham
Engineer's Registration No.	659
File No.	74-67 Drawing No.
Date	Aug. 17, 1937 Scale 1"-400'

STATE OF WEST VIRGINIA  
 Department of Mines  
 OIL AND GAS DIVISION  
 CHARLESTON

WELL LOCATION MAP

File No. KAN 222A & 223A

— Denotes location of well on United States Topographic Maps, scale 1 to 62,500, latitude and longitude lines being represented by border lines as shown.

— Denotes one inch spaces on border line of original tracing.