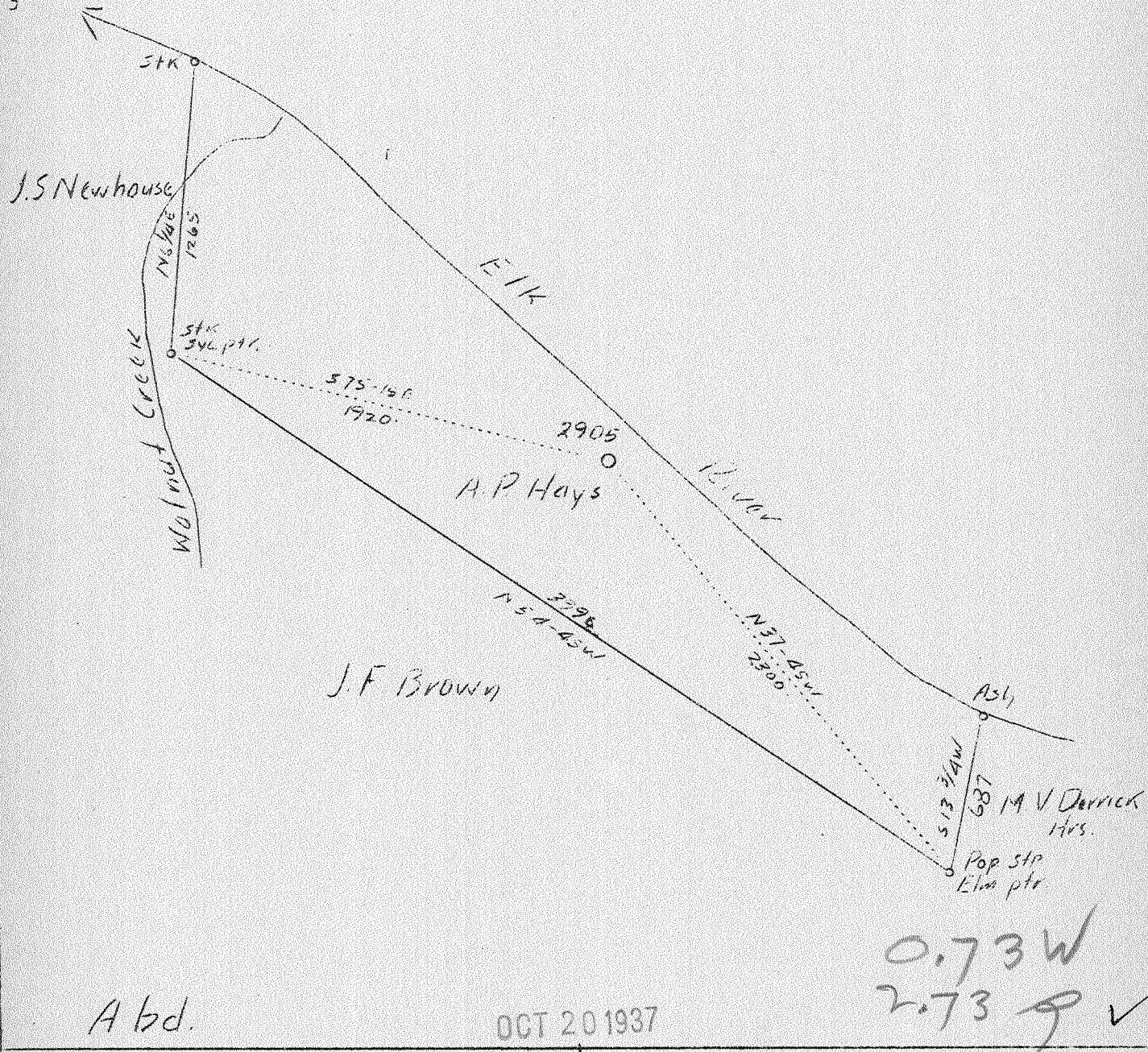


LATITUDE 38° 30'

LONGITUDE 81° 25'



A b d.

OCT 20 1937

0.73 W
2.73 S ✓

Company	Virginia Gasoline & Oil Co.
Address	Charleston, W. Va.
Farm	A.P. Hays
Tract	Acres 75 Lease No. 759
Well (Farm) No.	2 Serial No. 2905
Elevation (Spirit Level)	695'
Quadrangle	Clendenin
County	Kanawha District Big Sandy
Engineer	G.A. Cunningham
Engineer's Registration No.	659
File No.	72-67 Drawing No.
Date	Oct. 8, 1937 Scale 1"=660'

STATE OF WEST VIRGINIA
 Department of Mines
 OIL AND GAS DIVISION
 CHARLESTON

WELL LOCATION MAP

File No. KAN-227A

+ Denotes location of well on United States Topographic Maps, scale 1 to 62,500, latitude and longitude lines being represented by border lines as shown.

- Denotes one inch spaces on border line of original tracing.