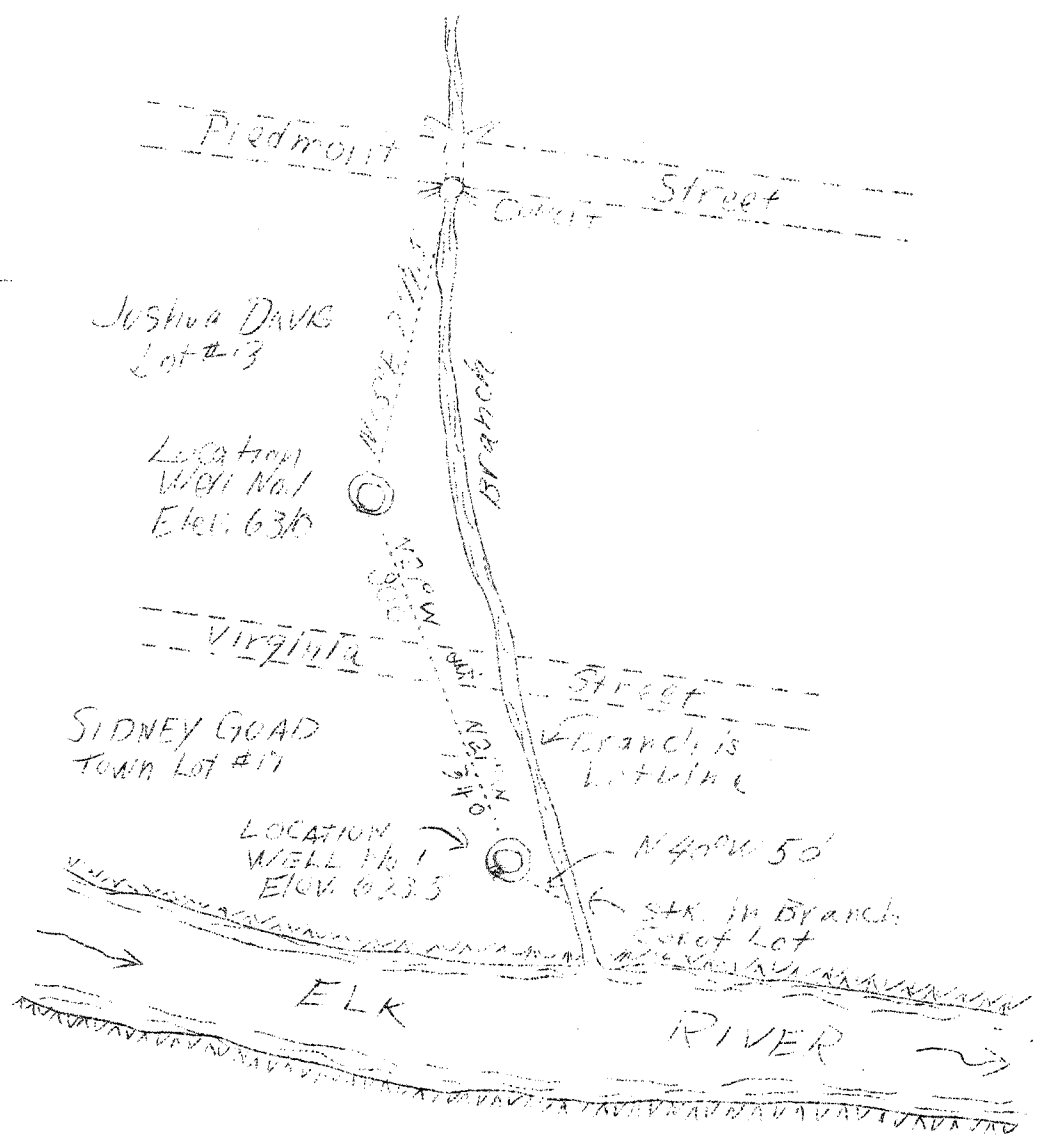


LATITUDE 38° 30'

LONGITUDE 81° 20'



1.36 W
1.17 Z

Abd.

Company Silman Oil Co.
 Address 311 Penna Ave., Charleston, W.Va.
 Farm Sidney Goad and Joshua Davis
 Tract 1 Acres Town Lot #17 & 13 Lease No. _____
 Well (Farm) No. 1 Serial No. _____
 Elevation (Spirit Level) 623.5 & 631'
 Quadrangle Clendennin N.E.
 County Kanawha District Big Sandy
 Engineer A.E. Price
 Engineer's Registration No. 819
 File No. _____ Drawing No. _____
 Date March 25, 1938 Scale 1"-165'

STATE OF WEST VIRGINIA
 Department of Mines
 OIL AND GAS DIVISION
 CHARLESTON

WELL LOCATION MAP
 File No. Kan-237-A

Denotes location of well on United States Topographic Maps, scale 1 to 62,500, latitude and longitude lines being represented by border lines as shown.

Denotes one inch spaces on border line of original tracing.