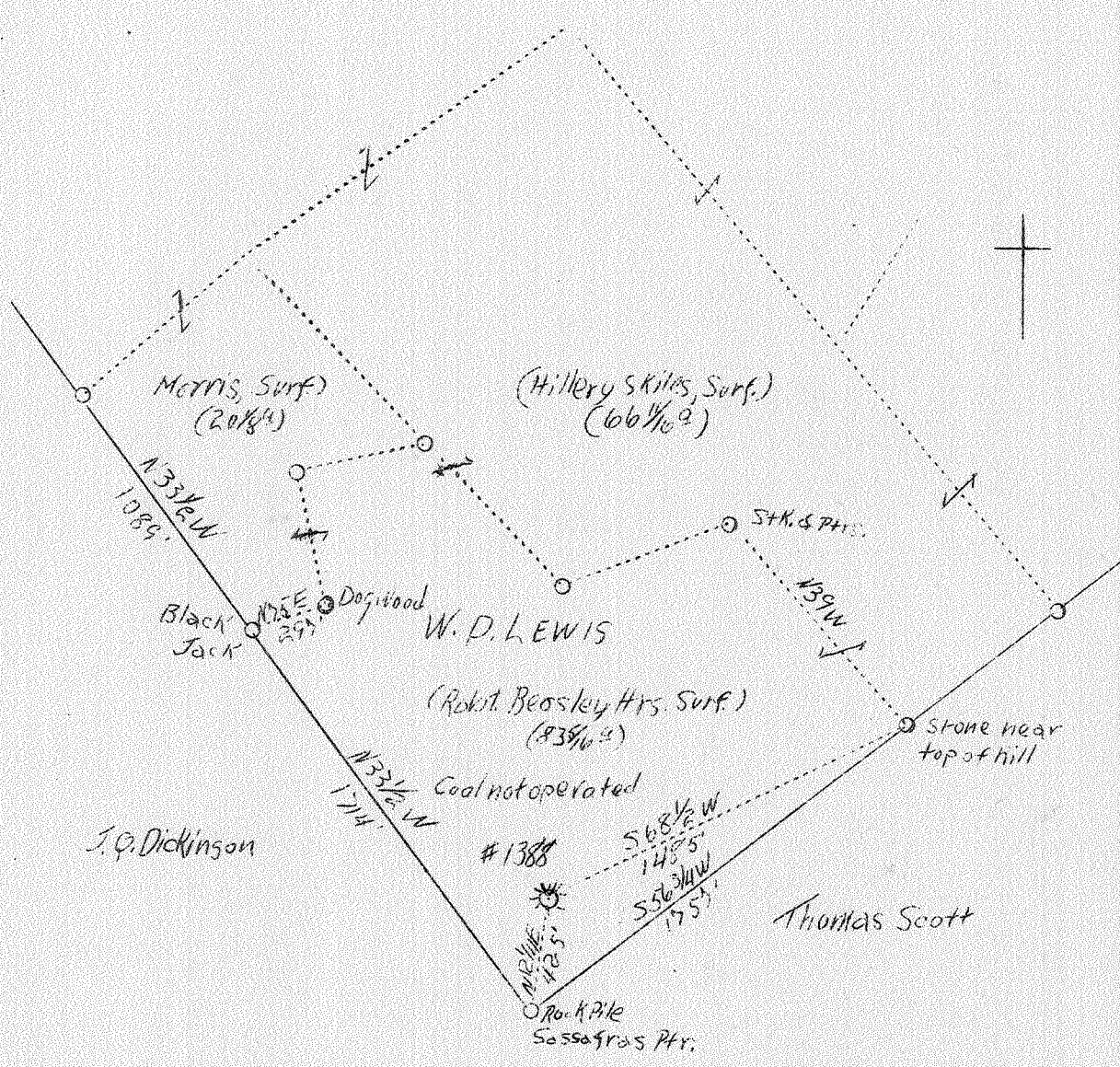


LATITUDE 38° 25'

LONGITUDE 81° 30'



ABD.

APR 25 1938

1.21 W
3.75 S

Company	Virginian Gasoline & Oil Co.
Address	Charleston, W.Va.
Farm	W.D.Lewis
Treat	Acres 500 Lease No. 19214
Well (Farm) No.	4 Serial No. 1388
Elevation (Bar.)	880
Quadrangle	Charleston
County	Kanawha District Malden
Engineer	G.A.Cunningham
Engineer's Registration No.	659
File No.	66-59 Drawing No.
Date	April 18, 1938 Scale 1"-660'

STATE OF WEST VIRGINIA
 Department of Mines
 OIL AND GAS DIVISION
 CHARLESTON

WELL LOCATION MAP

File No. Kan-240-A

Denotes location of well on United States Topographic Maps, scale 1 to 62,500, latitude and longitude lines being represented by border lines as shown.

Denotes one inch spaces on border line of original tracing.

240A

Malden District, Kanawha County, W. Va.

By Virginian Gasoline & Oil Co., Charleston, W. Va.

On 500 acres, on Elk Twomile Creek.

Elevation, 880' B.

Surface owned by James Biesley, Malden, W. Va., and minerals by
Jennie G. Lewis, Charleston, W. Va.

Drilling commenced March 9, 1925; completed, May 12, 1925.

Shot May 19, 1925, at 1950'.

Volume, 200,000 cu. ft.

Oil, 10 bbls., 1st 24 hrs.

8 $\frac{1}{2}$ " casing, 481' 5"; 6-5/8", 1775' 6".

Coal was encountered at 55-60 and 250-253'.

Oil well. Abandonment reported to Dept. of Mines April 15, 1938.

Record to RGT from Mrs. Griffith May 27, 1938.

	Top.	Bottom.
Sand	9	- 55
Coal	55	- 60
Sand	60	- 120
Slate	120	- 160
Slate and shell	160	- 250
Coal	250	- 253
Slate and shell	253	- 450
Slate	450	- 650
Gas Sand	650	- 1020
Slate and shell	1020	- 1055
Sand	1055	- 1280
Slate and shell	1280	- 1430
Maxton Sand	1430	- 1465
Slate	1465	- 1470
Little Lime	1470	- 1500
Slate	1500	- 1507
White shell	1507	- 1520
Pencil Cave	1520	- 1523
Big Lime	1523	- 1690
Keener Sand	1690	- 1725
Big Injun Sand	1725	- 1755
Lime shell	1755	- 1785
Slate	1785	- 1795
Weir Sand (oil)	1795	- 1961
Slate	1961	- 1970
Total depth		1970

WEST VIRGINIA DEPARTMENT OF MINES
OIL AND GAS DIVISION

640

WELL RECORD

Permit No. KAN-240-A

Oil or Gas Well Oil
(Kind)

Company Virginian Gasoline and Oil Company
 Address Charleston, W.Va.
 Farm W. D. Lewis Acres 500
 Location (waters) Elk Two Mile Creek
 Well No. 1388 Elev. 880 Bar.
 District Malden County Kanawha
 The surface of tract is owned in fee by James Biesley
 Address Malden, W.Va.
 Mineral rights are owned by Jennie G. Lewis
 Address Charleston, W.Va.
 Drilling commenced March 9, 1925
 Drilling completed May 12, 1925
 Date shot May 19, 1925 Depth of shot 1950
 Open Flow /10ths Water in Inch
/10ths Merc. in Inch
 Volume 200,000 Cu. Ft.
 Rock Pressure 10 lbs. hrs.
 Oil 10 bbls., 1st 24 hrs.
 Fresh water feet feet
 Salt water feet feet

Casing and Tubing	Used in Drilling	Left in Well	Packers
Size			
16			Kind of Packer
13			
10			Size of
8 1/4	481'-5"	481'-5"	
6 5/8	1775'-6"	1775'-6"	Depth set
5 3/16			
3			Perf. top
2			Perf. bottom
Liners Used			Perf. top
			Perf. bottom

CASING CEMENTED SIZE No. FT. Date
 COAL WAS ENCOUNTERED AT 55 FEET 60 INCHES
250 FEET 36 INCHES
FEET INCHES FEET INCHES

Formation	Color	Hard or Soft	Top	Bottom	Oil Gas or Water	Depth Found	Remarks
and			9	55			
oal			55	60			
and			60	120			
late			120	160			
late & Shell			160	250			
oal			250	253			
late & Shell			253	450			
late			450	650			
as Sand			650	1020			
late & Shell			1020	1055			
and			1055	1280			
late & Shell			1280	1430			
axon Sand			1430	1465			
late			1465	1470			
ittle Lime			1470	1500			
late			1500	1507			
hite Shell			1507	1520			
encil Cave			1520	1523			
ig Lime			1523	1690			
eenner			1690	1725			
njun			1725	1755			
ime Shell			1755	1785			
late			1785	1795			
ir			1795	1961	Oil		
late			1961	1970			
otal Depth				1970			

MAY 27 1938

