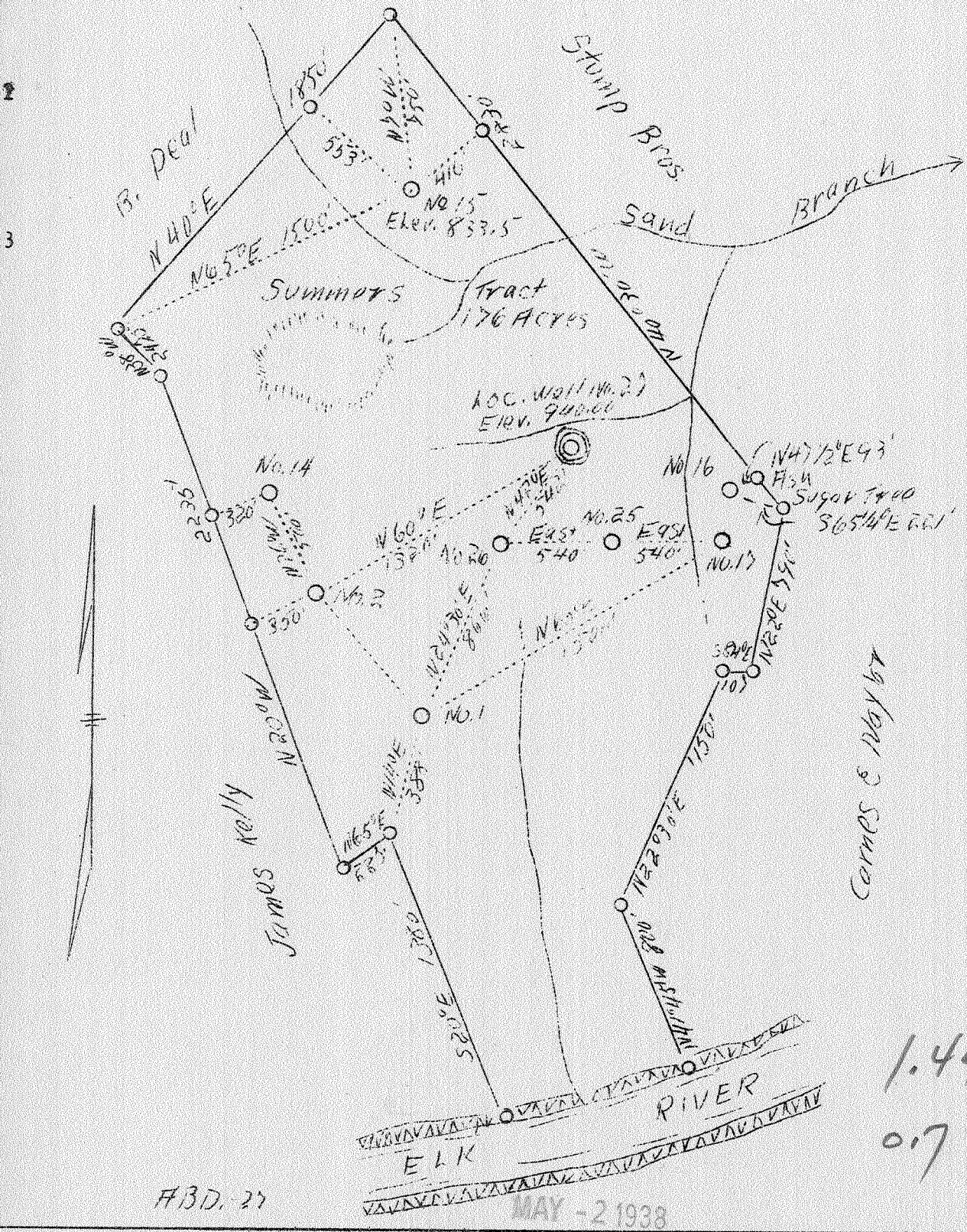


1 2 3

LATITUDE 38° 30'

LONGITUDE 81° 20'



F.B.D. 27

MAY - 2 1938

1.44 W
0.7 R

Company Silman Oil Co.
 Address Charleston, W.Va.
 Farm Summers (James F. Brown, May 38 DO E BOOK)
 Tract 1 Acres 176 Lease No. _____
 Well (Farm) No. 27 Serial No. _____
 Elevation (SpiritLevel) 940'
 Quadrangle Clendenin **NC**
 County Kanawha District Big Sandy
 Engineer A.E. Price
 Engineer's Registration No. 819
 File No. _____ Drawing No. _____
 Date 2-23-38 Scale 1"-40 Poles

STATE OF WEST VIRGINIA
 Department of Mines
 OIL AND GAS DIVISION
 CHARLESTON

241A B

WELL LOCATION MAP
 File No. Kan 247-H 241A

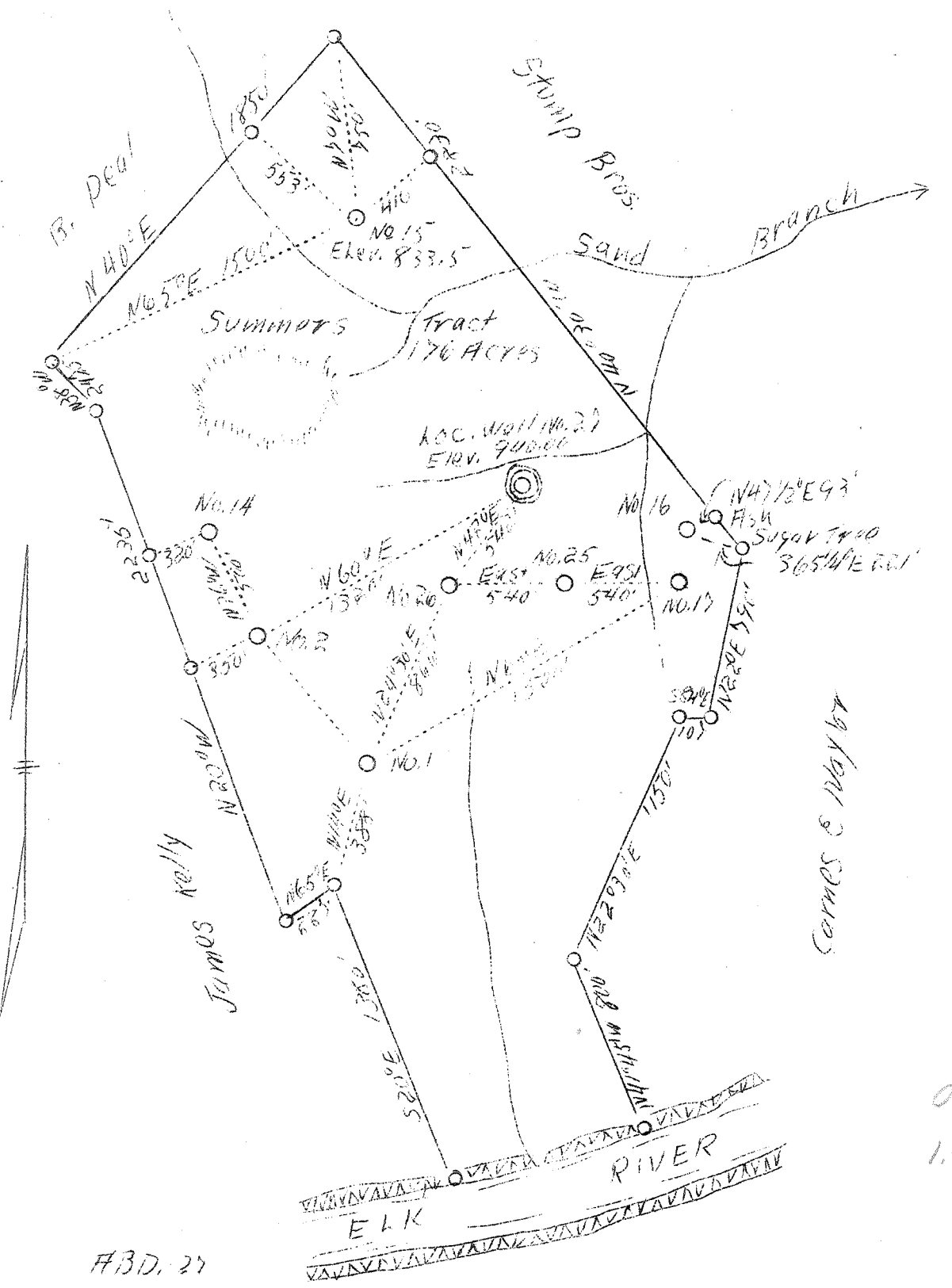
Denotes location of well on United States Topographic Maps, scale 1 to 62,500, latitude and longitude lines being represented by border lines as shown.

Denotes one inch spaces on border line of original tracing.

1 2 3

LATITUDE 38° 30'

LONGITUDE 81° 20'



#BD. 27

0.7 S
1.4 W

Company Silman Oil Co.
 Address Charleston, W.Va.
 Farm Summers
 Tract 1 Acres 176 Lease No. _____
 Well (Farm) No. 27 Serial No. _____
 Elevation (SpiritLevel) 940'
 Quadrangle Clendenin *N.C.*
 County Kanawha District Big Sandy
 Engineer A.E. Price
 Engineer's Registration No. 819
 File No. _____ Drawing No. _____
 Date 2-23-38 Scale 1"-40 Poles

STATE OF WEST VIRGINIA
 Department of Mines
 OIL AND GAS DIVISION
 CHARLESTON

WELL LOCATION MAP
 File No. Kan-247-H

Denotes location of well on United States Topographic Maps, scale 1 to 62,500, latitude and longitude lines being represented by border lines as shown.

Denotes one inch spaces on border line of original tracing.

Well 27