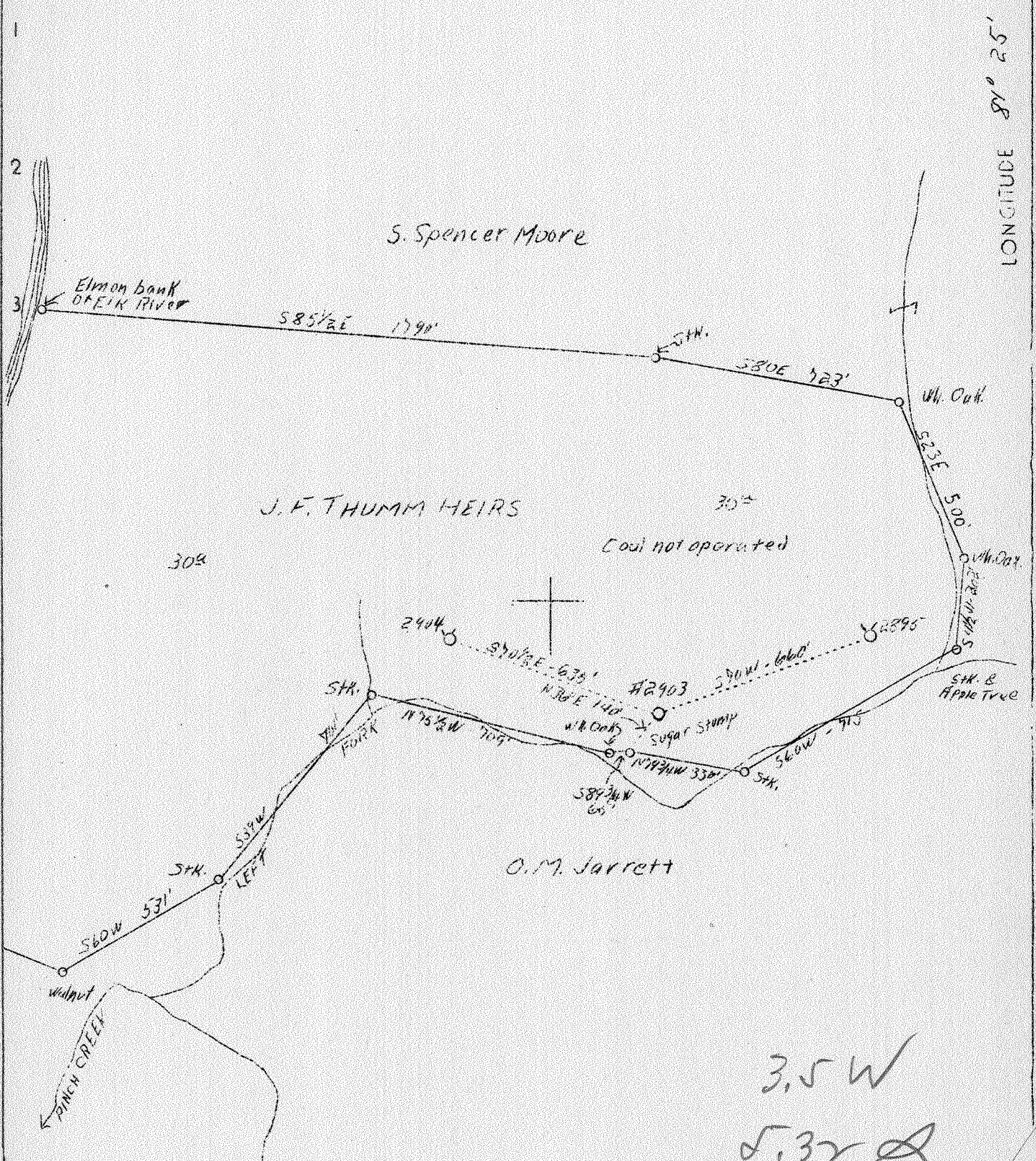


1 2 3

LATITUDE 38° 30'

LONGITUDE 81° 25'



ABD

MAY 30 1938

3.5 W
5.32

Company	Virginian Gasoline & Oil Co.
Address	Charleston, W. Va.
Farm	J. F. Thumm Heirs
Tract	Acres 30 Lease No. 21793
Well (Farm) No.	3 Serial No. 2903
Elevation	BAROMETER 693
Quadrangle	Clendenin
County	Kanawha District Elk
Engineer	G. A. Cunningham
Engineer's Registration No.	659
File No.	70-73 Drawing No.
Date	May 18, 1938 Scale 1" = 400'

STATE OF WEST VIRGINIA
 Department of Mines
 OIL & GAS DIVISION
 Charleston

WELL LOCATION MAP

File No. Kan-244-A

Denotes location of well on U. S. Topographic Maps, scale 1 to 62,500, latitude and longitude lines being represented by border lines as shown.

Denotes one inch spaces on border line of original tracing.

Elk District, Kanawha County, W. Va.
 By Virginian Gasoline & Oil Co., Charleston, W. Va.
 On 30 acres, on Pinch Creek.
 Elevation, 693' B.
 Surface and minerals owned by G. W. Thumm, Attorney-in-fact,
 Charleston, W. Va.
 Drilling commenced May 25, 1912; completed, July 6, 1912.
 Shot at 1759'.
 Oil, 960 bbls., 1st 24 hrs.
 8 $\frac{1}{2}$ " casing, 510' (pulled); 6-5/8", 1520'.
 Coal was encountered at 220-230 and 355-358'.
 Oil well. Abandonment reported to Dept. of Mines May 18, 1938.
 Record to RCT from Mrs. Griffith May 27, 1938.

	Top.	Bottom.
Sand	0	125
Broken sand	125	220
Coal	220	230
Slate	230	240
Sand	240	295
Slate	295	310
Limestone	310	325
Slate and shells	325	355
Coal	355	358
Slate	358	395
Sand	395	440
Slate	440	480
Sand	480	510
Slate	510	572
Sand	572	592
Slate	592	670
Sand	670	700
Slate	700	750
Black lime	750	815
Salt Sand	815	1315
Black lime	1315	1390
Maxton Sand	1390	1460
Little Lime	1460	1490
Slate	1490	1493
Lime	1493	1500
Slate	1500	1503
Lime	1503	1513
Pencil Cave	1513	1520
Lime	1520	1524
Big Lime	1524	1666
Big Injun Sand	1666	1686
Red lime	1686	1696
Slate and shells	1696	1756
Oil sand (Weir) (oil and gas, 1758')	1756	1782
Total depth		1782

WEST VIRGINIA DEPARTMENT OF MINES
OIL AND GAS DIVISION

647

WELL RECORD

Permit No. KAN-244-A

Oil or Gas Well Oil
(Kind)

Company Virginian Gasoline & Oil Company
 Address Charleston, West Virginia
 Farm J. F. Thumm Hrs. Acres 30
 Location (waters) Pinch Creek
 Well No. 2903 Elev. 693 Bar.
 District Elk County Kanawha
 The surface of tract is owned in fee by G. W. Thumm
 Attorney-in-Fact Address Charleston, W.Va.
 Mineral rights are owned by Same
 Address _____
 Drilling commenced May 25, 1912
 Drilling completed July 6, 1912
 Date shot _____ Depth of shot 1759
 Open Flow /10ths Water in _____ Inch
 /10ths Merc. in _____ Inch
 Volume _____ Cu. Ft.
 Rock Pressure _____ lbs. _____ hrs.
 Oil 960 bbls., 1st 24 hrs.
 Fresh water _____ feet _____ feet
 Salt water _____ feet _____ feet

Casing and Tubing	Used in Drilling	Left in Well	Packers
Size			
16			Kind of Packer
13			
10			Size of
8 1/4	<u>510</u>	<u>----</u>	
6 5/8	<u>1520</u>	<u>1520</u>	Depth set
5 3/16			
3			Perf. top
2			Perf. bottom
Liners Used			Perf. top
			Perf. bottom

CASING CEMENTED _____ SIZE _____ No. FT. _____ Date _____
 COAL WAS ENCOUNTERED AT 220 FEET 120 INCHES
 _____ FEET _____ INCHES 355 FEET 36 INCHES
 _____ FEET _____ INCHES _____ FEET _____ INCHES

Formation	Color	Hard or Soft	Top	Bottom	Oil Gas or Water	Depth Found	Remarks
Sand				125			
Broken Sand			125	220			
Coal			220	230			
Slate			230	240			
Sand			240	295			
Slate			295	310			
Limestone			310	325			
Slate & Shells			325	355			
Coal			355	358			
Slate			358	395			
Sand			395	440			
Slate			440	480			
Sand			480	510			
Slate			510	572			
Sand			572	592			
Slate			592	670			
Sand			670	700			
Slate			700	750			
Black Lime			750	815			
Salt Sand			815	1315			
Black Lime			1315	1390			
Saxon Sand			1390	1460			
Little Lime			1460	1490			
Slate			1490	1493			
Lime			1493	1500			
Slate			1500	1503			
Lime			1503	1513			
Pencil Cave			1513	1520			
Lime			1520	1524			
Big Lime			1524	1666			
Jun Sand			1666	1686			
Red Lime			1686	1696			
Slate & Shells			1696	1756			
Oil Sand			1756	1782			
Total Depth				1782	<u>Oil and Gas</u>	<u>1758'</u>	



