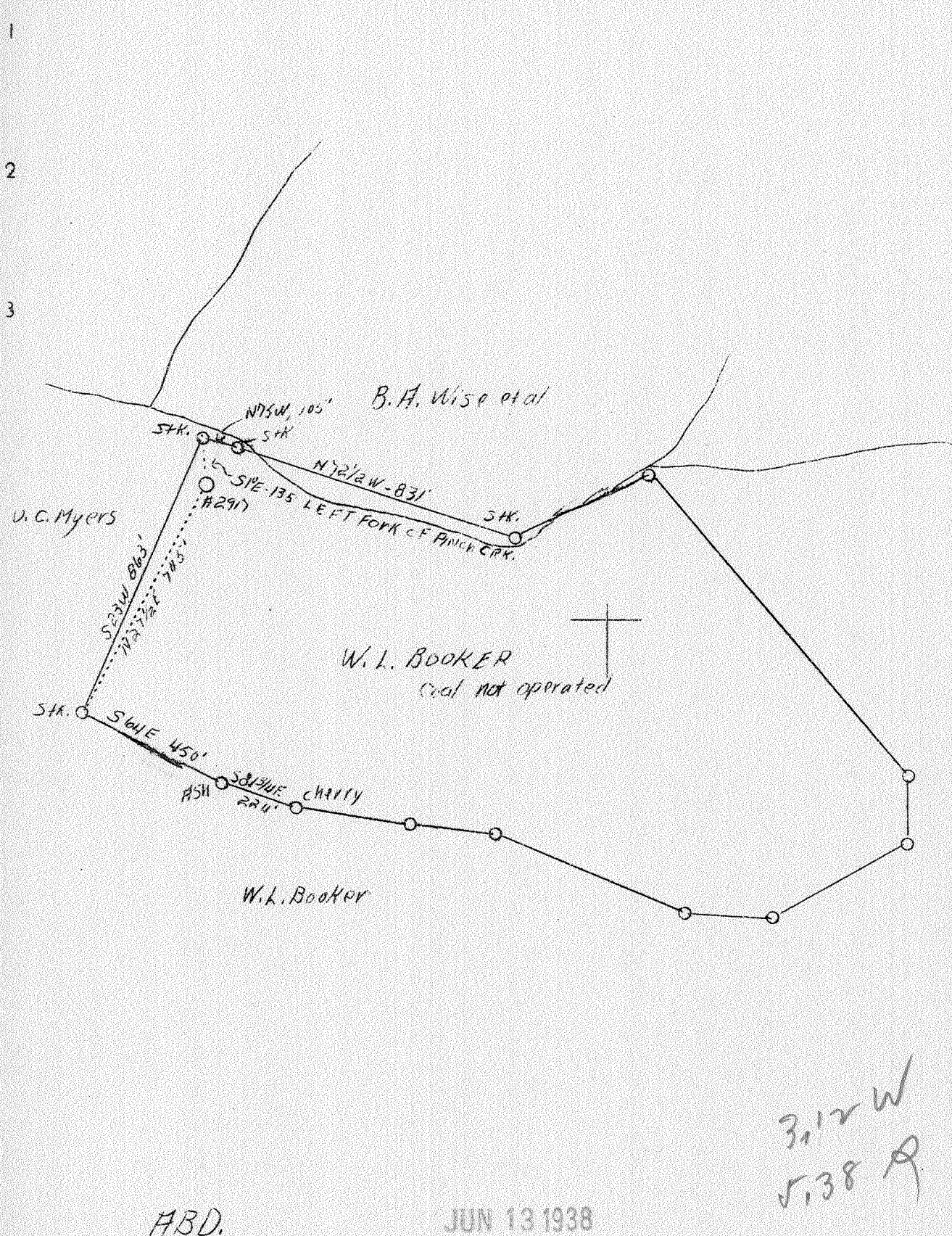


1 2 3

LATITUDE 38° 30'

LONGITUDE 81° 25'



ABD.

JUN 13 1938

Company	Virginian Gasoline & Oil Co.
Address	Charleston, W. Va.
Farm	W. L. Booker
Acres	97 - Lease No. 811
Well (Farm) No.	1 - Serial No. 2917
Elevation	716.0 (Spirit Level)
Quadrangle	Clendenin
County	Kanawha
District	Elk
Engineer	G. A. Cunningham
Eng. Reg. No.	659
File No.	70-63
Date	June 6, 1938
Scale	1" = 400'

*(NW)*

STATE OF WEST VIRGINIA  
 Department of Mines  
 OIL & GAS DIVISION  
 Charleston

WELL LOCATION MAP  
 File No. Kan-247-A

Denotes location of well on U. S. Topographic maps, scale 1 to 62,500, latitude and longitude lines being represented by border lines as shown.

Denotes one inch spaces on border line of original tracing.

6-6-2917

247A

Elk District, Kanawha County, W. Va.

By Virginian Gasoline &amp; Oil Co., Box 1256, Charleston, W. Va.

On 97 acres, on Left Fork of Pinch Creek.

Elevation, 716' L.

Surface and minerals owned by S. C. Conker, Agent, Station A,  
Charleston, W. Va.

Drilling commenced June 11, 1912; completed, July 14, 1912.

Shot April 17, 1926, at 1753-1775'.

Oil, 45 bbls.,

8½" casing, 380' (pulled); 6½", 1520'.

Callanan B. H. packer, 6½ x 8", set at 380'.

Oil well. Abandonment reported to Dept. of Mines June 6, 1938.

	Top.	Bottom.
Clay	0	14
Shale	14	300
Sand	300	340
Coal	340	345
Slate	345	360
Sand	360	440
Shale	440	520
Sand	520	600
Shale	600	800
Salt Sand	800	1365
Maxton Sand	1365	1455
Little Lime	1455	1485
Shale	1485	1495
Lime	1495	1505
Pencil Cave	1505	1510
Big Lime	1510	1680
Red rock	1680	1741
Slate and lime	1741	1753
Oil Sand (Squaw)	1753	1775½
Total depth		1775½

*W. L. Booker No. 247 A*

WEST VIRGINIA DEPARTMENT OF MINES  
OIL AND GAS DIVISION

653

WELL RECORD

Permit No. \_\_\_\_\_

Oil or Gas Well Oil  
(Kind)

Company Virginian Gasoline & Oil Company  
 Address Box 1256, Charleston, W. Va.  
 Farm W. L. Booker Acres 97  
 Location (waters) Left Frk. Pinch Creek  
 Well No. 2917 Elev. 716  
 District Elk County Kanawha  
 The surface of tract is owned in fee by S.C. Conker, Agt.  
Station A Address Charleston, W. Va.  
 Mineral rights are owned by Same  
 Address \_\_\_\_\_  
 Drilling commenced June 11, 1912  
 Drilling completed July 14, 1912  
 Date shot April 17, 1928 Depth of shot 1753-1775  
 Open Flow /10ths Water in \_\_\_\_\_ Inch  
 /10ths Merc. in \_\_\_\_\_ Inch  
 Volume \_\_\_\_\_ Cu. Ft.  
 Rock Pressure \_\_\_\_\_ lbs. \_\_\_\_\_ hrs.  
 Oil 45 bbls., 1st 22 hrs.  
 Fresh water \_\_\_\_\_ feet \_\_\_\_\_ feet  
 Salt water \_\_\_\_\_ feet \_\_\_\_\_ feet

Casing and Tubing	Used in Drilling	Left in Well	Packers
Size			Kind of Packer
16			Callanan, B. H.
13			Size of <u>6-5/8" x 8"</u>
10			Depth set <u>380</u>
8 1/4	<u>380</u>	<u>-</u>	Perf. top _____
6 5/8	<u>1520</u>	<u>1520</u>	Perf. bottom _____
5 3/16			Perf. top _____
3			Perf. bottom _____
2			Perf. top _____
Liners Used			Perf. bottom _____

CASING CEMENTED \_\_\_\_\_ SIZE \_\_\_\_\_ No. FT. \_\_\_\_\_ Date \_\_\_\_\_  
 COAL WAS ENCOUNTERED AT 340 FEET 60 INCHES  
 \_\_\_\_\_ FEET \_\_\_\_\_ INCHES \_\_\_\_\_ FEET \_\_\_\_\_ INCHES  
 \_\_\_\_\_ FEET \_\_\_\_\_ INCHES \_\_\_\_\_ FEET \_\_\_\_\_ INCHES

Formation	Color	Hard or Soft	Top	Bottom	Oil Gas or Water	Depth Found	Remarks
Clay				14			
Shale			14	300			
Sand			300	340			
Coal			340	345			
Slate			345	360			
Sand			360	440			
Shale			440	520			
Sand			520	600			
Shale			600	800			
Salt Sand			800	1365			
Maxon Sand			1365	1455			
Little Lime			1455	1485			
Shale			1485	1495			
Lime			1495	1505			
Pencil Cave			1505	1510			
Big Lime			1510	1680			
Red Rock			1680	1741			
Slate & Lime			1741	1753			
Oil Sand ( <i>deposited</i> )			1753	1775 1/2			
Total Depth				1775 1/2			

AUG 12 1928

