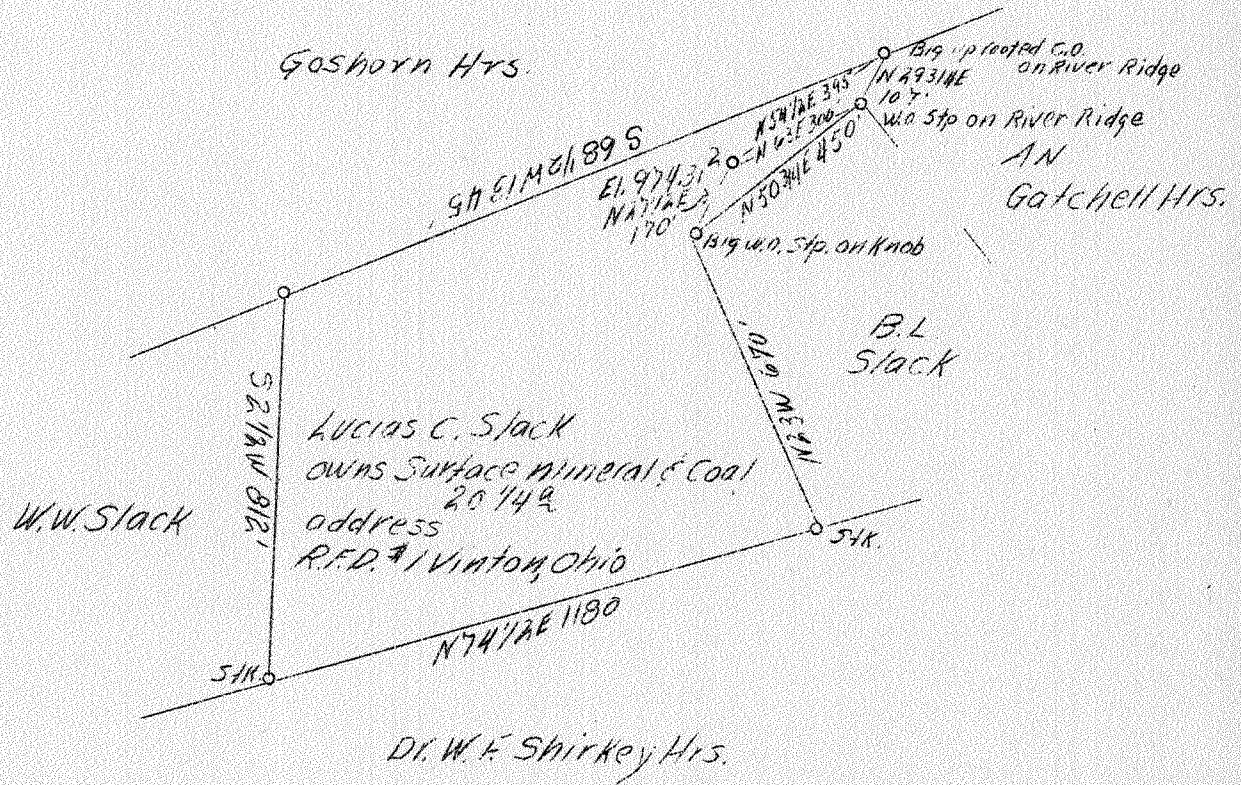


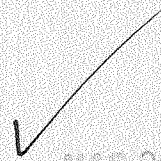
LATITUDE 38°25'



LONGITUDE 81°25'



4.43 W
0161 A



MAR 20 1939

Well to be abnd.

Company	South Penn Oil Co.
Address	411-7th Ave., Pgh., Pa.
Farm	Lucias C. Slack
Acres	58
Lease No.	65114
Well (Farm) No.	Two
Quadrangle	Clendenin
County	Kanawha
District	Elk
Engineer	E. C. Tabler
Eng. Reg. No.	-
Date	Feb. 9, 1939
Scale	400' - 1"

WC

STATE OF WEST VIRGINIA
 Department of Mines
 OIL & GAS DIVISION
 Charleston

WELL LOCATION MAP

File No. Kan-251-A

x Denotes location of well on U. S. Topographic Maps, scale 1 to 62,500, latitude and longitude lines being represented by border lines as shown.

- Denotes one inch spaces on border line of original tracing.

WEST VIRGINIA DEPARTMENT OF MINES
OIL AND GAS DIVISION

745

WELL RECORD

Permit No. 251-A

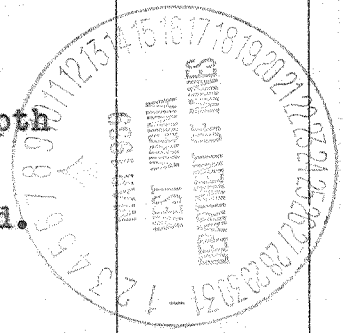
Oil or Gas Well OIL
(Kind)

Company SOUTH PENN OIL COMPANY
Address 411 Seventh Ave., Pittsburgh, Pa.
Farm Lucias C. Slack Acres 58
Location (waters) Elk River
Well No. 2 Elev. 974.31
District Elk County Kanawha
The surface of tract is owned in fee by Lucias C. Slack
R.F.D.No. 1 Address Vinton, Ohio.
Mineral rights are owned by Lucias C. Slack
R.F.D.No. 1 Address Vinton, Ohio.
Drilling commenced Oct. 3, 1912
Drilling completed Nov. 15, 1912
Date shot See below Depth of shot _____
Open Flow /10ths Water in _____ Inch
/10ths Merc. in _____ Inch
Volume _____ Cu. Ft.
Rock Pressure _____ lbs. _____ hrs.
Oil 10 bbls., 1st 24 hrs.
Fresh water _____ feet _____ feet
Salt water 1125 feet 1167 feet

Casing and Tubing	Used in Drilling	Left in Well	Packers
Size			
16			Kind of Packer
13			
10			Size of
8 1/4	<u>505</u>		
6 5/8	<u>1782'6"</u>		Depth set
5 3/16			
3			Perf. top
2			Perf. bottom
Liners Used			Perf. top
<u>Cond.</u>	<u>15'</u>		Perf. bottom

CASING CEMENTED _____ SIZE _____ No. FT. _____ Date _____
COAL WAS ENCOUNTERED AT 365 FEET 48 INCHES
485 FEET 60 INCHES FEET INCHES
FEET INCHES FEET INCHES

Formation	Color	Hard or Soft	Top	Bottom	Oil Gas or Water	Depth Found	Remarks
Mud & Red Rock				60			
Lime			60	100			
Sand			100	135			
Lime & Slate			135	365			
Coal			365	369			
Lime			369	405			
Sand			405	425			
Slate & Sand			425	485			
Coal			485	490			
Slate			490	500			
Sand			500	525			
Slate			525	600			
Lime			600	650			
Sand			650	675			
Slate & Lime			675	760			
Sand			760	785			
Slate & Shells			785	952			
Sand			952	1000			
Lime & Slate			1000	1047			
Salt Sand			1047	1620			
					Water	1125-67	
					Water	1167	Hole Full
Slate			1620	1624			
Maxon Sand			1624	1660			
Slate			1660	1685			
Little Lime			1685	1728			
Pencil Cave			1728	1735			
Big Lime			1735	1880			
Big Injun Sand			1880	1910			
Slate Red Rock & Slate			1910	2010			
Squaw Sand			2010	2030			
					Gas & Oil	2012	
					Gas & Oil	2027	
Total Depth				2030			



Cont'd.

MAY 21 1913

Formation	Color	Hard or Soft	Top	Bottom	Oil, Gas or Water	Depth Found	Remarks	
Cont'd.								
DRILLED DEEPER.			Commenced March 4, 1914. Completed March 13, 1914.					
Slate & Shells			2030	2150				
Weir Sand			2150	2173				
					Oil & Gas	2171-73		
Total Depth				2176				
<u>SHOT RECORD.</u>								
			4-1-13	30 Qt.	Squaw			
			3-19-14	20 Qt.	Weir			
			3-1-16	40 Qt.	Squaw			
			12-21-20	60 Qt.	Weir			
			12-30-20	60 Qt.	Squaw			

Date March 7, 1939

APPROVED SOUTH PENN OIL COMPANY, Owner

By Elton Young Land Agent
(Title)