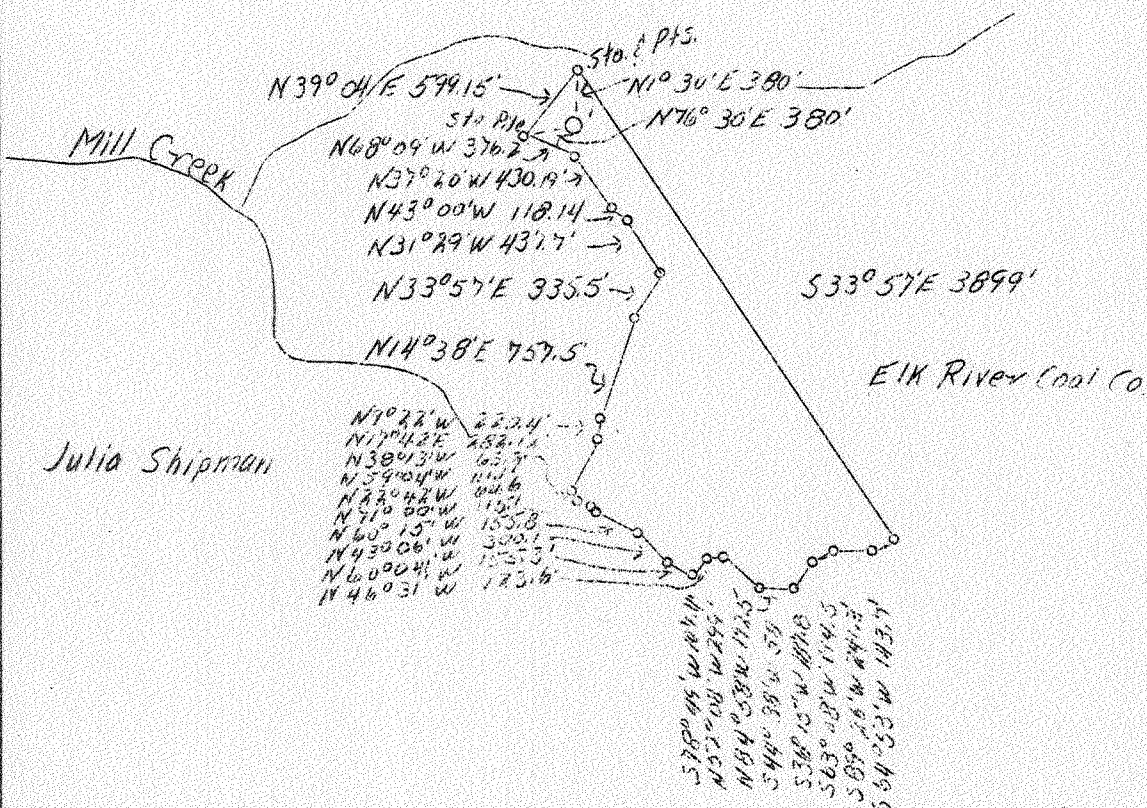


LATITUDE 38° 25'

LONGITUDE 81° 30'



W.D. Lewis



Julia Shipman

James Hunter

0.8 W  
233 A

ABD. Plugging #1 APR - 2 1939

Company Reichard & Craig  
 Adress 204 Davidson Bldg.  
 Charleston, W.Va.  
 Farm Ruth E. Mason  
 Acres 73 1/2  
 Well (Farm) No. 1  
 PL (S. L.) 999.23  
 Quadrangle Charleston N.E.  
 County Kanawha  
 District Elk  
 Eng. Chalres Sturm  
 Eng. Reg. No. 975  
 Date 3/18/39  
 Scale 1" = 1320'

STATE OF WEST VIRGINIA  
 Department of Mines  
 OIL AND GAS DIVISION  
 Charleston

WELL LOCATION MAP

File No. KAN-253-A



x Denotes location of well on U.S. Topographic Maps, scale 1 to 62,500, latitude and longitude lines being represented by border lines as shown.

- Denotes one inch spaces on border line of original tracing.