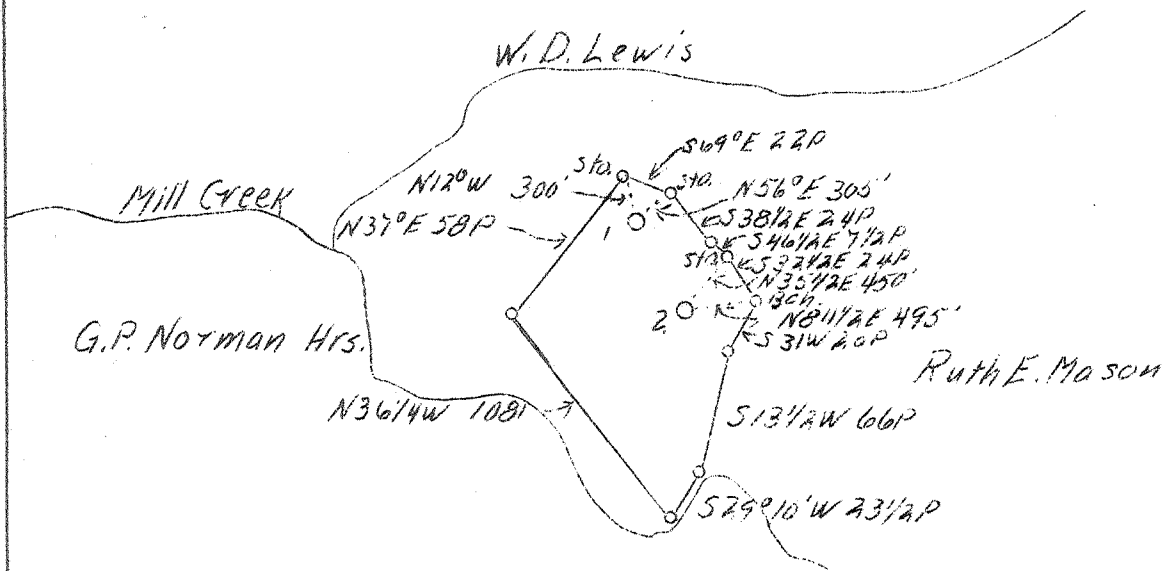


LATITUDE 38° 25'

LONGITUDE 81° 30'



Benj. S. Buckner

# 1

0192 W  
247 Q

# 2

0183 W  
255 Q

ABD.

Plugging #1 and #2 - 21939

Company Reichard & Craig  
 Address 204 Davidson Bldg.,  
 Charleston, W. Va.  
 Farm Julia Shipman  
 Acres 55  
 Well (Farm) No. 1 and 2  
 Elevation (SL) #1-971.87 - #2-958.56  
 Quadrangle Charleston, N. E.  
 County Kanawha  
 District Elk  
 Engineer Charles Sturm  
 Eng. Reg. No. 975  
 Date March 18, 1939  
 Scale 1" - 1320'

STATE OF WEST VIRGINIA  
 Department of Mines  
 OIL & GAS DIVISION  
 Charleston

WELL LOCATION MAP

File No. KAN-254-255-A

x Denotes location of well on U. S. Topographic Maps, scale 1 to 62,500, latitude and longitude lines being represented by border lines as shown.

- Denotes one inch spaces on border line of original tracing.