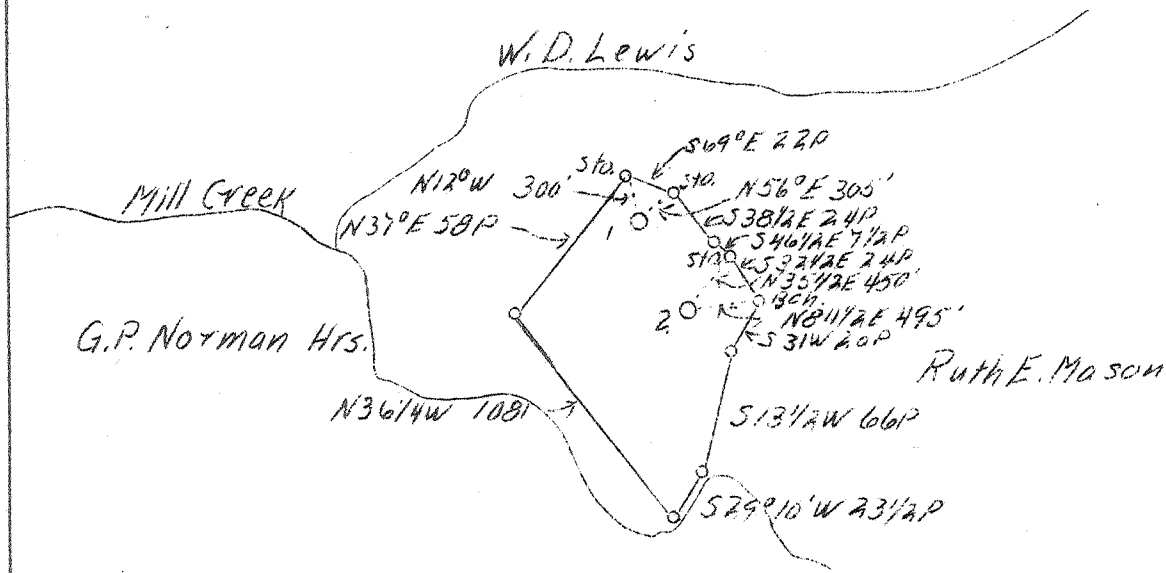


LATITUDE 38° 25'

LONGITUDE 81° 30'



Benj. S. Buckner

1

0.92 W
2.47 Q

2

0.83 W
2.55 Q

ABD.

Plugging #1 and #2 - 21939

Company Reichard & Craig
 Address 204 Davidson Bldg.,
 Charleston, W. Va.
 Farm Julia Shipman
 Acres 55
 Well (Farm) No. 1 and 2
 Elevation (SL) #1-971.87 - #2-958.56
 Quadrangle Charleston, N. E.
 County Kanawha
 District Elk
 Engineer Charles Sturm
 Eng. Reg. No. 975
 Date March 18, 1939
 Scale 1" = 1320'

STATE OF WEST VIRGINIA
 Department of Mines
 OIL & GAS DIVISION
 Charleston

WELL LOCATION MAP

File No. KAN-254-255-A

x Denotes location of well on U. S. Topographic Maps, scale 1 to 62,500, latitude and longitude lines being represented by border lines as shown.

- Denotes one inch spaces on border line of original tracing.