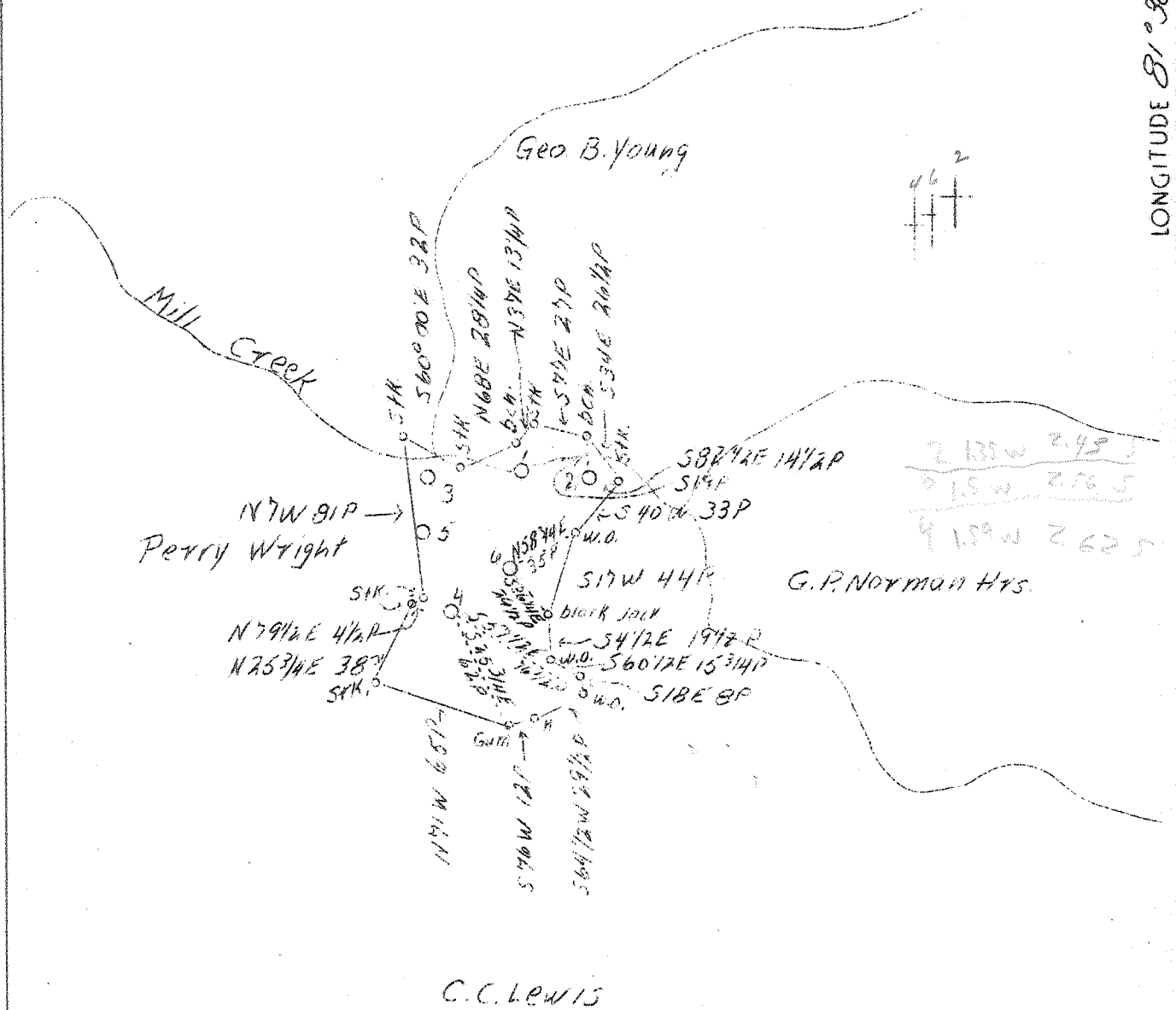


LATITUDE 38° 25'

LONGITUDE 81° 30'



ABD. PLUGGING #2, #4 and #6

Company	Reichard & Craig	STATE OF WEST OF VIRGINIA
Address	204 Davidson Bldg. Charleston, W.Va.	Department of Mines
Farm	James A. Vickers	OIL AND GAS DIVISION
Acres	64	Charleston
Well(Farm)No.	2, 4 & 6	WELL LOCATION MAP
El.(Sp. L.)	807, 966, 767	File No. <u>Map 256,768-A</u>
Quadrangle	Charleston N.W.	x Denotes location of well on U.S. Topo- graphic Maps, scale 1 to 62,500, latitude and longitude lines being represented by border lines as shown.
County	Kanawha	- Denotes one inch spaces on border line of original tracing.
District	Elk	
Eng.	Charles Sturm	
Eng. Reg. No.	975	
Date	3/16/39	
Scale	1" = 1320	