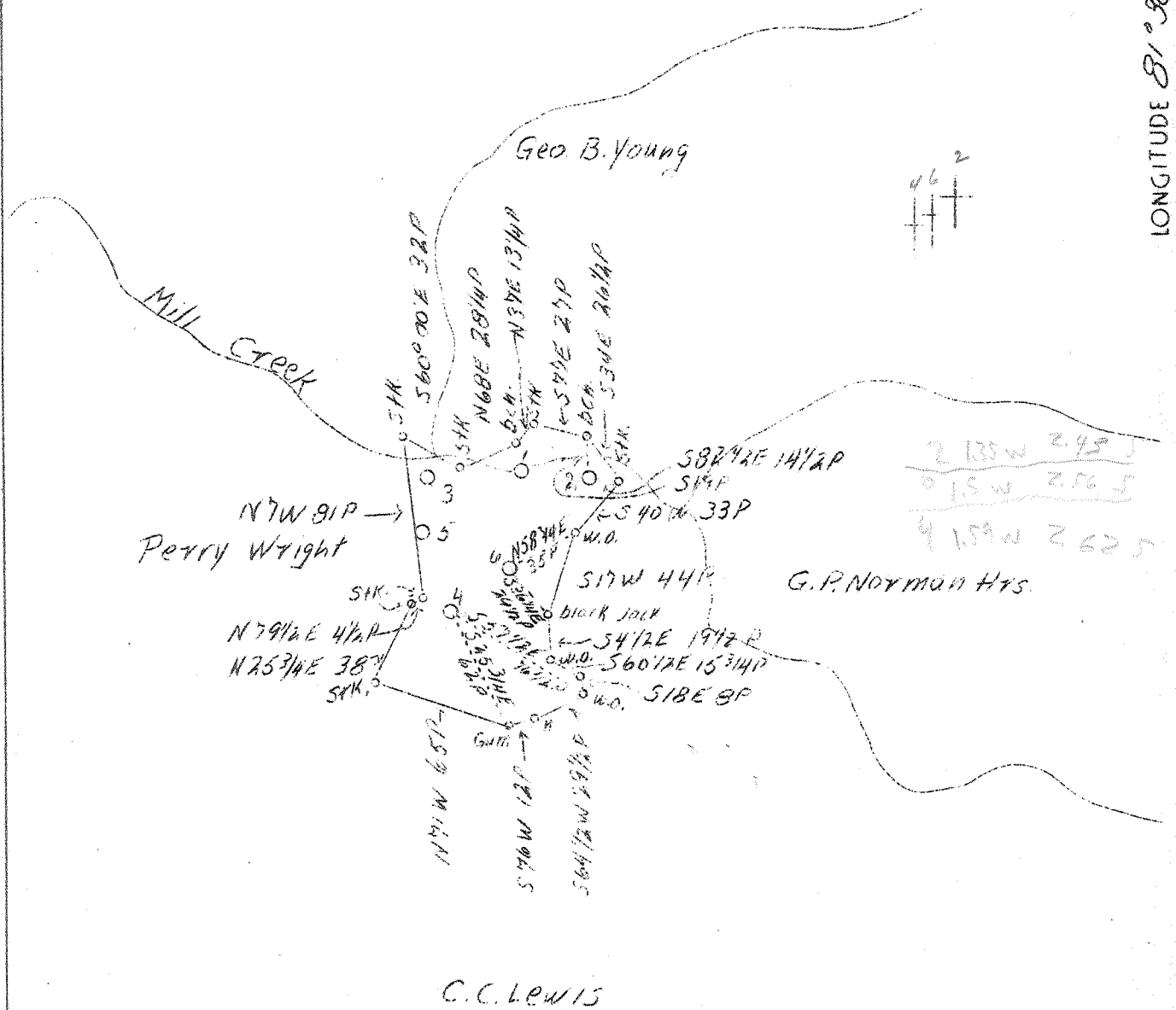


LATITUDE 38° 25'

LONGITUDE 81° 30'



ABD. PLUGGING #2, #4 and #6

Company Reichard & Craig  
 Address 204 Davidson Bldg.  
 Charleston, W.Va.  
 Farm James A. Vickers  
 Acres 64  
 Well(Farm)No. 2, 4 & 6  
 El.(Sp. L.) 807, 966, 767  
 Quadrangle Charleston N.W.  
 County Kanawha  
 District Elk  
 Eng. Charles Sturm  
 Eng. Reg. No. 975  
 Date 3/16/39  
 Scale 1" - 1320

STATE OF WEST OF VIRGINIA  
 Department of Mines  
 OIL AND GAS DIVISION  
 Charleston

WELL LOCATION MAP

File No. Map 256, 7 & B - A

x Denotes location of well on U.S. Topographic Maps, scale 1 to 62,500, latitude and longitude lines being represented by border lines as shown.

- Denotes one inch spaces on border line of original tracing.