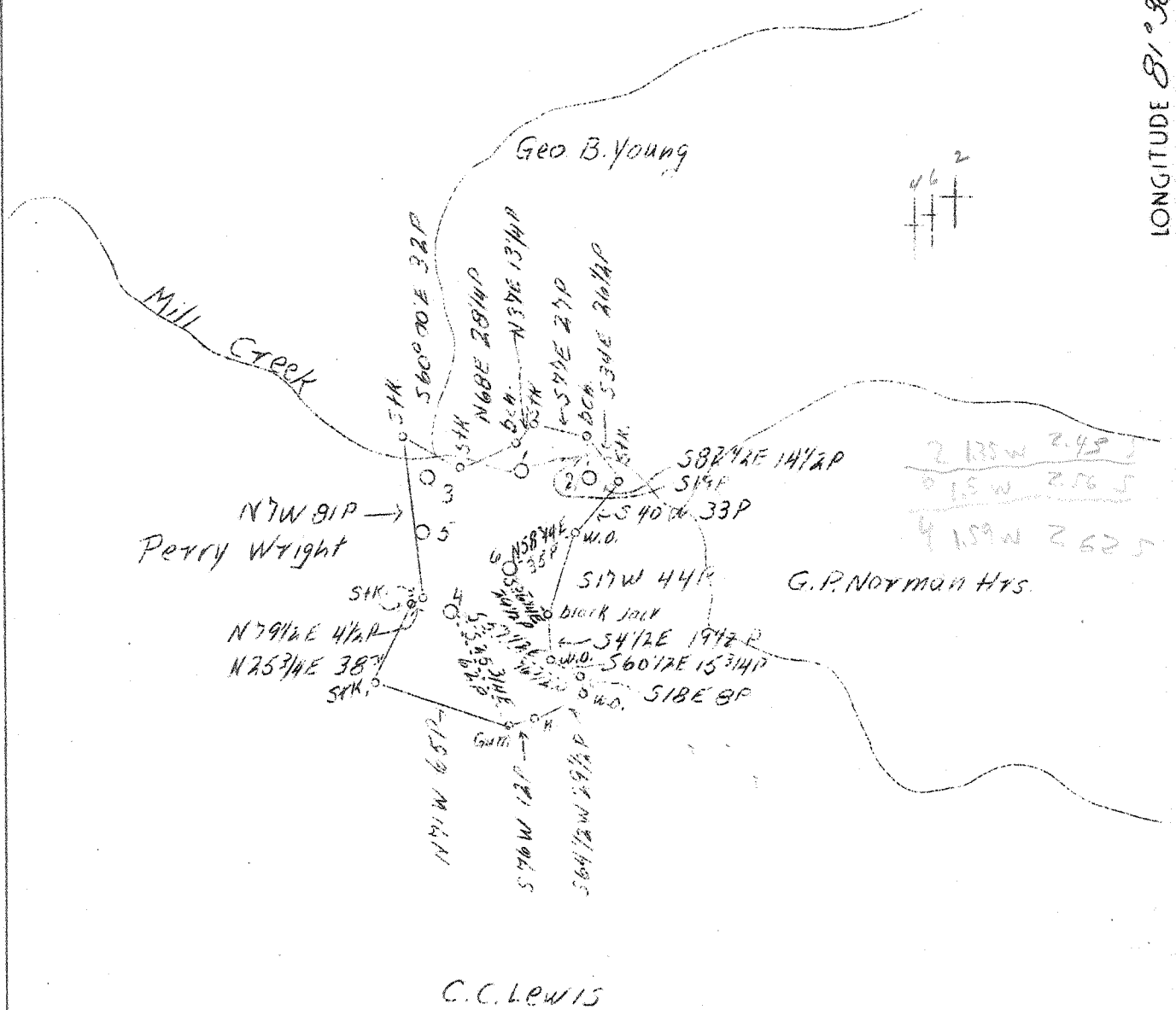


LATITUDE 38° 25'

LONGITUDE 81° 30'



ABD. PLUGGING #2, #4 and #6

Company Reichard & Craig
 Address 204 Davidson Bldg.
 Charleston, W.Va.
 Farm James A. Vickers
 Acres 64
 Well(Farm)No. 2, 4 & 6
 El.(Sp. L.) 807, 966, 767
 Quadrangle Charleston N.W.
 County Kanawha
 District Elk
 Eng. Charles Sturm
 Eng. Reg. No. 975
 Date 3/16/39
 Scale 1" - 1320

STATE OF WEST OF VIRGINIA
 Department of Mines
 OIL AND GAS DIVISION
 Charleston

WELL LOCATION MAP

File No. Map 256,748-A

x Denotes location of well on U.S. Topographic Maps, scale 1 to 62,500, latitude and longitude lines being represented by border lines as shown.

- Denotes one inch spaces on border line of original tracing.