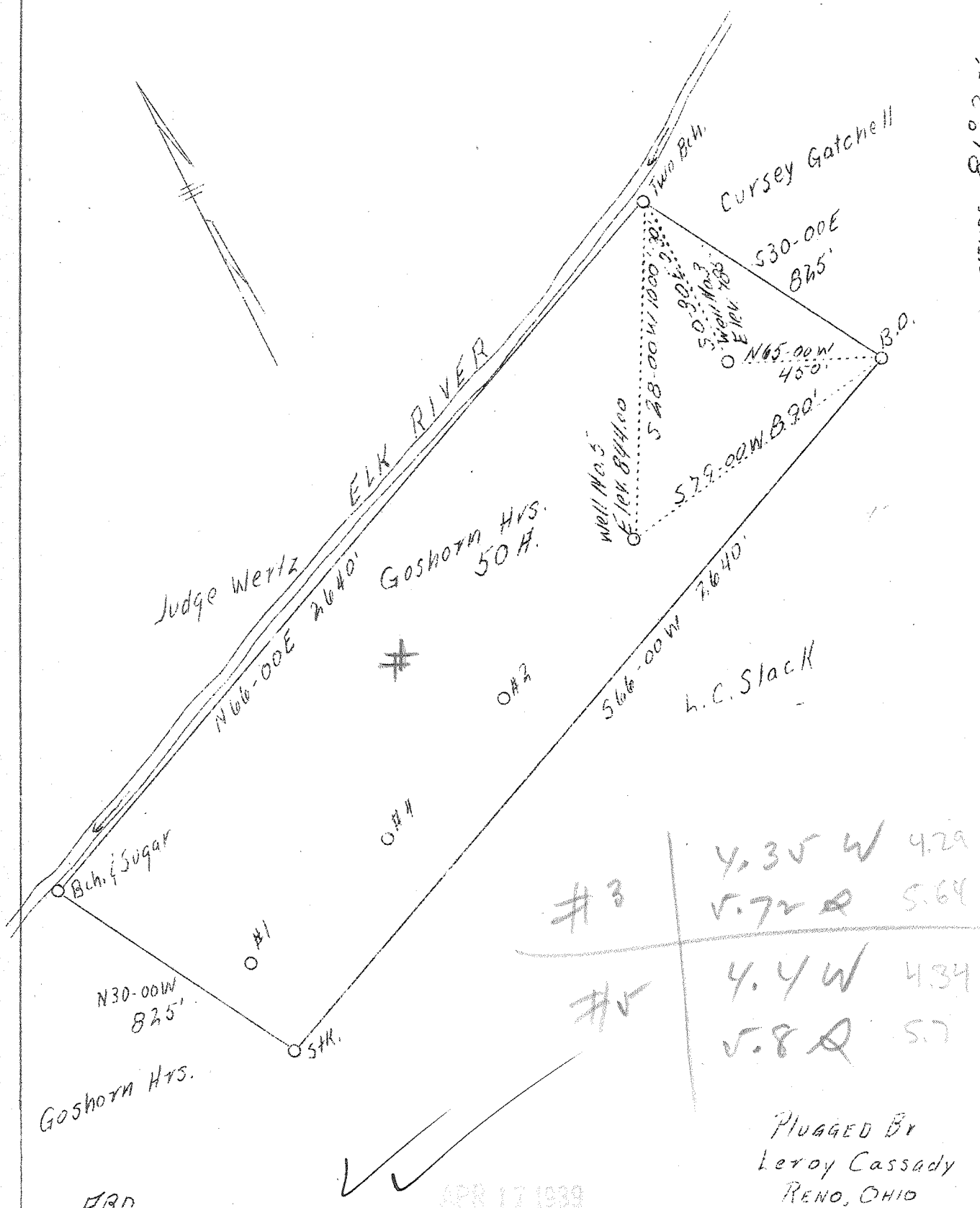


LATITUDE 38° 30'

LONGITUDE 81° 25'



Company	Roane County Oil Co.	STATE OF WEST VIRGINIA
Address	Parkersburg, W. Va.	Department of Mines
Farm	Goshorn Hrs.	OIL AND GAS DIVISION
Tract	50	CHARLESTON
Well (Farm) No.	23-5	WELL LOCATION MAP
Elevation	SL #3--785	File No. <u>Kan-2,59-260-A</u>
	#5--844	x Denotes location of well on United States Topographic Maps, scale 1 to 62,500, latitude and longitude lines being represented by border lines as shown.
Quadrangle	Clendenin	-Denotes one inch spaces on border line of original tracing.
County	Kanawha	
District	Elk	
Engineer	L.F. Dye	
Engineer's Reg. #	804	
Date	Apr. 4, 1939	
Scale	1"=400'	