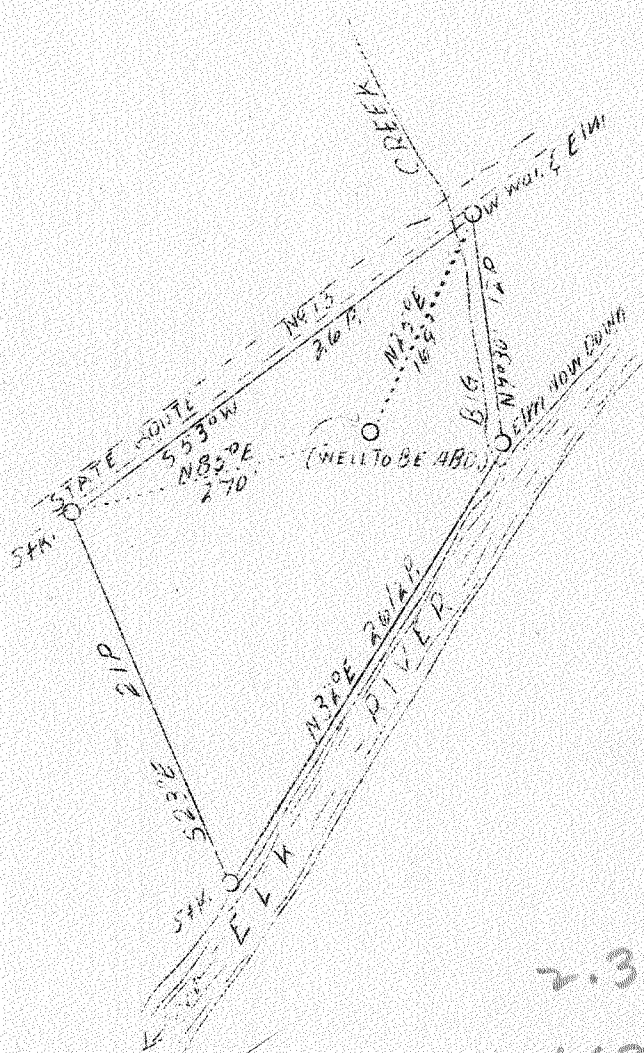


LATITUDE 38°30'

LONGITUDE 81°40'



2.31 W
1.68 Q

APR 10 1939

ABD.

Company	Osborne & Parris Drilling Co.
Address	Clendenin, W. Va.
Farm	B. A. White
Acres	2-1/2
Well (Farm) No.	1
Elevation (SL)	628
Quadrangle	Clendenin
County	Kanawha
District	Big Sandy
Engineer	A. E. Price
Eng. Reg. No.	819
Date	March 22, 1939
Scale	1" = 165' = 10 poles

NC

STATE OF WEST VIRGINIA
 Department of Mines
 OIL & GAS DIVISION
 Charleston

WELL LOCATION MAP

File No. Kan-261-A

x Denotes location of well on U. S. Topographic Maps, scale 1 to 62,500, latitude and longitude lines being represented by border lines as shown.

- Denotes one inch spaces on border line of original tracing.