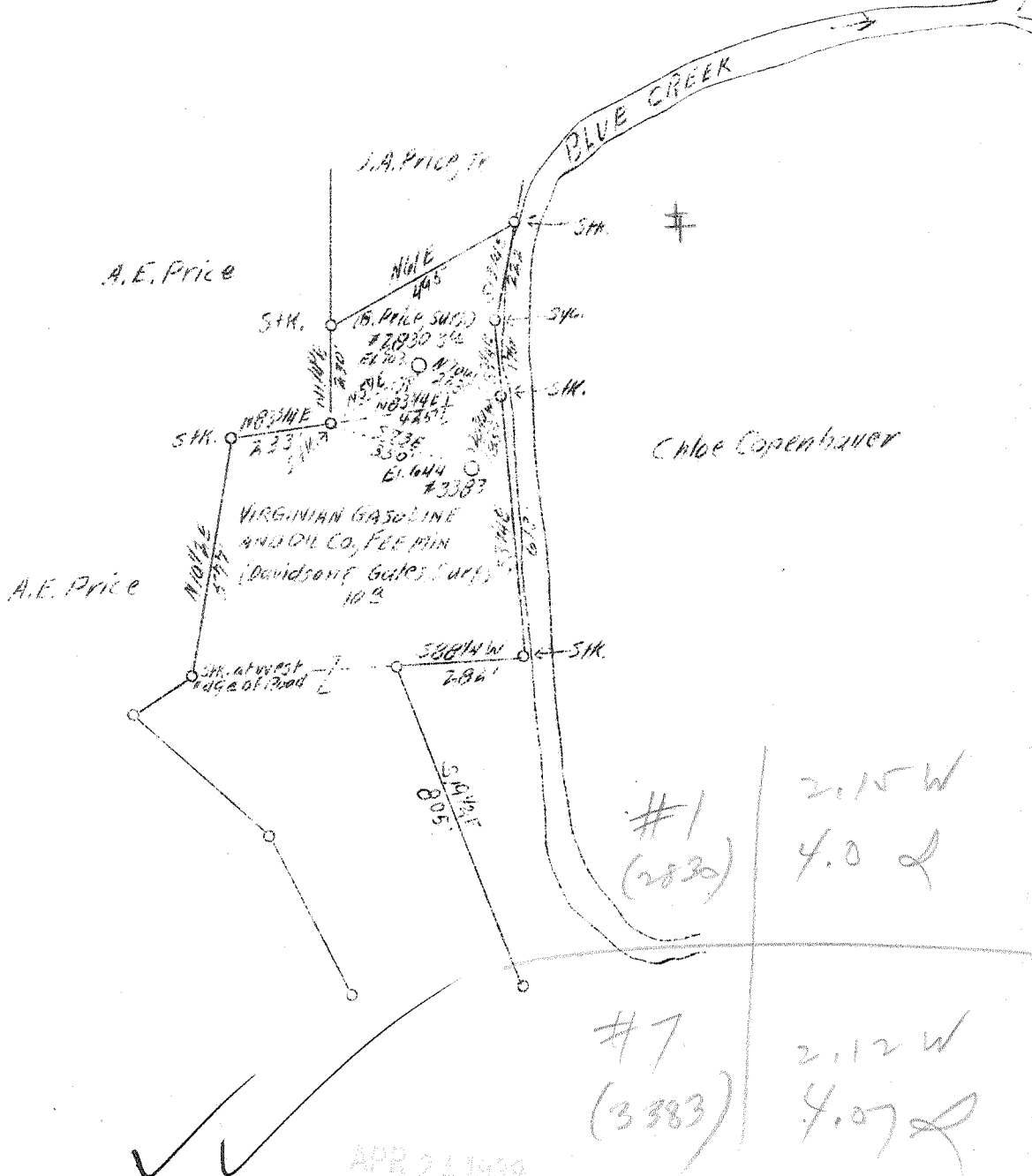


LATITUDE 38° 30'

LONGITUDE 81° 25'

Note - No top available for well
#3383 well used by SWM
#2876 is right for a part
of WPH R 3393

#2876
EPA. IAKO



#1 (2830)	2.15 W 4.0 L
#7 (3383)	2.12 W 4.07 L

Company Virginia Gasoline & Oil Co.
 Address Charleston, W.Va.
 Farm Virginia Gasoline & Oil Co. Fee
 Acres 3/10
 Lease No. 27467 27464
 Well(Farm) 1 & 7
 Serial No. 2830 & 3383
 El.(S. L.) As Shown
 Quadrangle Clenden
 County Kanawha
 District Elk
 Eng. G.A.Cunningham
 Eng. Reg. No. 659
 File No. 70 - 65
 Date 4/14/39
 Scale 1" - 400'

STATE OF WEST VIRGINIA
 Department of Mines
 OIL AND GAS DIVISION
 Charleston

WELL LOCATION MAP

File No. WPH. 262-263-A

x Denotes location of well on U.S. Topographic Maps, scale 1 to 62,500, latitude and longitude lines being represented by border lines as shown.

- Denotes one inch spaces on border line of original tracing.

STATE OF WEST VIRGINIA
DEPARTMENT OF MINES
OIL AND GAS DIVISION

740

WELL RECORD

Hermit No. 762-A

Oil or Gas Well Oil
(Kind)

Company	Virginian Gasoline & Oil Co.	Casing and Tubing	Used in Drilling	Left in Well	Packers
Address	Charleston, West Va.	Size			
Farm	Berthens Price Acres 3	16			Kind of Packer
Location (waters)	Blue Creek	13			
Well No.	2830 Elev. 703.0	10	42	42	Size of
District	Elk County Kanawha	8 1/4	505	---	
The surface of tract is owned in fee by	Berthens Price	6 5/8	1505	1505	Depth set
Address	Blue Creek, W.Va.	5 3/16			
Mineral rights are owned by	Virginian Gasoline & Oil Co.	3			Perf. top
Address	Charleston, W.Va.	2			Perf. bottom
Drilling commenced	March 6, 1912	Liners Used			Perf. top
Drilling completed	April 5, 1912				Perf. bottom
Date shot	Depth of shot				
Open Flow	/10ths Water in				
	/10ths Merc. in				
Volume	Cu. Ft.				
Rock Pressure	lbs. hrs.				
Oil	72 bbls., 1st 24 hrs.				
Fresh water	feet				
Salt water	feet				

CASING CEMENTED	SIZE	No. FT.	Date
COAL WAS ENCOUNTERED AT	165 FEET	60 INCHES	
	255 FEET	60 INCHES	

Formation	Color	Hard or Soft	Top	Bottom	Oil Gas or Water	Depth Found	Remarks
Clay & Shale				10			
Sand			10	165	Oil @ 825'		
Coal			165	170			
Slate & Shells			170	255			
Coal			255	260			
Slate & Shell			260	390			
Sand			390	415			
Slate & Shell			415	475			
Sand			475	530			
Slate & Shell			530	800			
Salt Sand			800	1316			
Slate & Shell			1316	1320			
Red Rock			1320	1322			
Slate & Shell			1322	1468			
Little Lime			1468	1480			
Pencil Cave			1480	1485			
Big Lime			1485	1645			
Slate & Shell			1645	1690			
Sand			1690	1715			
Black Shale			1715	1742			
Oil Sand			1742	1762			
Total Depth				1762			



AY 21 1939

Formation	Color	Hard or Soft	Top	Bottom	Oil, Gas or Water	Depth Found	Remarks

Date April 17, 1939

APPROVED VIRGINIAN GASOLINE & OIL, Owner

By *L. G. Cunningham* (Title)

