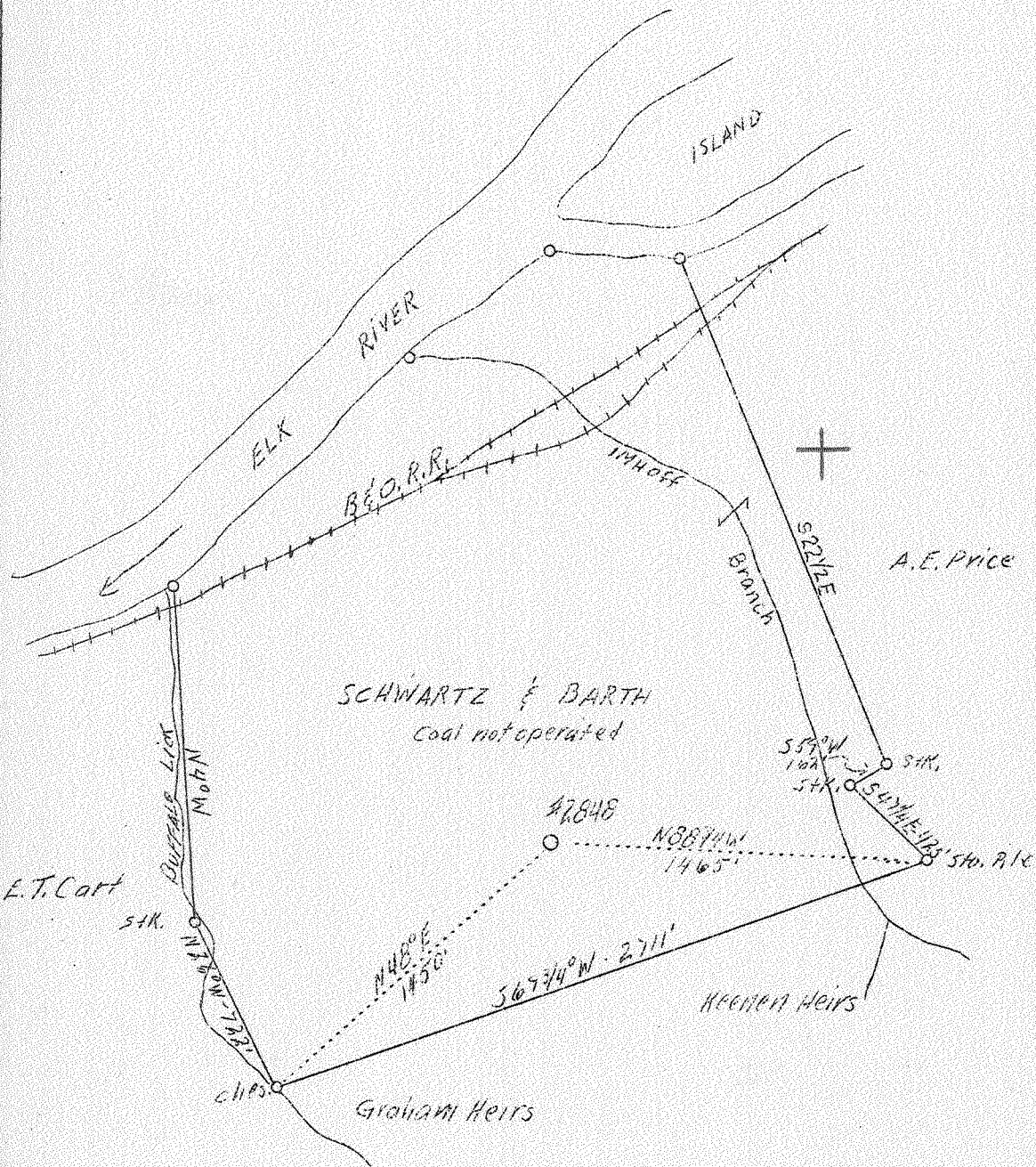


LATITUDE 38° 30'

LONGITUDE 81° 25'



2147 W  
4.18 Q

✓ MAY 26 1939

Company Virginian Gasoline & Oil Co.  
 Address Charleston, W. Va.  
 Farm Schwartz & Barth  
 Acres 100  
 Lease No. 780  
 Well (Farm) No. 7  
 Section No. 2848  
 Elevation 825 (Barometer)  
 Quadrangle Clendenin  
 County Kanawha  
 District Elk  
 Engineer G. A. Cunningham  
 Eng. Reg. No. 659  
 File No. 70-65  
 Date April 27, 1939  
 Scale 1" = 660'

STATE OF WEST VIRGINIA  
 Department of Mines  
 OIL & GAS DIVISION  
 Charleston

WELL LOCATION MAP

File No. Kan-264-A

x Denotes location of well on U. S. Topographic Maps, scale 1 to 62,500, latitude and longitude lines being represented by border lines as shown.

- Denotes one inch spaces on border line of original tracing.

STATE OF WEST VIRGINIA  
DEPARTMENT OF MINES  
OIL AND GAS DIVISION

743

WELL RECORD

Permit No. 264-A

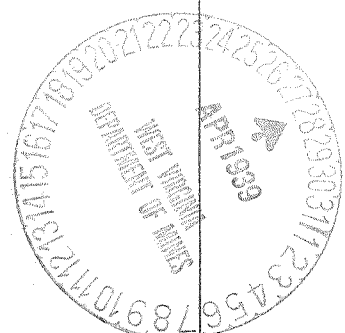
Oil or Gas Well Oil  
(Kind)

Company Virginian Gasoline & Oil Co.  
Address Charleston, W. Va.  
Farm Schwartz & Barth Acres 100  
Location (waters) Imhoff Br. of Elk River  
Well No. 2848 Elev. 825'  
District Elk County Kanawha  
The surface of tract is owned in fee by Barbara Schwartz et al  
Address Charleston, W. Va.  
Mineral rights are owned by Same  
Address \_\_\_\_\_  
Drilling commenced March 6, 1912  
Drilling completed April 15, 1912  
Date shot \_\_\_\_\_ Depth of shot 1850  
Open Flow /10ths Water in \_\_\_\_\_ Inch  
/10ths Merc. in \_\_\_\_\_ Inch  
Volume \_\_\_\_\_ Cu. Ft.  
Rock Pressure \_\_\_\_\_ lbs. \_\_\_\_\_ hrs.  
Oil 75 bbls., 1st 24 hrs.  
Fresh water \_\_\_\_\_ feet \_\_\_\_\_ feet  
Salt water \_\_\_\_\_ feet \_\_\_\_\_ feet

Casing and Tubing	Used in Drilling	Left in Well	Packers
Size			
16.			Kind of Packer
13.			
10	60	60	Size of
8 1/4	595	---	
6 5/8	1608	1608	Depth set
5 3/16			
3.			Perf. top
2.			Perf. bottom
Liners Used			Perf. top
			Perf. bottom

CASING CEMENTED \_\_\_\_\_ SIZE \_\_\_\_\_ No. FT. \_\_\_\_\_ Date \_\_\_\_\_  
COAL WAS ENCOUNTERED AT 409 FEET 60 INCHES  
\_\_\_\_\_ FEET \_\_\_\_\_ INCHES \_\_\_\_\_ FEET \_\_\_\_\_ INCHES  
\_\_\_\_\_ FEET \_\_\_\_\_ INCHES \_\_\_\_\_ FEET \_\_\_\_\_ INCHES

Formation	Color	Hard or Soft	Top	Bottom	Oil Gas or Water	Depth Found	Remarks
Clay & Shale				50			
Sand			50	109			
Slate			109	194			
Sand			194	299			
Slate & Lime Shell			299	409			
Coal			409	414			
Slate & Sand Shell			414	544			
Hard Lime			544	559			
Slate & Sand Shell			559	914			
Salt Sand			914	1389			
Slate & Shell			1389	1524			
Little Lime			1524	1549			
Pencil Cave			1549	1559			
Gray Lime			1559	1569			
Broken			1569	1594			
Lime			1594	1598			
Broken			1598	1604			
Big Lime			1604	1779			
Blue Slate			1779	1789			
Red Rock			1789	1807			
Sand			1807	1817			
Black Shale			1817	1850			
Oil Sand			1850	1870			
Total Depth			1879'				



Formation	Color	Hard or Soft	Top	Bottom	Oil, Gas or Water	Depth Found	Remarks

Date April 27, 19 39

APPROVED VIRGINIAN GASOLINE & OIL CO., Owner

By G.A. Cunningham  
(Title)